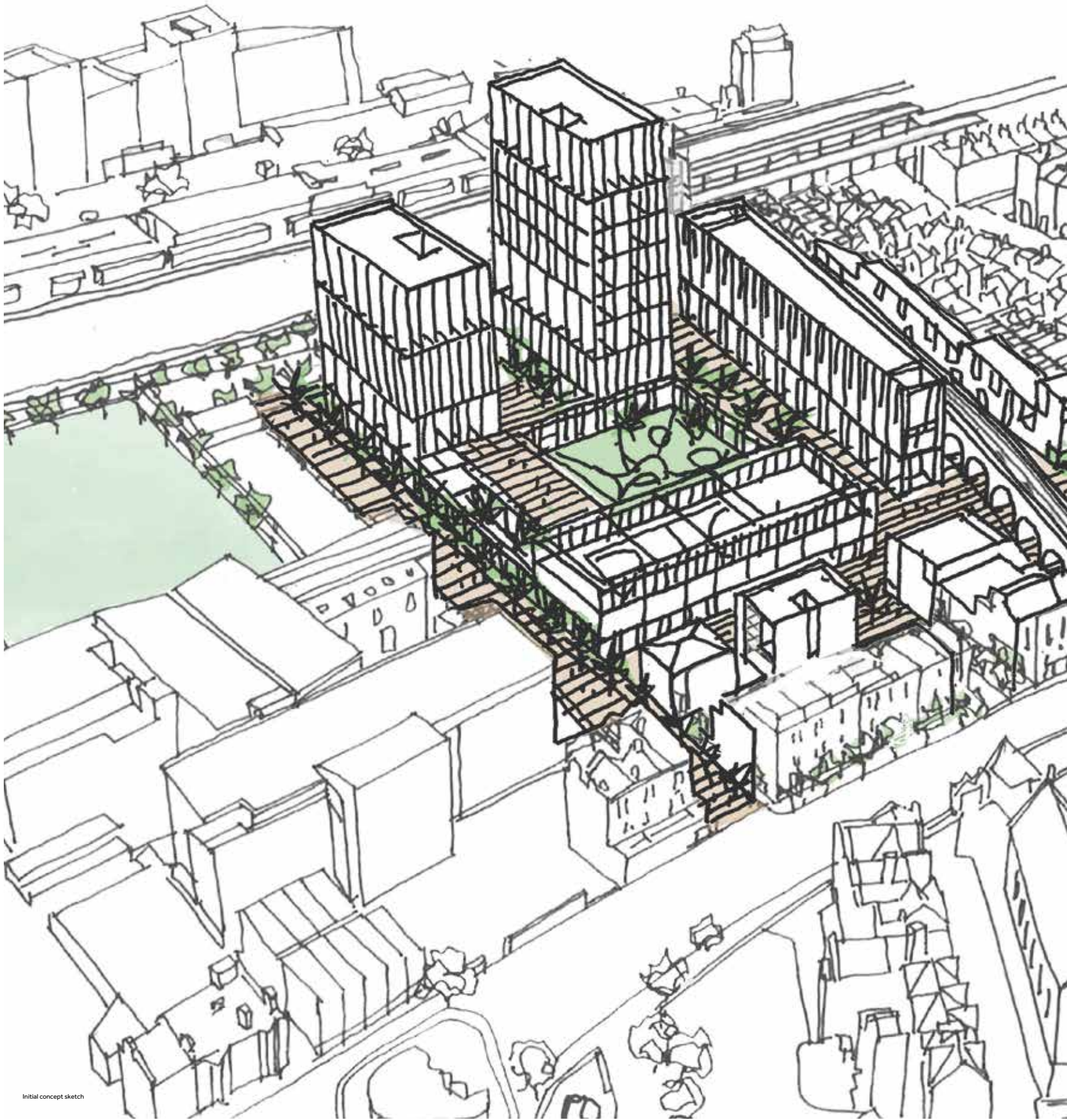




PORTFOLIO

BATTERSEA EXCHANGE



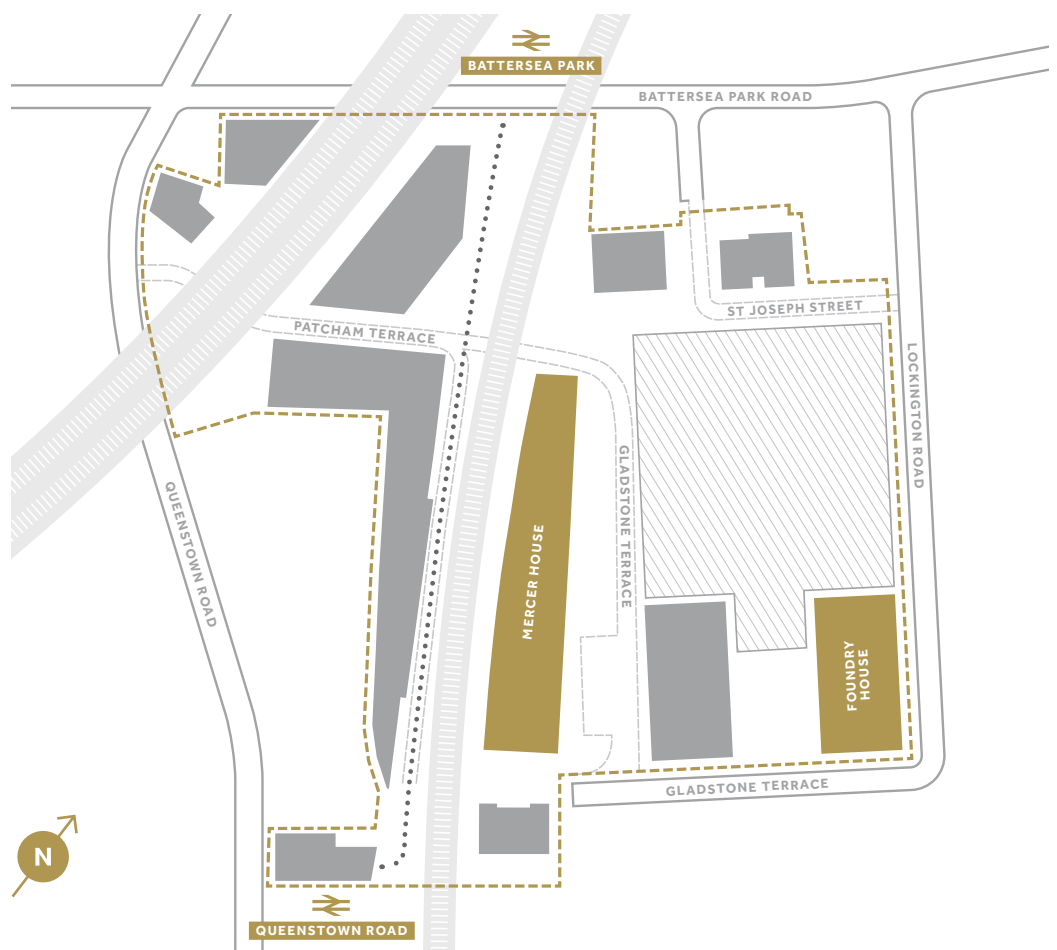
Initial concept sketch

A FRESH PERSPECTIVE

CONVENIENTLY CLOSE TO THE CENTRE OF THE CAPITAL, THIS NEW AND LIVELY HUB IS AT THE HEART OF BATTERSEA, A NEIGHBOURHOOD WHOSE DISTINCTIVE CHARACTER AND IDENTITY HAS DEEPENED OVER THE YEARS.

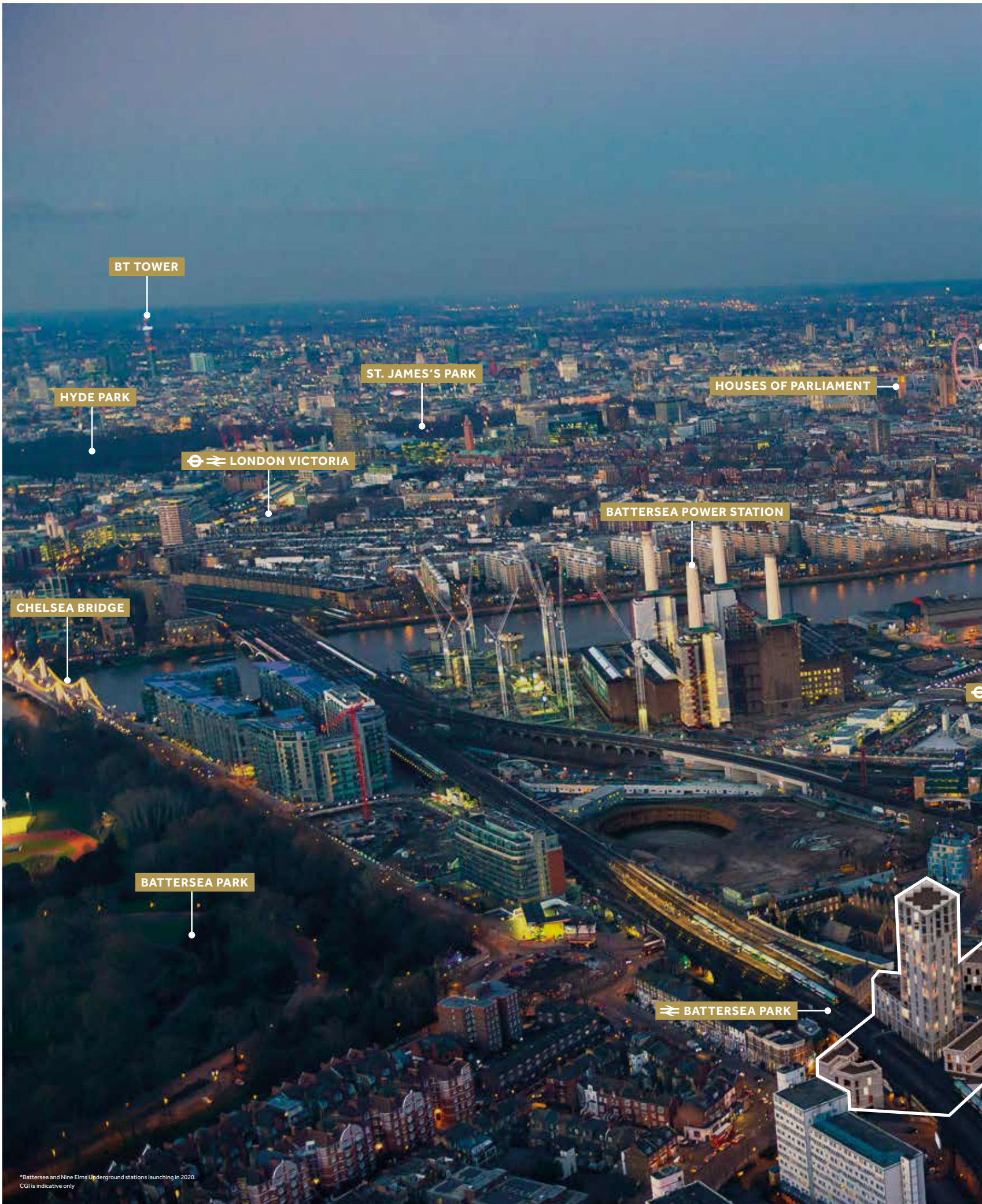
Battersea Exchange provides a unique collection of homes that reflect this identity and heritage.

It breathes exciting new life into the area and creates a genuinely mixed-use quarter where contemporary homes sit alongside new public spaces, shops and discreet office space. Here, superb transport links and a beautiful setting combine with countless exceptional opportunities for growth. The perfect balance of heritage and modernity – that's Battersea Exchange.



- Current Phases
- Future Phases
- ▨ Railway Line
- - - Site Boundary
- ⊘ St. Mary's Primary School
- ⋯ Pedestrian Walkway Connecting Stations

BATTERSEA EXCHANGE



*Battersea and Nine Elms Underground stations launching in 2020.
CGIs indicative only



BATTERSEA EXCHANGE





THE FUTURE OF LIVING

BATTERSEA EXCHANGE SITS WITHIN THE NINE ELMS AREA: A NEW AND VIBRANT CULTURAL DISTRICT ON LONDON'S SOUTH BANK. THIS 42-ACRE, £15 BILLION PROJECT IS ARGUABLY THE MOST AMBITIOUS, TRANSFORMATIVE REGENERATION PROJECT LONDON HAS SEEN IN DECADES.

The proposed Nine Elms on the South Bank regeneration area will become a vibrant new centre for business and culture in the capital – with two new tube stations, 18,000 new homes, 6.5 million square feet of commercial space and a new linear park between Battersea Power Station and Vauxhall.

Battersea Power Station is one of London's most iconic landmarks, and the proud cornerstone of the Nine Elms district. When its proposed redevelopment is complete, it will be home to dozens of shops, restaurants and venues. Nine Elms will also be home to the new American and Dutch embassies, and the expanded New Covent Garden Market: the largest produce and flower market in the UK.

As your gateway to Nine Elms, Battersea Exchange will be home to a flourishing London community, integrated within the surrounding historic neighbourhood. Meticulously planned and beautifully designed, the development's architecture and mixed-use public spaces are created to encompass living, shopping, work, school and leisure.

BATTERSEA EXCHANGE



CGIs indicative only

FLOOR N^o 00



MAISONETTE 58

TOTAL INTERNAL AREA 87.83 sqm / 945.39 sqft

KITCHEN	12.8 sqm (137.8 sqft)	4985 X 2600 mm
LIVING ROOM	18.0 sqm (193.8 sqft)	4985 X 3465 mm
GARDEN	7.05 sqm (75.9 sqft)	4735 X 1500 mm
GARDEN	14.8 sqm (159.3 sqft)	8850 X 1665 mm

MAISONETTE 59

TOTAL INTERNAL AREA 108.68 sqm / 1169.82 sqft

KITCHEN	12.7 sqm (136.7 sqft)	4800 X 2680 mm
LIVING ROOM	16.0 sqm (172.2 sqft)	4800 X 3445 mm
BEDROOM TWO	12.5 sqm (134.5 sqft)	3510 X 3550 mm
GARDEN	14.02 sqm (150.91 sqft)	9350 X 1500 mm

MAISONETTE 60

TOTAL INTERNAL AREA 89.06 sqm / 958.63 sqft

KITCHEN	11.9 sqm (128.1 sqft)	4985 X 2460 mm
LIVING ROOM	18.2 sqm (195.9 sqft)	4985 X 3675 mm
GARDEN	10.89 sqm (117.22 sqft)	7325 X 1500 mm

MAISONETTE 61

TOTAL INTERNAL AREA 88.86 sqm / 956.48 sqft

KITCHEN	11.9 sqm (128.1 sqft)	4985 X 2460 mm
LIVING ROOM	18.1 sqm (194.8 sqft)	4985 X 3675 mm
GARDEN	9.3 sqm (100.1 sqft)	7325 X 1500 mm

MAISONETTE 62

TOTAL INTERNAL AREA 88.86 sqm / 956.48 sqft

KITCHEN	11.9 sqm (128.1 sqft)	4985 X 2460 mm
LIVING ROOM	18.2 sqm (195.9 sqft)	4985 X 3675 mm
GARDEN	9.80 sqm (105.49 sqft)	6535 X 1500 mm

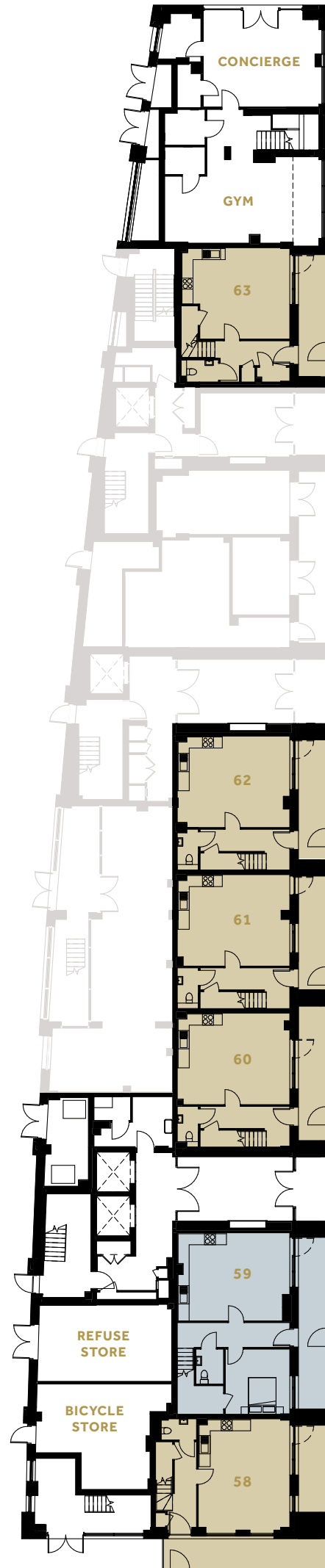
MAISONETTE 63

TOTAL INTERNAL AREA 86.51 sqm / 931.19 sqft

KITCHEN	9.9 sqm (106.6 sqft)	4980 X 2400 mm
LIVING ROOM	17.5 sqm (188.4 sqft)	4980 X 3515 mm
GARDEN	9.97 sqm (107.32 sqft)	6650 X 1500 mm



- 2 Bedroom Maisonette
- 3 Bedroom Maisonette



For terms and conditions please see page 50.
Total internal areas exclude gardens, balconies, terraces and winter gardens.

FLOOR N^o 01



MAISONETTE 58

MASTER BEDROOM	11.3 sqm (121.6 sqft)	3940 X 2750 mm
EN SUITE	2.6 sqm (28.0 sqft)	1685 X 1550 mm
BEDROOM TWO	11.7 sqm (125.9 sqft)	3465 X 2795 mm
BATHROOM	4.1 sqm (44.1 sqft)	2115 X 2030 mm

MAISONETTE 59

MASTER BEDROOM	13.5 sqm (145.3 sqft)	4080 X 3390 mm
EN SUITE	2.7 sqm (29.1 sqft)	2100 X 1400 mm
BEDROOM THREE	12.1 sqm (130.2 sqft)	4080 X 2970 mm
BATHROOM	4.1 sqm (44.1 sqft)	2115 X 2030 mm

MAISONETTE 60

MASTER BEDROOM	13.7 sqm (147.5 sqft)	3770 X 2780 mm
EN SUITE	2.9 sqm (31.2 sqft)	2260 X 1400 mm
BEDROOM TWO	11.3 sqm (121.6 sqft)	4425 X 2855 mm
BATHROOM	4.2 sqm (45.2 sqft)	2150 X 2030 mm

MAISONETTE 61

MASTER BEDROOM	13.5 sqm (145.3 sqft)	3770 X 2780 mm
EN SUITE	2.9 sqm (31.2 sqft)	2260 X 1400 mm
BEDROOM TWO	11.4 sqm (122.7 sqft)	4425 X 2855 mm
BATHROOM	4.2 sqm (45.2 sqft)	2150 X 2030 mm

MAISONETTE 62

MASTER BEDROOM	13.7 sqm (147.5 sqft)	3770 X 2780 mm
EN SUITE	2.9 sqm (31.2 sqft)	2260 X 1400 mm
BEDROOM TWO	11.3 sqm (121.6 sqft)	4425 X 2855 mm
BATHROOM	4.2 sqm (45.2 sqft)	2150 X 2030 mm

MAISONETTE 63

MASTER BEDROOM	13.8 sqm (148.5 sqft)	3925 X 3510 mm
EN SUITE	3.2 sqm (34.4 sqft)	2315 X 1200 mm
BEDROOM TWO	11.6 sqm (124.9 sqft)	3510 X 3300 mm
BATHROOM	4.8 sqm (51.7 sqft)	2310 X 2030 mm

STUDIO 64

TOTAL INTERNAL AREA	40.47 sqm / 435.62 sqft	
MASTER BEDROOM	11.4 sqm (122.7 sqft)	4440 X 2710 mm
BATHROOM	4.0 sqm (43.1 sqft)	2095 X 2030 mm
WINTER GARDEN	5.26 sqm (56.62 sqft)	3500 X 1395 mm



-  Studio
-  2 Bedroom Maisonette
-  3 Bedroom Maisonette
-  Affordable Housing

For terms and conditions please see page 50.
Total internal areas exclude gardens, balconies, terraces and winter gardens.

FLOOR NO 02



APARTMENT 65

TOTAL INTERNAL AREA 94.21 sqm / 1014.07 sqft

KITCHEN	18.6 sqm (200.2 sqft)	7800 X 2380 mm
LIVING ROOM	24.5 sqm (263.7 sqft)	6000 X 4095 mm
MASTER BEDROOM	14.6 sqm (157.2 sqft)	4755 X 3245 mm
EN SUITE	5.6 sqm (60.3 sqft)	2660 X 2155 mm
BEDROOM TWO	14.4 sqm (155.0 sqft)	4565 X 3140 mm
BATHROOM	4.3 sqm (46.3 sqft)	2245 X 2030 mm
WINTER GARDEN	5.3 sqm (57.05 sqft)	3270 X 1510 mm

APARTMENT 66

TOTAL INTERNAL AREA 58.27 sqm / 627.21 sqft

KITCHEN	11.7 sqm (125.9 sqft)	4500 X 2600 mm
LIVING ROOM	15.0 sqm (161.5 sqft)	4500 X 3395 mm
MASTER BEDROOM	14.3 sqm (153.9 sqft)	4195 X 3405 mm
BATHROOM	4.3 sqm (46.3 sqft)	2115 X 2060 mm
WINTER GARDEN	4.97 sqm (43.50 sqft)	1510 X 3160 mm

APARTMENT 67

TOTAL INTERNAL AREA 94.01 sqm / 1011.92 sqft

KITCHEN	12.5 sqm (134.5 sqft)	6245 X 2045 mm
LIVING ROOM	19.4 sqm (208.8 sqft)	4705 X 3755 mm
MASTER BEDROOM	14.9 sqm (160.4 sqft)	4665 X 3050 mm
EN SUITE	3.7 sqm (39.8 sqft)	2395 X 1650 mm
BEDROOM TWO	13.1 sqm (141.0 sqft)	5115 X 2990 mm
BEDROOM THREE	8.3 sqm (89.3 sqft)	3315 X 2520 mm
BATHROOM	5.2 sqm (56.0 sqft)	2840 X 2045 mm
WINTER GARDEN	8.88 sqm (95.58 sqft)	5410 X 1510 mm

APARTMENT 68

TOTAL INTERNAL AREA 75.26 sqm / 810.09 sqft

KITCHEN	7.8 sqm (84.0 sqft)	4225 X 1850 mm
LIVING ROOM	21.2 sqm (228.2 sqft)	5020 X 4225 mm
MASTER BEDROOM	13.2 sqm (142.1 sqft)	4250 X 3045 mm
EN SUITE	3.6 sqm (38.8 sqft)	2075 X 1800 mm
BEDROOM TWO	12.0 sqm (129.2 sqft)	3625 X 3370 mm
BATHROOM	4.1 sqm (44.1 sqft)	2115 X 2025 mm
BALCONY	11.52 sqm (124.0 sqft)	7430 X 1550 mm



- 1 Bedroom Apartment
- 2 Bedroom Apartment
- 3 Bedroom Apartment
- Affordable Housing

For terms and conditions please see page 50.
Total internal areas exclude gardens, balconies, terraces and winter gardens.

FLOOR NO 03



APARTMENT 69

TOTAL INTERNAL AREA 94.21 sqm / 1014.07 sqft

KITCHEN	18.6 sqm (200.2 sqft)	7800 X 2380 mm
LIVING ROOM	24.5 sqm (263.7 sqft)	6000 X 4095 mm
MASTER BEDROOM	14.6 sqm (157.2 sqft)	4755 X 3245 mm
EN SUITE	5.6 sqm (60.3 sqft)	2660 X 2155 mm
BEDROOM TWO	14.4 sqm (155.0 sqft)	4565 X 3140 mm
BATHROOM	4.3 sqm (46.3 sqft)	2245 X 2030 mm
WINTER GARDEN	5.3 sqm (57.05 sqft)	3270 X 1510 mm

APARTMENT 70

TOTAL INTERNAL AREA 58.12 sqm / 625.60 sqft

KITCHEN	11.5 sqm (123.8 sqft)	4148 X 2750 mm
LIVING ROOM	11.8 sqm (127.0 sqft)	4435 X 2760 mm
MASTER BEDROOM	13.7 sqm (147.5 sqft)	3710 X 3710 mm
BATHROOM	6.2 sqm (66.7 sqft)	2600 X 2500 mm
WINTER GARDEN	5.12 sqm (54.89 sqft)	3160 X 1510 mm

APARTMENT 71

TOTAL INTERNAL AREA 94.01 sqm / 1011.92 sqft

KITCHEN	12.5 sqm (134.5 sqft)	6245 X 2045 mm
LIVING ROOM	19.4 sqm (208.8 sqft)	4705 X 3755 mm
MASTER BEDROOM	14.9 sqm (160.4 sqft)	4665 X 3050 mm
EN SUITE	3.7 sqm (39.8 sqft)	2395 X 1650 mm
BEDROOM TWO	13.1 sqm (141.0 sqft)	5115 X 2990 mm
BEDROOM THREE	8.3 sqm (89.3 sqft)	3315 X 2520 mm
BATHROOM	5.2 sqm (56.0 sqft)	2840 X 2045 mm
WINTER GARDEN	8.88 sqm (95.58 sqft)	5410 X 1510 mm

APARTMENT 72

TOTAL INTERNAL AREA 75.26 sqm / 810.09 sqft

KITCHEN	7.8 sqm (84 sqft)	4225 X 1850 mm
LIVING ROOM	21.2 sqm (228.2 sqft)	5020 X 4225 mm
MASTER BEDROOM	13.2 sqm (142.1 sqft)	4250 X 3045 mm
EN SUITE	3.6 sqm (38.8 sqft)	2075 X 1800 mm
BEDROOM TWO	12.0 sqm (129.2 sqft)	3625 X 3370 mm
BATHROOM	4.1 sqm (44.1 sqft)	2115 X 2025 mm
BALCONY	11.52 sqm (124 sqft)	7430 X 1550 mm



- 1 Bedroom Apartment
- 2 Bedroom Apartment
- 3 Bedroom Apartment
- Wheelchair Accessible
- Affordable Housing

For terms and conditions please see page 50.
Total internal areas exclude gardens, balconies, terraces and winter gardens.



FLOOR N^o 04



APARTMENT 73

TOTAL INTERNAL AREA 103.6 sqm / 1115.14 sqft

KITCHEN	8.5 sqm (91.5 sqft)	4005 X 2125 mm
LIVING ROOM	21.4 sqm (230.3 sqft)	4515 X 4770 mm
MASTER BEDROOM	17.2 sqm (185.1 sqft)	4450 X 3495 mm
EN SUITE	2.9 sqm (31.2 sqft)	2200 X 1400 mm
BEDROOM TWO	13.8 sqm (148.5 sqft)	4760 X 2995 mm
EN SUITE	5.6 sqm (60.3 sqft)	2655 X 2155 mm
BEDROOM THREE	12.9 sqm (138.9 sqft)	3840 X 3370 mm
BATHROOM	4.3 sqm (46.3 sqft)	2115 X 2030 mm
TERRACE	71.34 sqm (767.90 sqft)	14070 X 5060 mm

APARTMENT 74

TOTAL INTERNAL AREA 58.12 sqm / 625.60 sqft

KITCHEN	11.5 sqm (123.8 sqft)	4148 X 2750 mm
LIVING ROOM	11.8 sqm (127 sqft)	4435 X 2760 mm
MASTER BEDROOM	13.7 sqm (147.5 sqft)	3710 X 3710 mm
BATHROOM	6.2 sqm (66.7 sqft)	2600 X 2500 mm
WINTER GARDEN	4.97 sqm (53.50 sqft)	3160 X 1405 mm

APARTMENT 75

TOTAL INTERNAL AREA 95.18 sqm / 1024.51 sqft

KITCHEN	6.2 sqm (66.7 sqft)	4600 X 1250 mm
LIVING ROOM	26.6 sqm (286.3 sqft)	5710 X 4885 mm
MASTER BEDROOM	13.7 sqm (147.5 sqft)	4460 X 3165 mm
EN SUITE	2.9 sqm (31.2 sqft)	2100 X 1500 mm
BEDROOM TWO	12.3 sqm (132.4 sqft)	4700 X 2875 mm
BEDROOM THREE	8.7 sqm (93.6 sqft)	2995 X 2915 mm
BATHROOM	4.1 sqm (44.1 sqft)	2115 X 2030 mm
TERRACE	83.53 sqm (899.11 sqft)	15200 X 5495 mm



- 1 Bedroom Apartment
- 3 Bedroom Apartment
- Wheelchair Accessible
- Affordable Housing

For terms and conditions please see page 50.
Total internal areas exclude gardens, balconies, terraces and winter gardens.

FLOOR NO 05



APARTMENT 76

TOTAL INTERNAL AREA 103.6 sqm / 1115.14 sqft

KITCHEN	11.5 sqm (123.8 sqft)	5115 X 2250 mm
LIVING ROOM	22.4 sqm (241.1 sqft)	5115 X 4390 mm
MASTER BEDROOM	15.4 sqm (165.8 sqft)	4615 X 3400 mm
EN SUITE	5.5 sqm (59.2 sqft)	2370 X 2155 mm
BEDROOM TWO	13.2 sqm (142.1 sqft)	4380 X 3045 mm
BEDROOM THREE	9.6 sqm (103.3 sqft)	3495 X 2770 mm
BATHROOM	6.1 sqm (65.7 sqft)	2600 X 2400 mm
BALCONY	7.46 sqm (80.3 sqft)	4815 X 1550 mm

APARTMENT 77

TOTAL INTERNAL AREA 58.12 sqm / 625.60 sqft

KITCHEN	11.5 sqm (123.8 sqft)	4148 X 2750 mm
LIVING ROOM	11.8 sqm (127 sqft)	4435 X 2760 mm
MASTER BEDROOM	13.7 sqm (147.5 sqft)	3710 X 3710 mm
BATHROOM	6.2 sqm (66.7 sqft)	2600 X 2500 mm
WINTER GARDEN	5.12 sqm (54.89 sqft)	3160 X 1510 mm

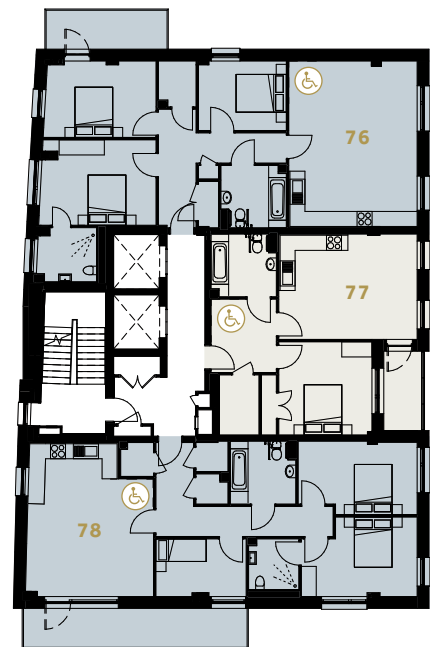
APARTMENT 78

TOTAL INTERNAL AREA 95.18 sqm / 1024.51 sqft

KITCHEN	10.1 sqm (108.7 sqft)	4995 X 2450 mm
LIVING ROOM	18.6 sqm (200.2 sqft)	5070 X 3685 mm
MASTER BEDROOM	13.3 sqm (143.2 sqft)	4615 X 3165 mm
EN SUITE	4.0 sqm (43.1 sqft)	2020 X 2000 mm
BEDROOM TWO	13.2 sqm (142.1 sqft)	4740 X 2925 mm
BEDROOM THREE	8.2 sqm (88.3 sqft)	3595 X 2295 mm
BATHROOM	6.4 sqm (68.9 sqft)	2600 X 2500 mm
BALCONY	13.79 sqm (148.43 sqft)	8900 X 1550 mm



- 1 Bedroom Apartment
- 3 Bedroom Apartment
- ♿ Wheelchair Accessible
- Affordable Housing



For terms and conditions please see page 50.
Total internal areas exclude gardens, balconies, terraces and winter gardens.

FLOOR NO 06



APARTMENT 79

TOTAL INTERNAL AREA 103.6 sqm / 1115.14 sqft

KITCHEN	11.5 sqm (123.8 sqft)	5115 X 2250 mm
LIVING ROOM	22.4 sqm (241.1 sqft)	5115 X 4390 mm
MASTER BEDROOM	15.4 sqm (165.8 sqft)	4615 X 3400 mm
EN SUITE	5.5 sqm (59.2 sqft)	2370 X 2155 mm
BEDROOM TWO	13.2 sqm (142.1 sqft)	4380 X 3045 mm
BEDROOM THREE	9.6 sqm (103.3 sqft)	3495 X 2770 mm
BATHROOM	6.1 sqm (65.7 sqft)	2600 X 2400 mm
BALCONY	7.5 sqm (80.3 sqft)	4815 X 1550 mm

APARTMENT 80

TOTAL INTERNAL AREA 58.12 sqm / 625.60 sqft

KITCHEN	11.5 sqm (123.8 sqft)	4148 X 2750 mm
LIVING ROOM	11.8 sqm (127 sqft)	4435 X 2760 mm
MASTER BEDROOM	13.7 sqm (147.5 sqft)	3710 X 3710 mm
BATHROOM	6.2 sqm (66.7 sqft)	2600 X 2500 mm
WINTER GARDEN	5.12 sqm (54.89 sqft)	3160 X 1510 mm

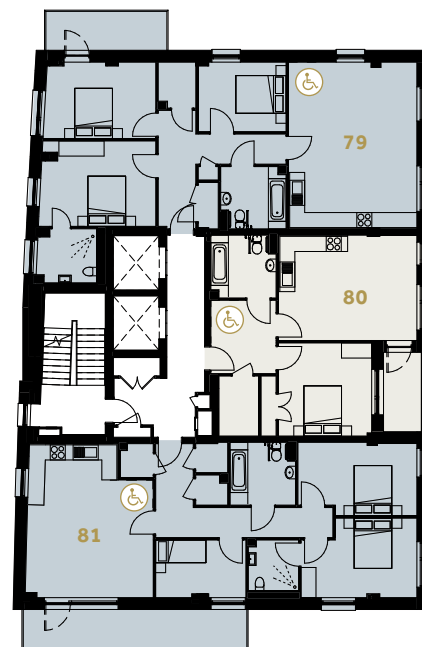
APARTMENT 81

TOTAL INTERNAL AREA 95.18 sqm / 1024.51 sqft

KITCHEN	10.1 sqm (108.7 sqft)	4995 X 2450 mm
LIVING ROOM	18.6 sqm (200.2 sqft)	5070 X 3685 mm
MASTER BEDROOM	13.3 sqm (143.2 sqft)	4615 X 3165 mm
EN SUITE	4.0 sqm (43.1 sqft)	2020 X 2000 mm
BEDROOM TWO	13.2 sqm (142.1 sqft)	4740 X 2925 mm
BEDROOM THREE	8.2 sqm (88.3 sqft)	3595 X 2295 mm
BATHROOM	6.4 sqm (68.9 sqft)	2600 X 2500 mm
BALCONY	13.79 sqm (148.43 sqft)	8900 X 1550 mm

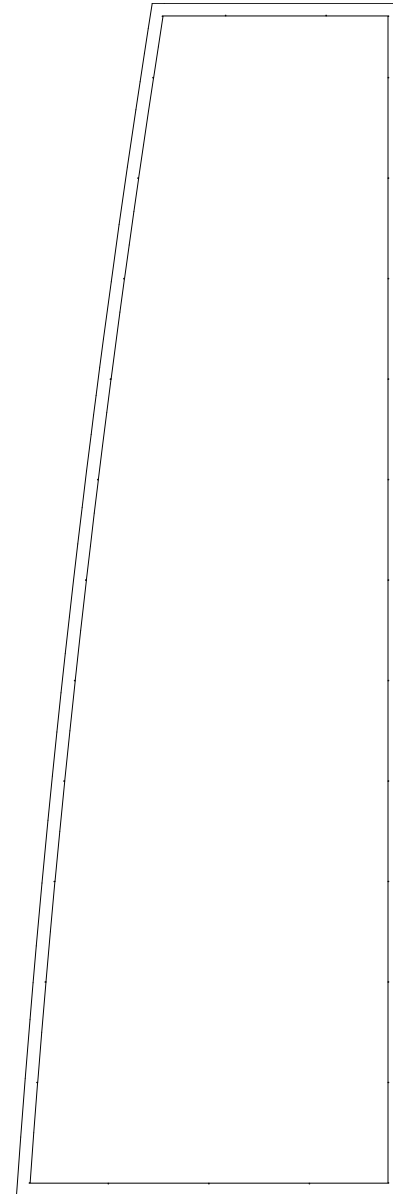


- 1 Bedroom Apartment
- 3 Bedroom Apartment
- Wheelchair Accessible
- Affordable Housing



For terms and conditions please see page 50.
Total internal areas exclude gardens, balconies, terraces and winter gardens.

FLOOR NO 07



APARTMENT 82

TOTAL INTERNAL AREA 103.6 sqm / 1115.14 sqft

KITCHEN	11.5 sqm (123.8 sqft)	5115 X 2250 mm
LIVING ROOM	22.4 sqm (241.1 sqft)	5115 X 4390 mm
MASTER BEDROOM	15.4 sqm (165.8 sqft)	4615 X 3400 mm
EN SUITE	5.5 sqm (59.2 sqft)	2370 X 2155 mm
BEDROOM TWO	13.2 sqm (142.1 sqft)	4380 X 3045 mm
BEDROOM THREE	9.6 sqm (103.3 sqft)	3495 X 2770 mm
BATHROOM	6.1 sqm (65.7 sqft)	2600 X 2400 mm
BALCONY	7.5 sqm (80.3 sqft)	4815 X 1550 mm

APARTMENT 83

TOTAL INTERNAL AREA 58.12 sqm / 625.60 sqft

KITCHEN	11.5 sqm (123.8 sqft)	4148 X 2750 mm
LIVING ROOM	11.8 sqm (127 sqft)	4435 X 2760 mm
MASTER BEDROOM	13.7 sqm (147.5 sqft)	3710 X 3710 mm
BATHROOM	6.2 sqm (66.7 sqft)	2600 X 2500 mm
WINTER GARDEN	5.12 sqm (54.89 sqft)	3160 X 1510 mm

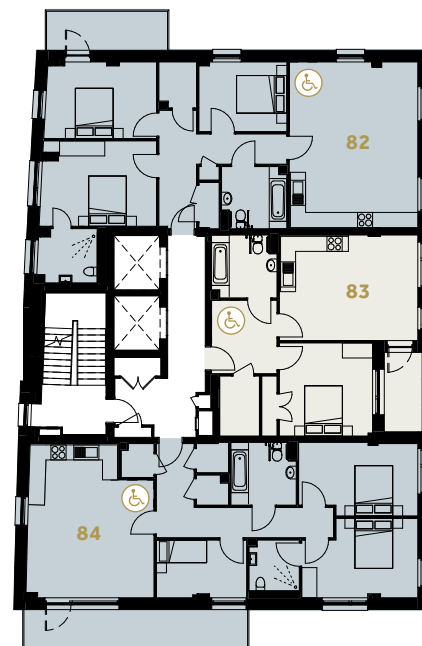
APARTMENT 84

TOTAL INTERNAL AREA 95.18 sqm / 1024.51 sqft

KITCHEN	10.1 sqm (108.7 sqft)	4995 X 2450 mm
LIVING ROOM	18.6 sqm (200.2 sqft)	5070 X 3685 mm
MASTER BEDROOM	13.3 sqm (143.2 sqft)	4615 X 3165 mm
EN SUITE	4.0 sqm (43.1 sqft)	2020 X 2000 mm
BEDROOM TWO	13.2 sqm (142.1 sqft)	4740 X 2925 mm
BEDROOM THREE	8.2 sqm (88.3 sqft)	3595 X 2295 mm
BATHROOM	6.4 sqm (68.9 sqft)	2600 X 2500 mm
BALCONY	13.79 sqm (148.43 sqft)	8900 X 1550 mm

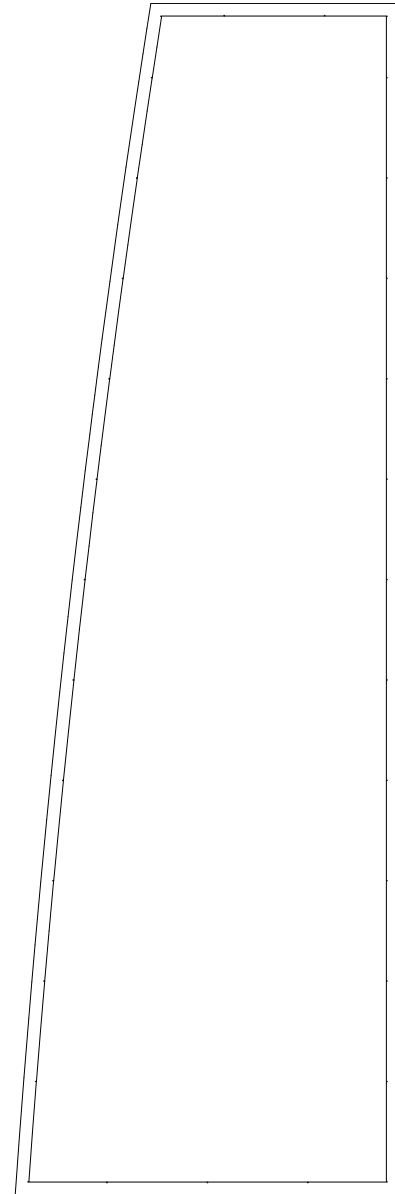


- 1 Bedroom Apartment
- 3 Bedroom Apartment
- ♿ Wheelchair Accessible



For terms and conditions please see page 50.
Total internal areas exclude gardens, balconies, terraces and winter gardens.

FLOOR NO 08



APARTMENT 85

TOTAL INTERNAL AREA 103.6 sqm / 1115.14 sqft

KITCHEN	11.5 sqm (123.8 sqft)	5115 X 2250 mm
LIVING ROOM	22.4 sqm (241.1 sqft)	5115 X 4390 mm
MASTER BEDROOM	15.4 sqm (165.8 sqft)	4615 X 3400 mm
EN SUITE	5.5 sqm (59.2 sqft)	2370 X 2155 mm
BEDROOM TWO	13.2 sqm (142.1 sqft)	4380 X 3045 mm
BEDROOM THREE	9.6 sqm (103.3 sqft)	3495 X 2770 mm
BATHROOM	6.1 sqm (65.7 sqft)	2600 X 2400 mm
BALCONY	7.5 sqm (80.3 sqft)	4815 X 1550 mm

APARTMENT 86

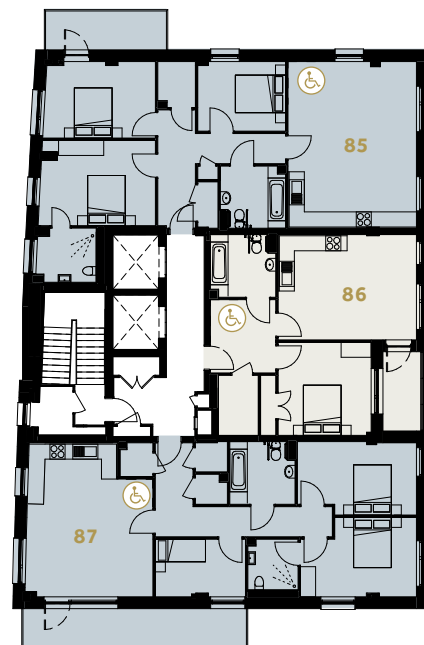
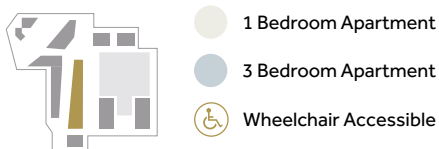
TOTAL INTERNAL AREA 58.12 sqm / 625.60 sqft

KITCHEN	11.5 sqm (123.8 sqft)	4148 X 2750 mm
LIVING ROOM	11.8 sqm (127 sqft)	4435 X 2760 mm
MASTER BEDROOM	13.7 sqm (147.5 sqft)	3710 X 3710 mm
BATHROOM	6.2 sqm (66.7 sqft)	2600 X 2500 mm
WINTER GARDEN	5.12 sqm (54.89 sqft)	3160 X 1510 mm

APARTMENT 87

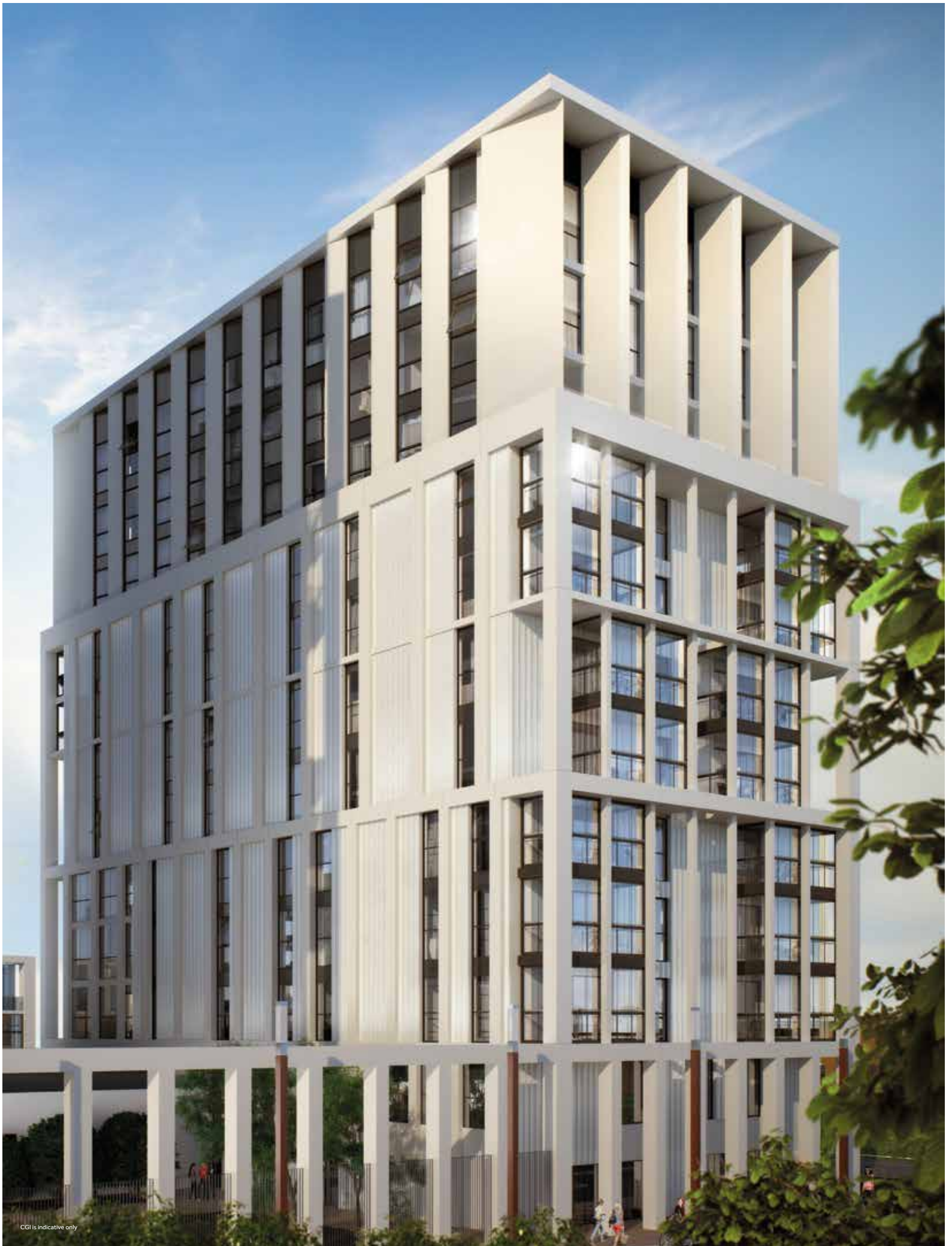
TOTAL INTERNAL AREA 95.18 sqm / 1024.51 sqft

KITCHEN	10.1 sqm (108.7 sqft)	4995 X 2450 mm
LIVING ROOM	18.6 sqm (200.2 sqft)	5070 X 3685 mm
MASTER BEDROOM	13.3 sqm (143.2 sqft)	4615 X 3165 mm
EN SUITE	4.0 sqm (43.1 sqft)	2020 X 2000 mm
BEDROOM TWO	13.2 sqm (142.1 sqft)	4740 X 2925 mm
BEDROOM THREE	8.2 sqm (88.3 sqft)	3595 X 2295 mm
BATHROOM	6.4 sqm (68.9 sqft)	2600 X 2500 mm
BALCONY	13.79 sqm (148.43 sqft)	8900 X 1550 mm



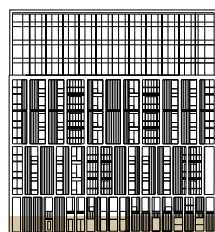
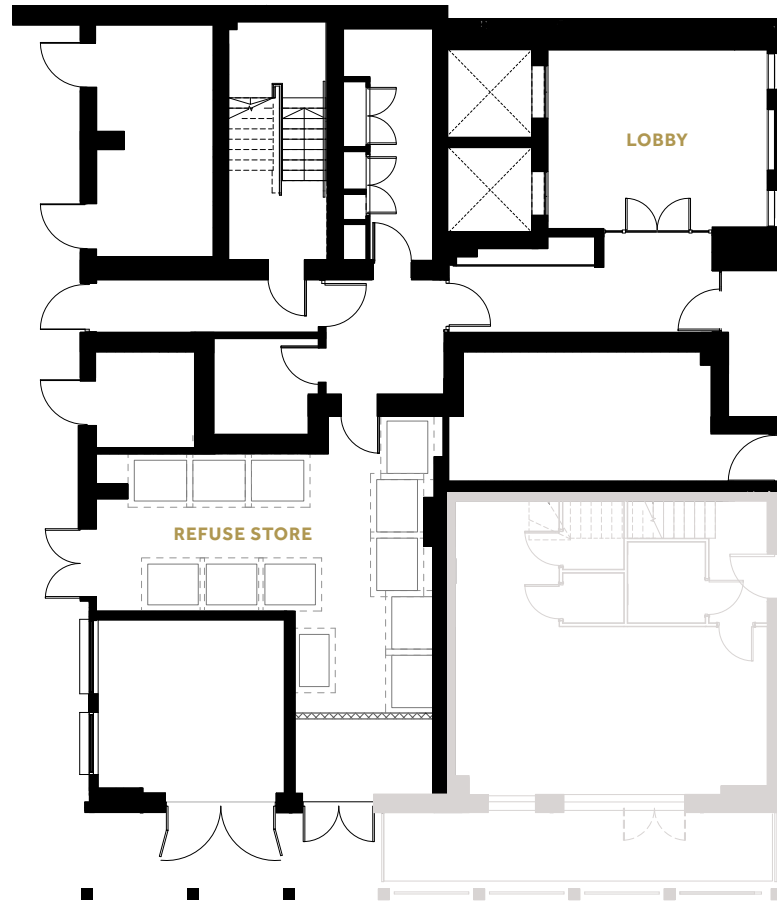
For terms and conditions please see page 50.
Total internal areas exclude gardens, balconies, terraces and winter gardens.

BATTERSEA EXCHANGE



CGI is indicative only

FLOOR N^o 00



○ Affordable Housing

For terms and conditions please see page 50.
Total internal areas exclude gardens, balconies, terraces and winter gardens.

FLOOR NO 01



STUDIO 2

TOTAL INTERNAL AREA	40.43 sqm / 435.18 sqft	
KITCHEN	4.7 sqm (50.6 sqft)	2250 X 2087 mm
LIVING ROOM	17.7 sqm (190.5 sqft)	5600 X 3602 mm
MASTER BEDROOM	9.4 sqm (101.2 sqft)	3772 X 2490 mm
BATHROOM	4.6 sqm (49.5 sqft)	2100 X 2000 mm
WINTER GARDEN	4.83 sqm (51.99 sqft)	2916 X 1424 mm

APARTMENT 3

TOTAL INTERNAL AREA	92.15 sqm / 991.89 sqft	
KITCHEN	12.1 sqm (130.2 sqft)	5868 X 2108 mm
LIVING ROOM	21.5 sqm (231.4 sqft)	4755 X 4309 mm
MASTER BEDROOM	16.5 sqm (177.6 sqft)	5140 X 2765 mm
EN SUITE	2.9 sqm (31.2 sqft)	2100 X 1500 mm
BEDROOM TWO	12.4 sqm (133.5 sqft)	4860 X 3015 mm
BEDROOM THREE	8.2 sqm (88.3 sqft)	3177 X 2600 mm
BATHROOM	5.2 sqm (56.0 sqft)	2880 X 2000 mm
WINTER GARDEN	10.4 sqm (111.94 sqft)	6467 X 1460 mm

APARTMENT 4

TOTAL INTERNAL AREA	78.81 sqm / 848.30 sqft	
KITCHEN	12.3 sqm (132.4 sqft)	5885 X 2095 mm
LIVING ROOM	16.5 sqm (177.6 sqft)	5255 X 3022 mm
MASTER BEDROOM	12.8 sqm (137.8 sqft)	3630 X 3560 mm
EN SUITE	3.7 sqm (39.8 sqft)	2100 X 1877 mm
BEDROOM TWO	13.1 sqm (141.0 sqft)	4375 X 2765 mm
BATHROOM	4.0 sqm (43.1 sqft)	2100 X 2000 mm
WINTER GARDEN	10.07 sqm (108.39 sqft)	6467 X 1424 mm

APARTMENT 5

TOTAL INTERNAL AREA	55.48 sqm / 597.18 sqft	
KITCHEN	6.2 sqm (66.7 sqft)	2970 X 1950 mm
LIVING ROOM	20.4 sqm (219.6 sqft)	5517 X 3705 mm
MASTER BEDROOM	10.7 sqm (115.2 sqft)	3320 X 3257 mm
BATHROOM	4.1 sqm (44.1 sqft)	2100 X 2100 mm
WINTER GARDEN	9.99 sqm (107.53 sqft)	6467 X 1424 mm

STUDIO 6

TOTAL INTERNAL AREA	41.02 sqm / 441.54 sqft	
KITCHEN	4.6 sqm (49.5 sqft)	2250 X 2087 mm
LIVING ROOM	17.9 sqm (192.7 sqft)	5600 X 3602 mm
MASTER BEDROOM	9.4 sqm (101.2 sqft)	3772 X 2490 mm
BATHROOM	4.6 sqm (49.5 sqft)	2100 X 2000 mm
WINTER GARDEN	4.81 sqm (51.77 sqft)	2916 X 1424 mm



- Studio
- 1 Bedroom Apartment
- 2 Bedroom Apartment
- 3 Bedroom Apartment
- Affordable Housing

For terms and conditions please see page 50.
Total internal areas exclude gardens, balconies, terraces and winter gardens.

FLOOR NO 02



APARTMENT 7

TOTAL INTERNAL AREA 73.74 sqm / 793.73 sqft

KITCHEN	9.3 sqm (100.1 sqft)	4780 X 1995 mm
LIVING ROOM	22.4 sqm (241.1 sqft)	5855 X 3487 mm
MASTER BEDROOM	14.9 sqm (160.4 sqft)	5286 X 2750 mm
EN SUITE	2.9 sqm (31.2 sqft)	2060 X 1510 mm
BEDROOM TWO	10.5 sqm (113.0 sqft)	4233 X 2472 mm
BATHROOM	4.2 sqm (45.2 sqft)	2100 X 2000 mm
WINTER GARDEN	5.87 sqm (63.18 sqft)	3916 X 1424 mm

APARTMENT 8

TOTAL INTERNAL AREA 79.55 sqm / 856.27 sqft

KITCHEN	7.9 sqm (85.0 sqft)	3850 X 2075 mm
LIVING ROOM	18.6 sqm (200.2 sqft)	4890 X 3850 mm
MASTER BEDROOM	13.9 sqm (149.6 sqft)	4205 X 3350 mm
EN SUITE	3.0 sqm (32.3 sqft)	2100 X 1500 mm
BEDROOM TWO	12.2 sqm (131.3 sqft)	3955 X 3200 mm
BATHROOM	4.7 sqm (50.6 sqft)	2105 X 2100 mm
WINTER GARDEN	7.27 sqm (78.25 sqft)	4354 X 1480 mm

APARTMENT 9

TOTAL INTERNAL AREA 82.3 sqm / 885.87 sqft

KITCHEN / LIVING ROOM	26.9 sqm (289.5 sqft)	5690 X 4350 mm
MASTER BEDROOM	13.9 sqm (149.6 sqft)	3839 X 3700 mm
BEDROOM TWO	13.9 sqm (149.6 sqft)	4670 X 2750 mm
BATHROOM	9.1 sqm (98.0 sqft)	3700 X 2650 mm
WINTER GARDEN	7.27 sqm (78.25 sqft)	4354 X 1480 mm

APARTMENT 10

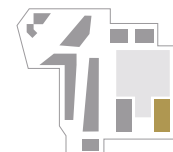
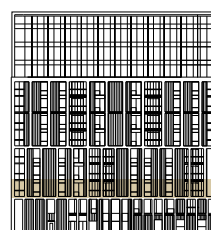
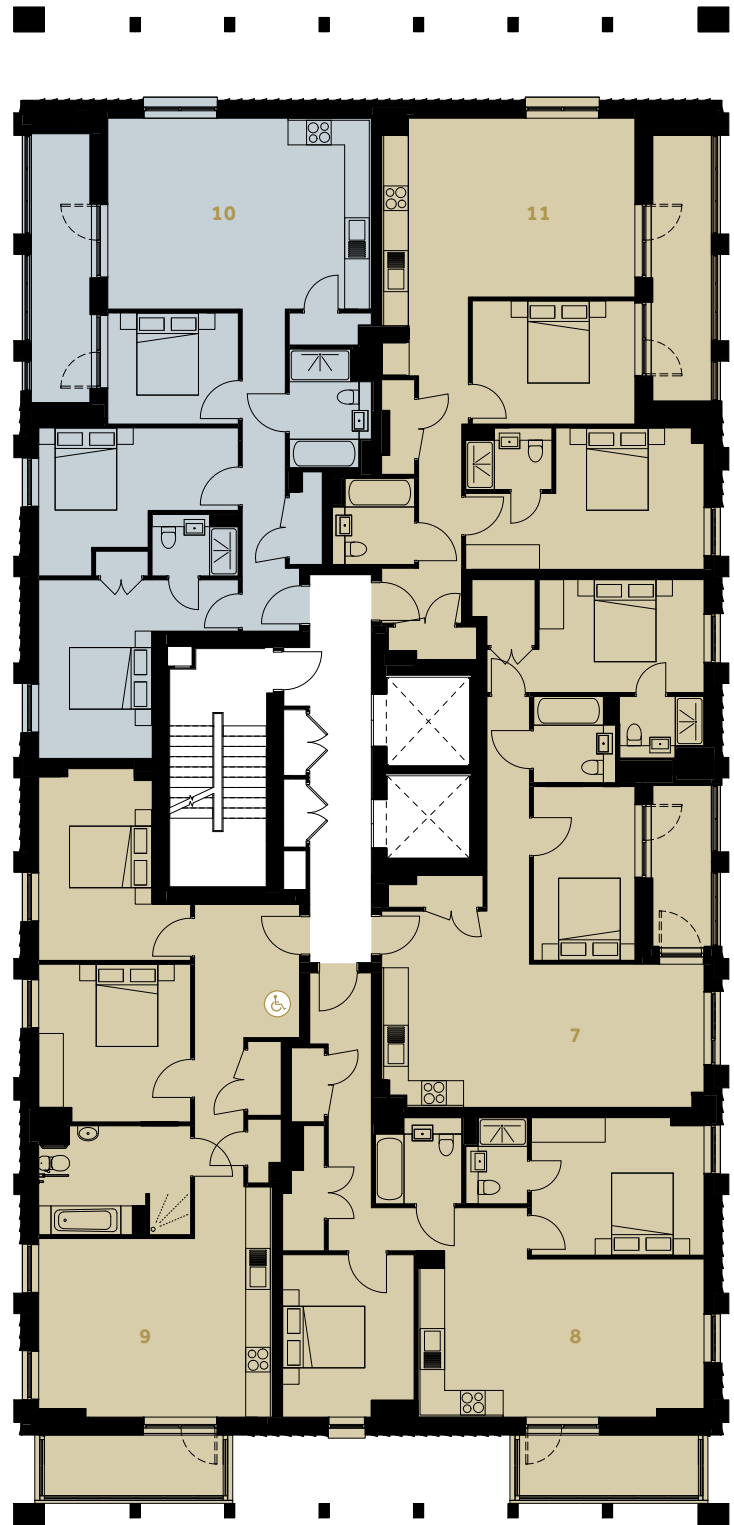
TOTAL INTERNAL AREA 91.37 sqm / 983.50 sqft

KITCHEN	9.7 sqm (104.4 sqft)	4650 X 2030 mm
LIVING ROOM	20.1 sqm (216.4 sqft)	4650 X 4387 mm
MASTER BEDROOM	14.6 sqm (157.2 sqft)	4860 X 4350 mm
EN SUITE	2.9 sqm (31.2 sqft)	2100 X 1500 mm
BEDROOM TWO	13.1 sqm (141.0 sqft)	4860 X 2910 mm
BEDROOM THREE	8.6 sqm (92.6 sqft)	3177 X 2705 mm
BATHROOM	5.2 sqm (56 sqft)	2900 X 2000 mm
WINTER GARDEN	9.5 sqm (102.26 sqft)	6547 X 1424 mm

APARTMENT 11

TOTAL INTERNAL AREA 79.8 sqm / 858.96 sqft

KITCHEN / LIVING ROOM	30.5 sqm (328.3 sqft)	6167 X 4355 mm
MASTER BEDROOM	16.4 sqm (176.5 sqft)	5805 X 3440 mm
EN SUITE	2.9 sqm (31.2 sqft)	2100 X 1500 mm
BEDROOM TWO	11.9 sqm (128.1 sqft)	3960 X 2999 mm
BATHROOM	4.0 sqm (43.1 sqft)	2100 X 2000 mm
WINTER GARDEN	9.61 sqm (103.44 sqft)	6467 X 1424 mm



- 2 Bedroom Apartment
- 3 Bedroom Apartment
- Wheelchair Accessible

For terms and conditions please see page 50.
Total internal areas exclude gardens, balconies, terraces and winter gardens.

FLOOR NO 03



APARTMENT 12

TOTAL INTERNAL AREA 73.74 sqm / 793.73 sqft

KITCHEN	9.3 sqm (100.1 sqft)	4780 X 1995 mm
LIVING ROOM	22.4 sqm (241.1 sqft)	5855 X 3487 mm
MASTER BEDROOM	14.9 sqm (160.4 sqft)	5286 X 2750 mm
EN SUITE	2.9 sqm (31.2 sqft)	2060 X 1510 mm
BEDROOM TWO	10.5 sqm (113.0 sqft)	4233 X 2472 mm
BATHROOM	4.2 sqm (45.2 sqft)	2100 X 2000 mm
WINTER GARDEN	5.87 sqm (63.18 sqft)	3916 X 1424 mm

APARTMENT 13

TOTAL INTERNAL AREA 79.55 sqm / 856.27 sqft

KITCHEN	7.9 sqm (85.0 sqft)	3850 X 2075 mm
LIVING ROOM	18.6 sqm (200.2 sqft)	4890 X 3850 mm
MASTER BEDROOM	13.9 sqm (149.6 sqft)	4205 X 3350 mm
EN SUITE	3.0 sqm (32.3 sqft)	2100 X 1500 mm
BEDROOM TWO	12.2 sqm (131.3 sqft)	3955 X 3200 mm
BATHROOM	4.7 sqm (50.6 sqft)	2105 X 2100 mm
WINTER GARDEN	7.27 sqm (78.25 sqft)	4354 X 1480 mm

APARTMENT 14

TOTAL INTERNAL AREA 82.3 sqm / 885.87 sqft

KITCHEN / LIVING ROOM	26.9 sqm (289.5 sqft)	5690 X 4350 mm
MASTER BEDROOM	13.9 sqm (149.6 sqft)	3839 X 3700 mm
BEDROOM TWO	13.9 sqm (149.6 sqft)	4670 X 2750 mm
BATHROOM	9.1 sqm (98.0 sqft)	3700 X 2650 mm
WINTER GARDEN	7.27 sqm (78.25 sqft)	4354 X 1480 mm

APARTMENT 15

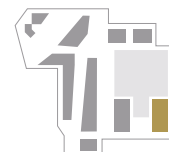
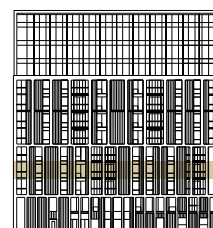
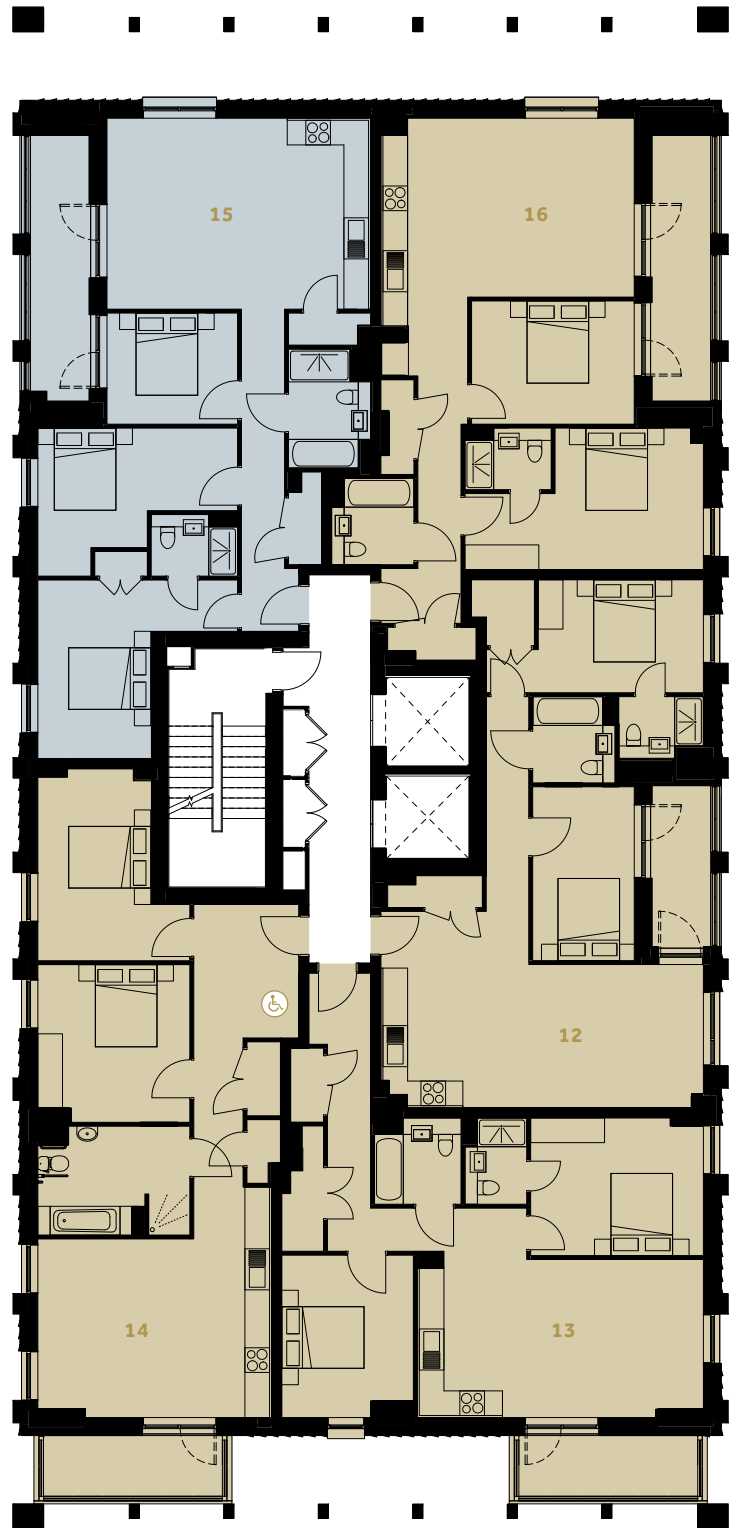
TOTAL INTERNAL AREA 91.37 sqm / 983.50 sqft

KITCHEN	9.7 sqm (104.4 sqft)	4650 X 2030 mm
LIVING ROOM	20.1 sqm (216.4 sqft)	4650 X 4387 mm
MASTER BEDROOM	14.6 sqm (157.2 sqft)	4860 X 4350 mm
EN SUITE	2.9 sqm (31.2 sqft)	2100 X 1500 mm
BEDROOM TWO	13.1 sqm (141.0 sqft)	4860 X 2910 mm
BEDROOM THREE	8.6 sqm (92.6 sqft)	3177 X 2705 mm
BATHROOM	5.2 sqm (56 sqft)	2900 X 2000 mm
WINTER GARDEN	9.5 sqm (102.26 sqft)	6547 X 1424 mm

APARTMENT 16

TOTAL INTERNAL AREA 79.8 sqm / 858.96 sqft

KITCHEN / LIVING ROOM	30.5 sqm (328.3 sqft)	6167 X 4355 mm
MASTER BEDROOM	16.4 sqm (176.5 sqft)	5805 X 3440 mm
EN SUITE	2.9 sqm (31.2 sqft)	2100 X 1500 mm
BEDROOM TWO	11.9 sqm (128.1 sqft)	3960 X 2999 mm
BATHROOM	4.0 sqm (43.1 sqft)	2100 X 2000 mm
WINTER GARDEN	9.61 sqm (103.44 sqft)	6467 X 1424 mm



- 2 Bedroom Apartment
- 3 Bedroom Apartment
- Wheelchair Accessible

For terms and conditions please see page 50.
Total internal areas exclude gardens, balconies, terraces and winter gardens.

FLOOR NO 04



APARTMENT 17

TOTAL INTERNAL AREA 73.74 sqm / 793.73sqft

KITCHEN	9.3 sqm (100.1 sqft)	4780 X 1995 mm
LIVING ROOM	22.4 sqm (241.1 sqft)	5855 X 3487 mm
MASTER BEDROOM	14.9 sqm (160.4 sqft)	5286 X 2750 mm
EN SUITE	2.9 sqm (31.2 sqft)	2060 X 1510 mm
BEDROOM TWO	10.5 sqm (113.0 sqft)	4233 X 2472 mm
BATHROOM	4.2 sqm (45.2 sqft)	2100 X 2000 mm
WINTER GARDEN	5.87 sqm (63.18 sqft)	3916 X 1424 mm

APARTMENT 18

TOTAL INTERNAL AREA 81.26 sqm / 874.68 sqft

KITCHEN	8.7 sqm (93.6 sqft)	3842 X 2320 mm
LIVING ROOM	18.4 sqm (198.1 sqft)	4844 X 3842 mm
MASTER BEDROOM	15.0 sqm (161.5 sqft)	4526 X 3358 mm
EN SUITE	3.0 sqm (32.38 sqft)	2100 X 1500 mm
BEDROOM TWO	12.9 sqm (139.9 sqft)	3797 X 3497 mm
BATHROOM	4.1 sqm (44.6 sqft)	2100 X 2100 mm
WINTER GARDEN	7.27 sqm (78.25 sqft)	4444 X 1525 mm

APARTMENT 19

TOTAL INTERNAL AREA 80.44 sqm / 865.85 sqft

KITCHEN / LIVING ROOM	28.3 sqm (304.6 sqft)	5500 X 5196 mm
MASTER BEDROOM	12.5 sqm (134.5 sqft)	3975 X 3250 mm
EN SUITE	3.2 sqm (34.4 sqft)	2350 X 1500 mm
BEDROOM TWO	13 sqm (139.9 sqft)	4590 X 2765 mm
BATHROOM	4 sqm (43.1 sqft)	2100 X 2000 mm
WINTER GARDEN	7.27 sqm (78.25 sqft)	4444 X 1525 mm

APARTMENT 20

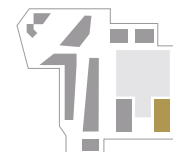
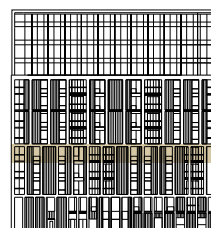
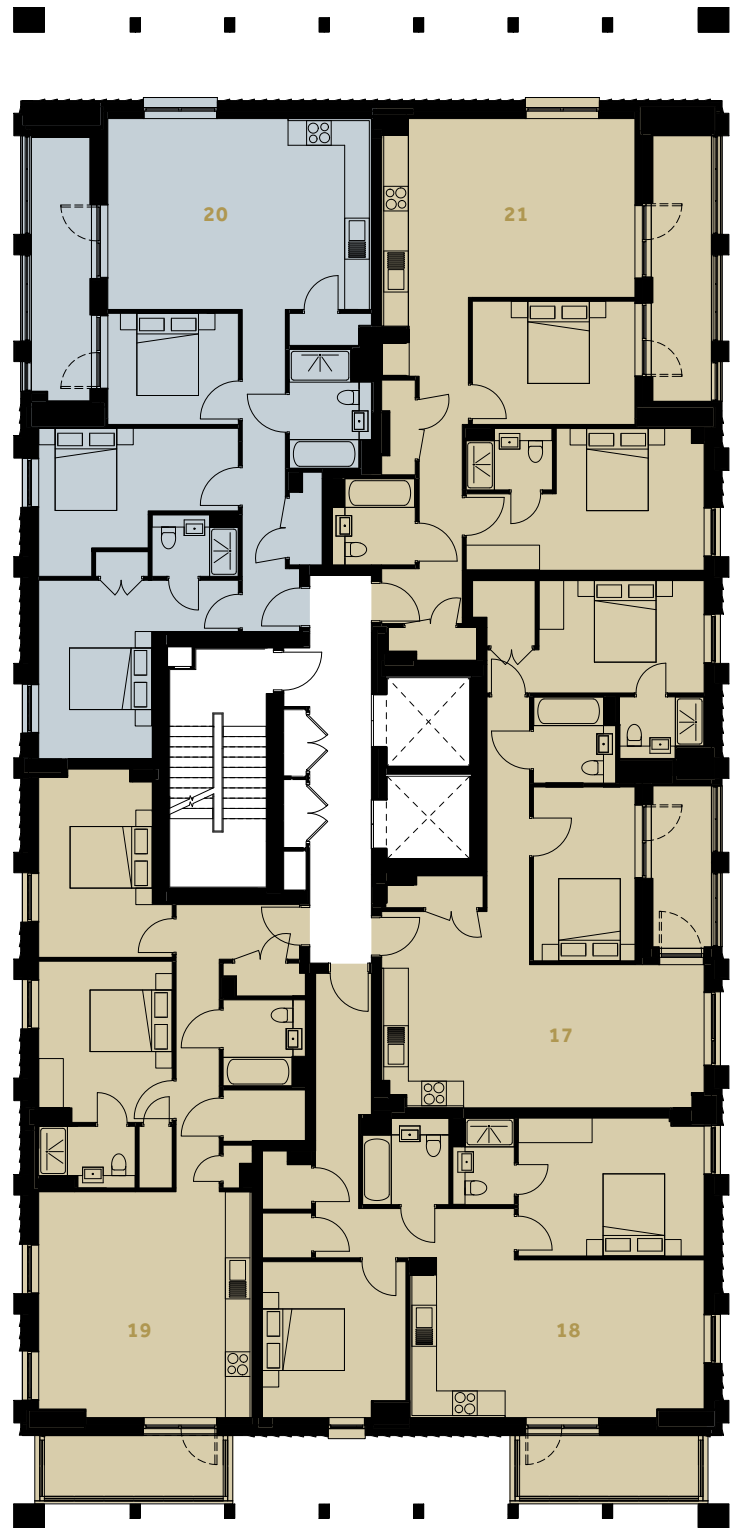
TOTAL INTERNAL AREA 91.37 sqm / 983.50 sqft

KITCHEN	9.7 sqm (104.4 sqft)	4650 X 2030 mm
LIVING ROOM	20.1 sqm (216.4 sqft)	4650 X 4387 mm
MASTER BEDROOM	14.6 sqm (157.2 sqft)	4860 X 4350 mm
EN SUITE	2.9 sqm (31.2 sqft)	2100 X 1500 mm
BEDROOM TWO	13.1 sqm (141.0 sqft)	4860 X 2910 mm
BEDROOM THREE	8.6 sqm (92.6 sqft)	3177 X 2705 mm
BATHROOM	5.2 sqm (56 sqft)	2900 X 2000 mm
WINTER GARDEN	9.5 sqm (102.26 sqft)	6547 X 1424 mm

APARTMENT 21

TOTAL INTERNAL AREA 79.8 sqm / 858.96 sqft

KITCHEN / LIVING ROOM	30.5 sqm (328.3 sqft)	6167 X 4355 mm
MASTER BEDROOM	16.4 sqm (176.5 sqft)	5805 X 3440 mm
EN SUITE	2.9 sqm (31.2 sqft)	2100 X 1500 mm
BEDROOM TWO	11.9 sqm (128.1 sqft)	3960 X 2999 mm
BATHROOM	4.0 sqm (43.1 sqft)	2100 X 2000 mm
WINTER GARDEN	9.61 sqm (103.44 sqft)	6467 X 1424 mm



- 2 Bedroom Apartment
- 3 Bedroom Apartment

For terms and conditions please see page 50.
Total internal areas exclude gardens, balconies, terraces and winter gardens.

FLOOR NO 05



APARTMENT 22, 27

TOTAL INTERNAL AREA	50.01 sqm / 539.27 sqft	
KITCHEN	10.6 sqm (114.1 sqft)	4550 X 2320 mm
LIVING ROOM	13.4 sqm (144.2 sqft)	4550 X 2980 mm
MASTER BEDROOM	12.4 sqm (133.5 sqft)	3595 X 3505 mm
BATHROOM	4 sqm (43.1 sqft)	2113 X 2000 mm
WINTER GARDEN	5.34 sqm (57.48 sqft)	2953 X 1655 mm

APARTMENT 23

TOTAL INTERNAL AREA	81.27 sqm / 874.78 sqft	
KITCHEN	8.7 sqm (93.6 sqft)	3842 X 2320 mm
LIVING ROOM	18.4 sqm (198.1 sqft)	4844 X 3842 mm
MASTER BEDROOM	15.1 sqm (162.5 sqft)	4526 X 3558 mm
EN SUITE	3.0 sqm (32.3 sqft)	2100 X 1500 mm
BEDROOM TWO	12.9 sqm (138.9 sqft)	3797 X 3496 mm
BATHROOM	4.1 sqm (44.1 sqft)	2100 X 2100 mm
WINTER GARDEN	7.27 sqm (78.25 sqft)	4444 X 1525 mm

APARTMENT 24

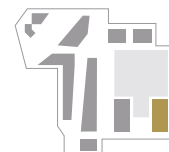
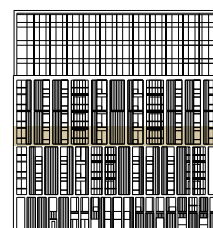
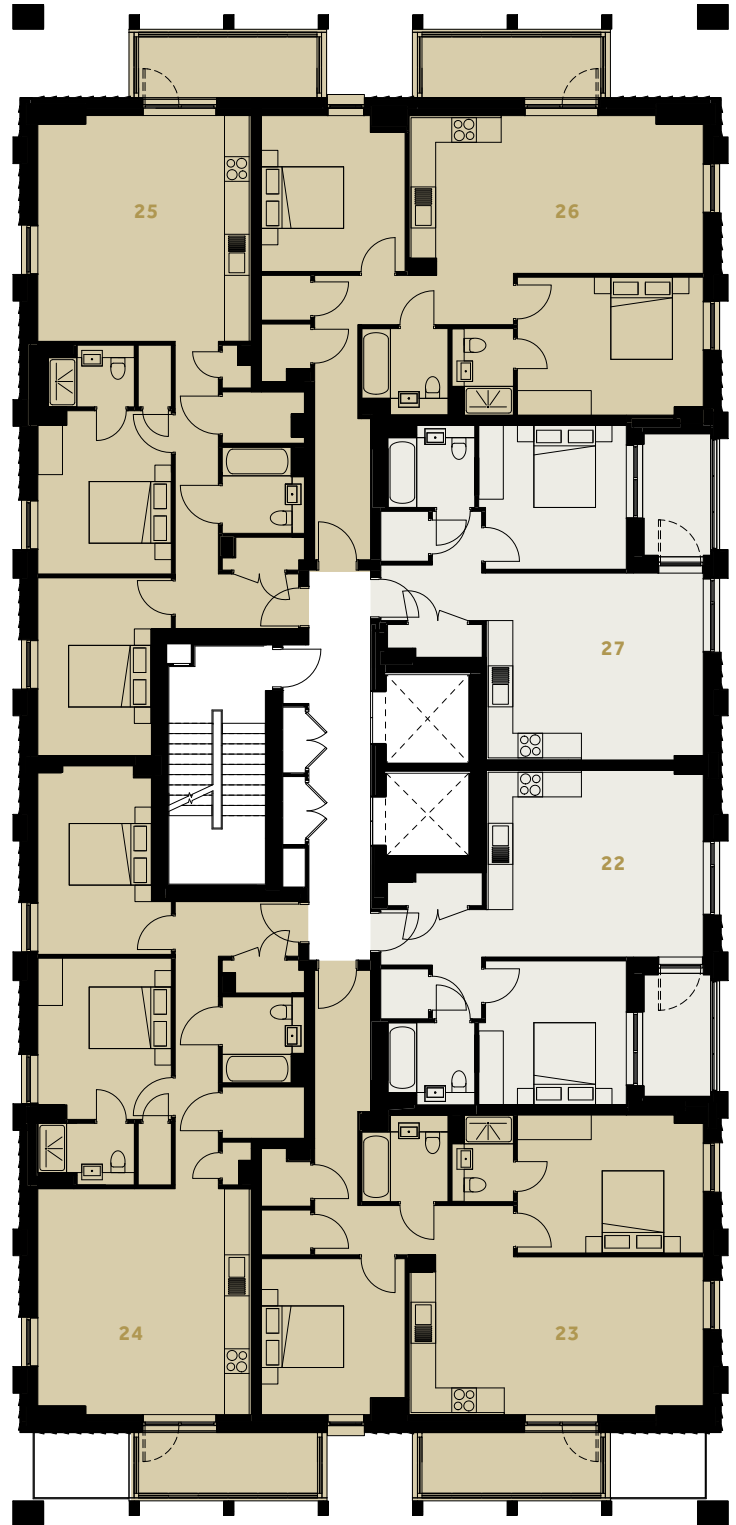
TOTAL INTERNAL AREA	80.41 sqm / 865.53 sqft	
KITCHEN / LIVING ROOM	28.3 sqm (304.6 sqft)	5500 X 5195 mm
MASTER BEDROOM	12.5 sqm (134.5 sqft)	3925 X 3250 mm
EN SUITE	3.2 sqm (34.4 sqft)	2350 X 1500 mm
BEDROOM TWO	13.1 sqm (141.0 sqft)	4590 X 2765 mm
BATHROOM	4 sqm (43.1 sqft)	2100 X 2000 mm
WINTER GARDEN	7.27 sqm (78.25 sqft)	4444 X 1525 mm

APARTMENT 25

TOTAL INTERNAL AREA	80.35 sqm / 864.88 sqft	
KITCHEN / LIVING ROOM	28.3 sqm (304.6 sqft)	5500 X 5195 mm
MASTER BEDROOM	12.7 sqm (136.7 sqft)	3975 X 3250 mm
EN SUITE	2.9 sqm (31.2 sqft)	2100 X 1500 mm
BEDROOM TWO	12.6 sqm (135.6 sqft)	4325 X 2750 mm
BATHROOM	4.0 sqm (43.1 sqft)	2100 X 2000 mm
WINTER GARDEN	7.27 sqm (78.25 sqft)	4434 X 1480 mm

APARTMENT 26

TOTAL INTERNAL AREA	81.27 sqm / 874.78 sqft	
KITCHEN	8.4 sqm (90.4 sqft)	3842 X 2245 mm
LIVING ROOM	18.7 sqm (201.3 sqft)	4919 X 3842 mm
MASTER BEDROOM	15.1 sqm (162.5 sqft)	4526 X 3358 mm
EN SUITE	3.0 sqm (32.3 sqft)	2100 X 1500 mm
BEDROOM TWO	12.9 sqm (138.9 sqft)	3797 X 3496 mm
BATHROOM	4.1 sqm (44.1 sqft)	2100 X 2100 mm
WINTER GARDEN	7.27 sqm (78.25 sqft)	4354 X 1480 mm



- 1 Bedroom Apartment
- 2 Bedroom Apartment

For terms and conditions please see page 50.
Total internal areas exclude gardens, balconies, terraces and winter gardens.

FLOOR NO 06



APARTMENT 28, 33

TOTAL INTERNAL AREA	50.1 sqm / 539.27 sqft	
KITCHEN	10.6 sqm (114.1 sqft)	4550 X 2320 mm
LIVING ROOM	13.4 sqm (144.2 sqft)	4550 X 2980 mm
MASTER BEDROOM	12.4 sqm (133.5 sqft)	3595 X 3505 mm
BATHROOM	4 sqm (43.1 sqft)	2113 X 2000 mm
WINTER GARDEN	5.34 sqm (57.48 sqft)	2953 X 1655 mm

APARTMENT 29

TOTAL INTERNAL AREA	81.27 sqm / 874.78 sqft	
KITCHEN	8.7 sqm (93.6 sqft)	3842 X 2320 mm
LIVING ROOM	18.4 sqm (198.1 sqft)	4844 X 3842 mm
MASTER BEDROOM	15.1 sqm (162.5 sqft)	4526 X 3558 mm
EN SUITE	3.0 sqm (32.3 sqft)	2100 X 1500 mm
BEDROOM TWO	12.9 sqm (138.9 sqft)	3797 X 3496 mm
BATHROOM	4.1 sqm (44.1 sqft)	2100 X 2100 mm
WINTER GARDEN	7.27 sqm (78.25 sqft)	4444 X 1525 mm

APARTMENT 30

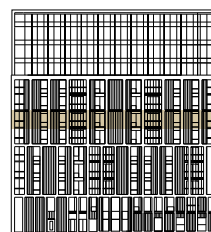
TOTAL INTERNAL AREA	80.41 sqm / 865.53 sqft	
KITCHEN / LIVING ROOM	28.3 sqm (304.6 sqft)	5500 X 5195 mm
MASTER BEDROOM	12.5 sqm (134.5 sqft)	3925 X 3250 mm
EN SUITE	3.2 sqm (34.4 sqft)	2350 X 1500 mm
BEDROOM TWO	13.1 sqm (141.0 sqft)	4590 X 2765 mm
BATHROOM	4 sqm (43.1 sqft)	2100 X 2000 mm
WINTER GARDEN	7.27 sqm (78.25 sqft)	4444 X 1525 mm

APARTMENT 31

TOTAL INTERNAL AREA	80.35 sqm / 864.88 sqft	
KITCHEN / LIVING ROOM	28.3 sqm (304.6 sqft)	5500 X 5195 mm
MASTER BEDROOM	12.7 sqm (136.7 sqft)	3975 X 3250 mm
EN SUITE	2.9 sqm (31.2 sqft)	2100 X 1500 mm
BEDROOM TWO	12.6 sqm (135.6 sqft)	4325 X 2750 mm
BATHROOM	4.0 sqm (43.1 sqft)	2100 X 2000 mm
WINTER GARDEN	7.27 sqm (78.25 sqft)	4434 X 1480 mm

APARTMENT 32

TOTAL INTERNAL AREA	81.27 sqm / 874.78 sqft	
KITCHEN	8.4 sqm (90.4 sqft)	3842 X 2245 mm
LIVING ROOM	18.7 sqm (201.3 sqft)	4919 X 3842 mm
MASTER BEDROOM	15.1 sqm (162.5 sqft)	4526 X 3358 mm
EN SUITE	3.0 sqm (32.3 sqft)	2100 X 1500 mm
BEDROOM TWO	12.9 sqm (138.9 sqft)	3797 X 3496 mm
BATHROOM	4.1 sqm (44.1 sqft)	2100 X 2100 mm
WINTER GARDEN	7.27 sqm (78.25 sqft)	4354 X 1480 mm



- 1 Bedroom Apartment
- 2 Bedroom Apartment

For terms and conditions please see page 50.
Total internal areas exclude gardens, balconies, terraces and winter gardens.

FLOOR NO 07



APARTMENT 34, 39

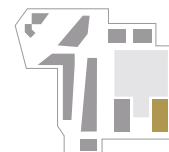
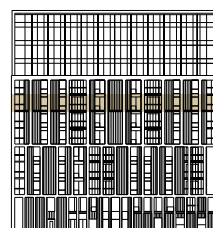
TOTAL INTERNAL AREA	50.1 sqm / 539.27 sqft	
KITCHEN	10.6 sqm (114.1 sqft)	4550 X 2320 mm
LIVING ROOM	13.4 sqm (144.2 sqft)	4550 X 2980 mm
MASTER BEDROOM	12.4 sqm (133.5 sqft)	3595 X 3505 mm
BATHROOM	4 sqm (43.1 sqft)	2113 X 2000 mm
WINTER GARDEN	5.34 sqm (57.48 sqft)	2953 X 1655 mm

APARTMENT 35, 38

TOTAL INTERNAL AREA	81.26 sqm / 874.68 sqft	
KITCHEN	8.7 sqm (93.6 sqft)	3842 X 2320 mm
LIVING ROOM	18.4 sqm (198.1 sqft)	4844 X 3842 mm
MASTER BEDROOM	15.0 sqm (161.5 sqft)	4526 X 3358 mm
EN SUITE	3.0 sqm (32.38 sqft)	2100 X 1500 mm
BEDROOM TWO	12.9 sqm (139.9 sqft)	3797 X 3497 mm
BATHROOM	4.1 sqm (44.6 sqft)	2100 X 2100 mm
WINTER GARDEN	7.27 sqm (78.25 sqft)	4444 X 1525 mm

APARTMENT 36, 37

TOTAL INTERNAL AREA	80.01 sqm / 861.22 sqft	
KITCHEN / LIVING ROOM	28.3 sqm (304.6 sqft)	5500 X 5195 mm
MASTER BEDROOM	12.7 sqm (136.7 sqft)	3975 X 3250 mm
EN SUITE	3.2 sqm (34.4 sqft)	2350 X 1500 mm
BEDROOM TWO	12.6 sqm (135.6 sqft)	4325 X 2750 mm
BATHROOM	4.0 sqm (43.1 sqft)	2100 X 2000 mm
WINTER GARDEN	7.27 sqm (78.25 sqft)	4444 X 1525 mm



- 1 Bedroom Apartment
- 2 Bedroom Apartment

For terms and conditions please see page 50.
Total internal areas exclude gardens, balconies, terraces and winter gardens.

FLOOR NO 08



APARTMENT 40, 45

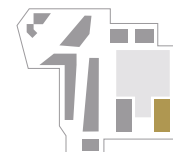
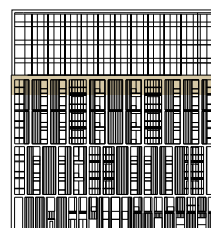
TOTAL INTERNAL AREA	50.1 sqm / 539.27 sqft	
KITCHEN	10.6 sqm (114.1 sqft)	4550 X 2320 mm
LIVING ROOM	13.4 sqm (144.2 sqft)	4550 X 2980 mm
MASTER BEDROOM	12.4 sqm (133.5 sqft)	3595 X 3505 mm
BATHROOM	4 sqm (43.1 sqft)	2113 X 2000 mm
WINTER GARDEN	5.34 sqm (57.48 sqft)	2953 X 1655 mm

APARTMENT 41, 44

TOTAL INTERNAL AREA	80.61 sqm / 867.68 sqft	
KITCHEN	8.4 sqm (90.4 sqft)	3842 X 2245 mm
LIVING ROOM	18.7 sqm (201.3 sqft)	4919 X 3842 mm
MASTER BEDROOM	14.3 sqm (153.9 sqft)	4526 X 3358 mm
EN SUITE	3.0 sqm (32.3 sqft)	2100 X 1495 mm
BEDROOM TWO	12.9 sqm (138.9 sqft)	3797 X 3496 mm
BATHROOM	4.1 sqm (44.1 sqft)	2100 X 2100 mm
WINTER GARDEN	7.27 sqm (78.25 sqft)	4444 X 1525 mm

APARTMENT 42, 43

TOTAL INTERNAL AREA	79.15 sqm / 851.96 sqft	
KITCHEN / LIVING ROOM	28.3 sqm (304.6 sqft)	5500 X 5195 mm
MASTER BEDROOM	12.7 sqm (136.7 sqft)	3975 X 3250 mm
EN SUITE	4.6 sqm (49.5 sqft)	3250 X 1500 mm
BEDROOM TWO	12.8 sqm (137.8 sqft)	4325 X 2750 mm
BATHROOM	4.0 sqm (43.1 sqft)	2100 X 2000 mm
WINTER GARDEN	7.27 sqm (78.25 sqft)	4444 X 1525 mm



- 1 Bedroom Apartment
- 2 Bedroom Apartment

For terms and conditions please see page 50.
Total internal areas exclude gardens, balconies, terraces and winter gardens.



CGI is indicative only



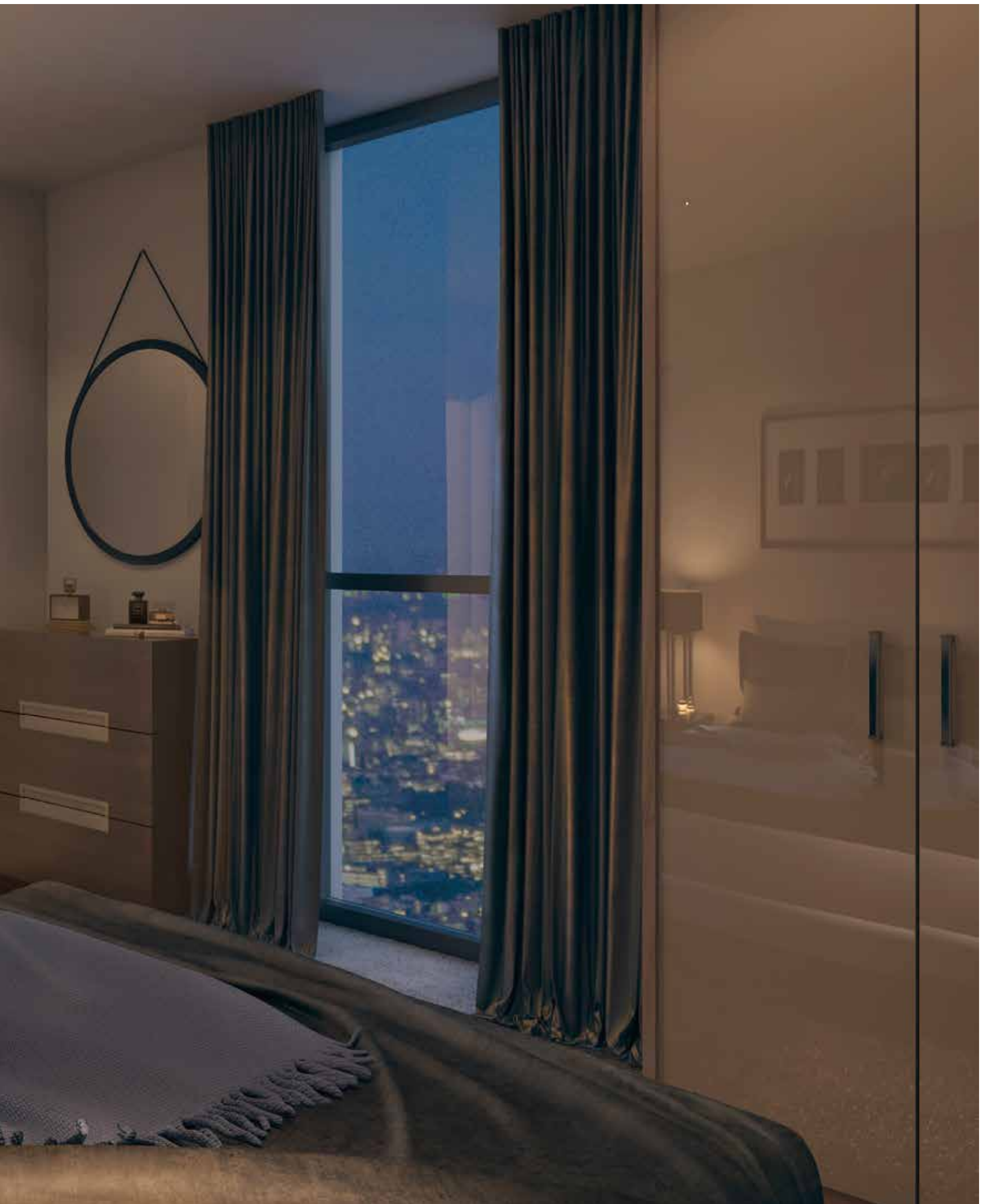


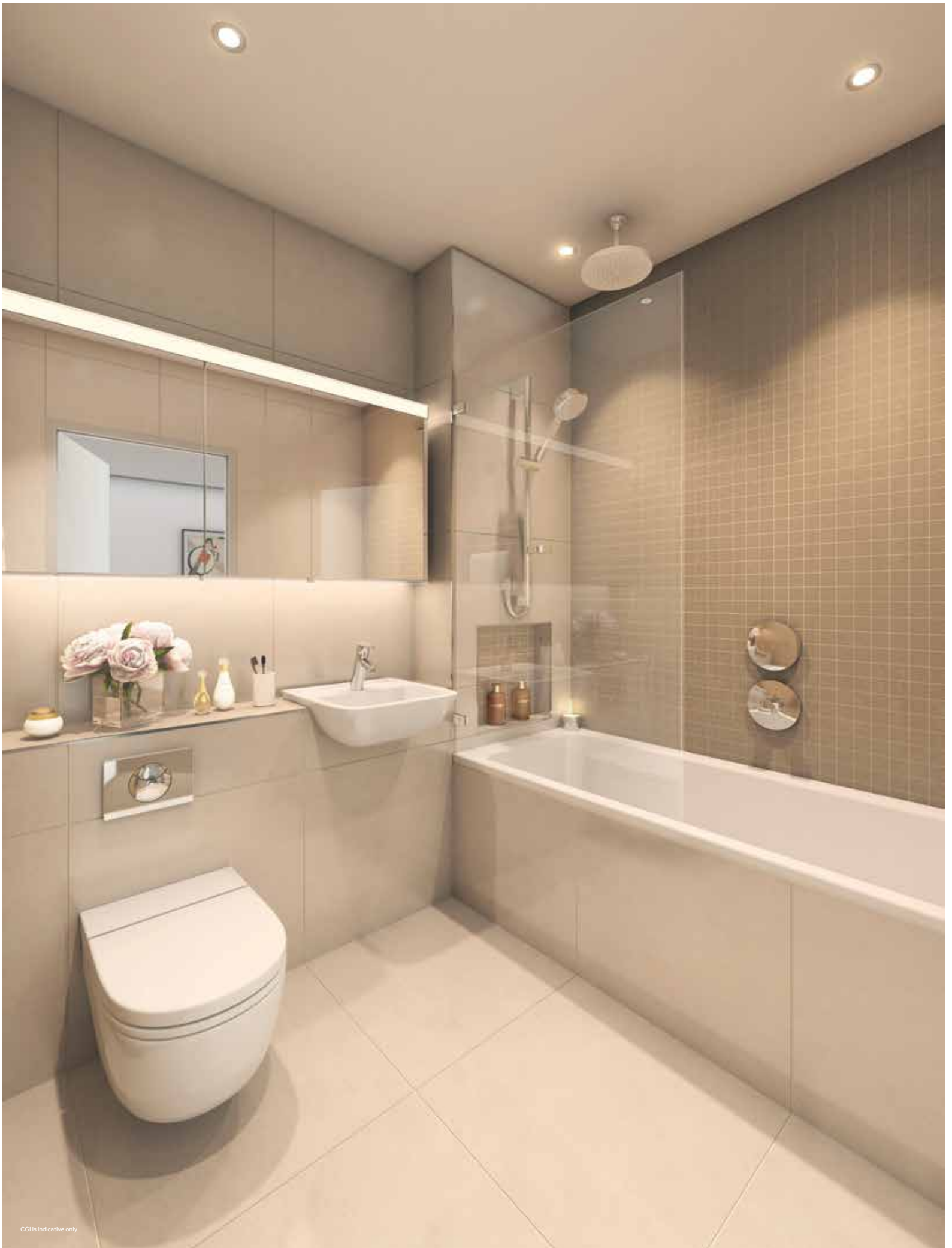
CGI is indicative only





CGI is indicative only





CGI is indicative only

SPECIFICATION

KITCHEN

- Individually designed kitchen with soft close doors and drawers.
- Glass splash back.
- Integrated single oven and microwave. Combi-oven to studios.
- 5 ring induction hob (plot specific).
- Integrated dishwasher.
- Integrated fridge/freezer.
- Washer/dryer (located in hallway where possible).
- Wall units with integrated lighting below.
- Feature lighting to cabinet niches. **P**
- Compartmentalised waste storage.
- Silestone worktop.
- Silestone breakfast bar. **P**
- Integrated wine chiller. **P**

BATHROOMS AND EN SUITE

- White ceramic semi-recessed basin.
- Chrome basin mixer spout and controls.
- White ceramic wall-mounted WC with soft closing seat and dual flush.
- White acrylic bath in family bathroom.
- Shower in master en suite.
- Overhead and hand-held shower in bathroom and en suite.
- Glass shower screens.
- Full height tiling to walls in bathroom and en suite.
- Premium tiling to bathroom and en suite. **P**
- Underfloor heating.
- Towel radiator.
- Mirrored vanity cabinet with shaver socket and integrated feature lighting.

JOINERY

- Painted veneered internal doors to habitable rooms.
- Designer door furniture.
- Fitted wardrobe to master bedroom.
- Timber veneered front door.
- Curtain recesses. **P**

P Premium apartments only

WALL AND FLOOR FINISHES

- Soft white painted plasterboard walls and ceilings.
- Engineered timber floor to kitchen/living/dining room and hallway.
- Fitted carpet to bedroom(s).
- Full height tiling to bathroom and en suite.
- Increased ceiling heights. **P**

WINDOWS AND BALCONIES

- Triple glazed windows with opening doors to balconies, winter gardens and terraces.
- Decked flooring to balconies, terraces and winter gardens (where applicable).

MECHANICAL SYSTEMS

- Underfloor heating throughout.
- Mechanical ventilation system.
- Ceiling mounted smoke detectors.

ELECTRICAL AND LIGHTING

- 13-amp circuits throughout.
- 5-amp circuits (room specific). **P**
- Metal finish to all visible sockets and switch plates.
- Metal finish to all light switches.
- Low energy, low maintenance lighting scheme using LED, low voltage and fluorescent fittings.
- TV/FM/DAB/Data Points to living room and bedroom(s).

SECURITY

- All apartments have video entry systems.
- CCTV to communal internal and external areas.
- Electronic controlled access to exterior doors.

GENERAL

- Concierge service.
- Gym – private residents only.
- Secure cycle storage.
- Lift to all floors.
- Refuse storage area.



These details are intended to give a general indication of the proposed specification. The developer operates a policy of continuous product development and reserves the right to alter any part of the development specification at any time. Where brands are specified the developer reserves the right to replace the brand with another of equal quality or better.



PREMIUM COLLECTION

FLOOR NO 09



PREMIUM COLLECTION

APARTMENT 46

TOTAL INTERNAL AREA 97.49 sqm / 1049.37 sqft

KITCHEN	8.5 sqm (91.5 sqft)	3724 X 2270 mm
LIVING ROOM	26.7 sqm (287.4 sqft)	5104 X 4850 mm
MASTER BEDROOM	15.3 sqm (164.7 sqft)	4658 X 2750 mm
EN SUITE	3.5 sqm (37.7 sqft)	2100 X 1775 mm
BEDROOM TWO	11.5 sqm (123.8 sqft)	3417 X 3250 mm
BEDROOM THREE	10.5 sqm (113.0 sqft)	3421 X 2835 mm
BATHROOM	5.2 sqm (56.0 sqft)	2900 X 2000 mm
TERRACE	26.15 sqm (281.48 sqft)	8763 X 3009 mm

APARTMENT 47

TOTAL INTERNAL AREA 86.58 sqm / 931.94 sqft

KITCHEN	9.7 sqm (104.4 sqft)	4635 X 2095 mm
LIVING ROOM	29.3 sqm (315.4 sqft)	5272 X 5200 mm
MASTER BEDROOM	13.4 sqm (144.2 sqft)	4126 X 3300 mm
EN SUITE	5.7 sqm (61.4 sqft)	2505 X 2116 mm
BEDROOM TWO	11.7 sqm (125.9 sqft)	4260 X 2785 mm
BATHROOM	4.0 sqm (43.1 sqft)	2100 X 2000 mm
TERRACE	17.49 sqm (188.23 sqft)	6000 X 3009 mm

APARTMENT 48

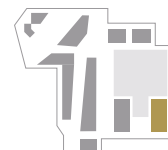
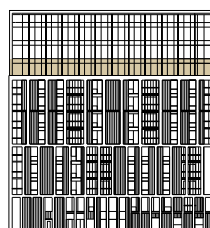
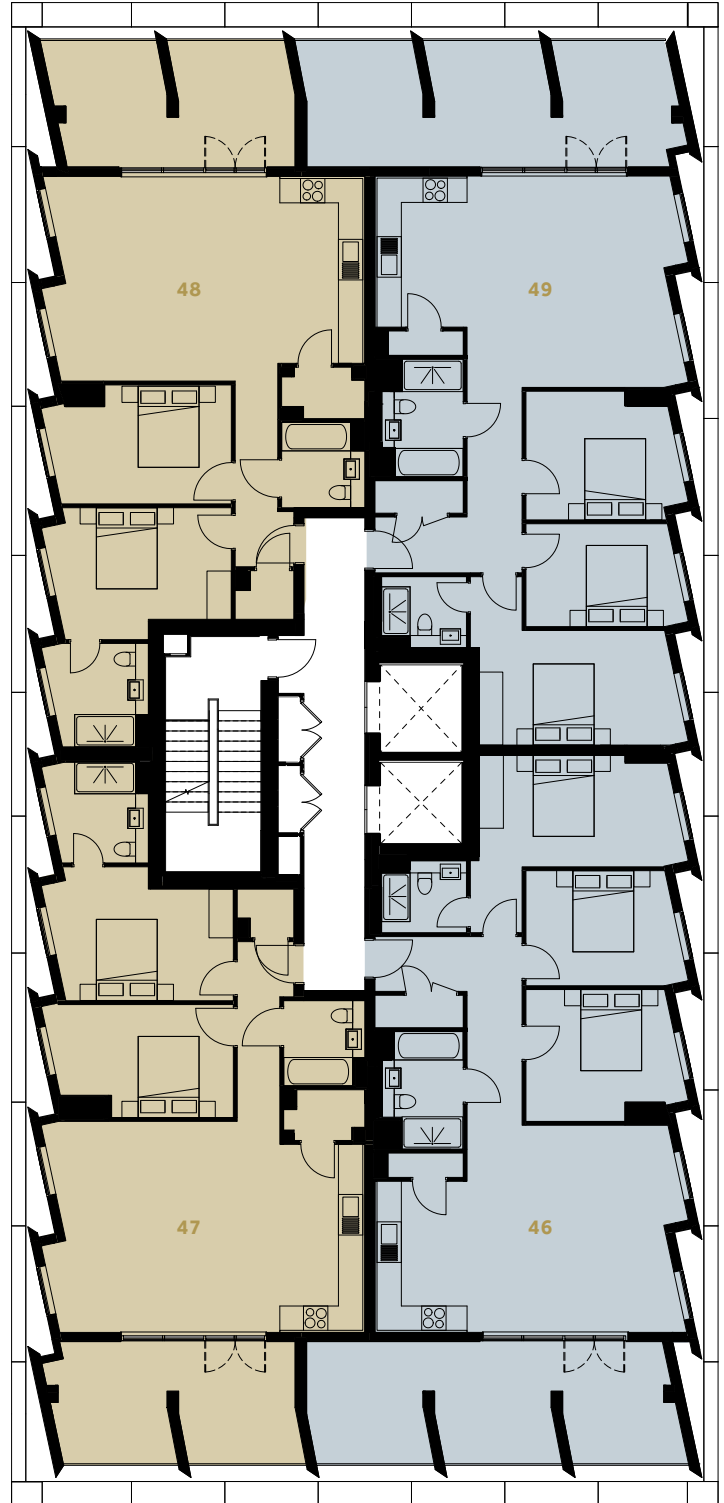
TOTAL INTERNAL AREA 86.34 sqm / 929.36 sqft

KITCHEN	9.9 sqm (106.6 sqft)	4606 X 2145 mm
LIVING ROOM	28.0 sqm (301.4 sqft)	5222 X 5042 mm
MASTER BEDROOM	13.1 sqm (141.0 sqft)	4088 X 3250 mm
EN SUITE	5.8 sqm (62.4 sqft)	2555 X 2096 mm
BEDROOM TWO	12.3 sqm (132.4 sqft)	4126 X 2932 mm
BATHROOM	4.1 sqm (44.1 sqft)	2110 X 2050 mm
TERRACE	17.87 sqm (192.35 sqft)	5612 X 3009 mm

APARTMENT 49

TOTAL INTERNAL AREA 97.95 sqm / 1054.32 sqft

KITCHEN	8.5 sqm (91.5 sqft)	3724 X 2270 mm
LIVING ROOM	27.2 sqm (292.8 sqft)	5209 X 4798 mm
MASTER BEDROOM	15.5 sqm (166.8 sqft)	4793 X 2825 mm
EN SUITE	3.4 sqm (36.6 sqft)	2101 X 1750 mm
BEDROOM TWO	11.3 sqm (121.6 sqft)	3499 X 3170 mm
BEDROOM THREE	9.5 sqm (102.3 sqft)	3486 X 2535 mm
BATHROOM	5.2 sqm (56.0 sqft)	2900 X 2000 mm
TERRACE	27.48 sqm (295.79 sqft)	8861 X 3008 mm



- 2 Bedroom Apartment
- 3 Bedroom Apartment

For terms and conditions please see page 50.
Total internal areas exclude gardens, balconies, terraces and winter gardens.

FLOOR № 10



PREMIUM COLLECTION

APARTMENT 50

TOTAL INTERNAL AREA 97.49 sqm / 1049.37 sqft

KITCHEN	8.5 sqm (91.5 sqft)	3724 X 2270 mm
LIVING ROOM	26.7 sqm (287.4 sqft)	4848 X 5104 mm
MASTER BEDROOM	15.3 sqm (164.7 sqft)	4658 X 2750 mm
EN SUITE	3.5 sqm (37.7 sqft)	2090 X 1775 mm
BEDROOM TWO	11.5 sqm (123.8 sqft)	3417 X 3250 mm
BEDROOM THREE	10.5 sqm (113.0 sqft)	3421 X 2835 mm
BATHROOM	5.2 sqm (56.0 sqft)	2900 X 2000 mm
WINTER GARDEN	15 sqm (161.46 sqft)	9096 X 1738 mm

APARTMENT 51

TOTAL INTERNAL AREA 86.58 sqm / 931.94 sqft

KITCHEN	9.7 sqm (104.4 sqft)	4527 X 2095 mm
LIVING ROOM	29.3 sqm (315.4 sqft)	5272 X 5200 mm
MASTER BEDROOM	13.4 sqm (144.2 sqft)	4126 X 3300 mm
EN SUITE	5.7 sqm (61.4 sqft)	2480 X 2116 mm
BEDROOM TWO	11.7 sqm (125.9 sqft)	4264 X 2785 mm
BATHROOM	4.0 sqm (43.1 sqft)	2100 X 2000 mm
WINTER GARDEN	10.12 sqm (108.93 sqft)	5743 X 1738 mm

APARTMENT 52

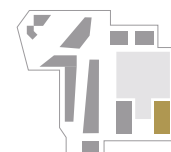
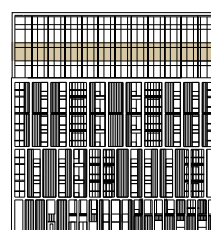
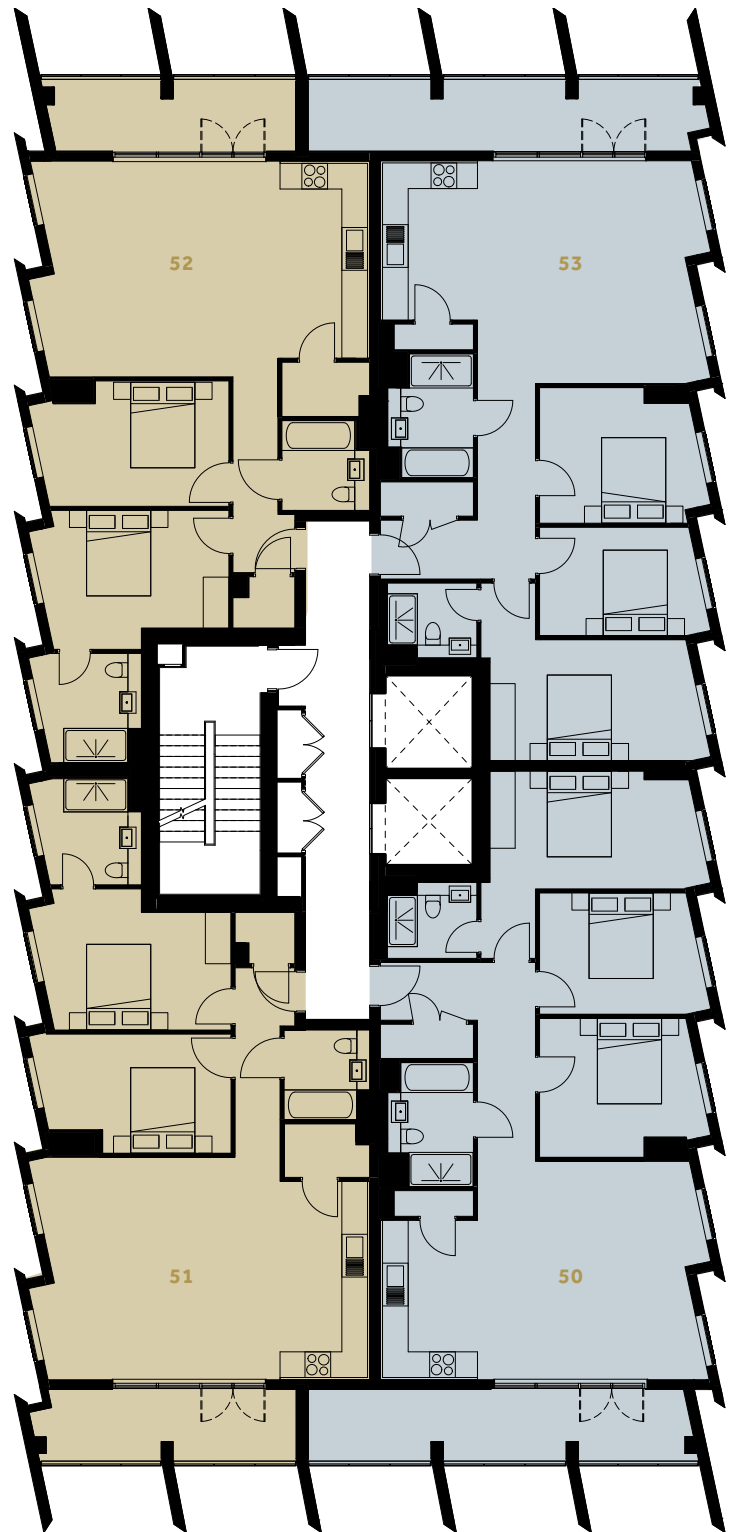
TOTAL INTERNAL AREA 86.34 sqm / 929.36 sqft

KITCHEN	9.9 sqm (106.6 sqft)	4606 X 2145 mm
LIVING ROOM	28.0 sqm (301.4 sqft)	5222 X 5032 mm
MASTER BEDROOM	13.1 sqm (141.0 sqft)	4091 X 3250 mm
EN SUITE	5.8 sqm (62.4 sqft)	2555 X 2099 mm
BEDROOM TWO	12.3 sqm (132.4 sqft)	4189 X 2932 mm
BATHROOM	4.1 sqm (44.1 sqft)	2100 X 2050 mm
WINTER GARDEN	9.73 sqm (104.73 sqft)	5610 X 1733 mm

APARTMENT 53

TOTAL INTERNAL AREA 97.95 sqm / 1054.32 sqft

KITCHEN	8.5 sqm (91.5 sqft)	3724 X 2270 mm
LIVING ROOM	27.2 sqm (292.8 sqft)	5209 X 4848 mm
MASTER BEDROOM	15.5 sqm (166.8 sqft)	4587 X 2825 mm
EN SUITE	3.5 sqm (37.7 sqft)	2090 X 1750 mm
BEDROOM TWO	11.3 sqm (121.6 sqft)	3511 X 3183 mm
BEDROOM THREE	9.5 sqm (102.3 sqft)	3486 X 2535 mm
BATHROOM	5.2 sqm (56 sqft)	2900 X 2000 mm
WINTER GARDEN	15.17 sqm (163.29 sqft)	8972 X 1741 mm



- 2 Bedroom Apartment
- 3 Bedroom Apartment

For terms and conditions please see page 50.
Total internal areas exclude gardens, balconies, terraces and winter gardens.

FLOOR NO 11



PREMIUM COLLECTION

APARTMENT 54

TOTAL INTERNAL AREA 97.49 sqm / 1049.37 sqft

KITCHEN	8.5 sqm (91.5 sqft)	3724 X 2270 mm
LIVING ROOM	26.7 sqm (287.4 sqft)	4848 X 5104 mm
MASTER BEDROOM	15.3 sqm (164.7 sqft)	4658 X 2750 mm
EN SUITE	3.5 sqm (37.7 sqft)	2090 X 1775 mm
BEDROOM TWO	11.5 sqm (123.8 sqft)	3417 X 3250 mm
BEDROOM THREE	10.5 sqm (113.0 sqft)	3421 X 2835 mm
BATHROOM	5.2 sqm (56.0 sqft)	2900 X 2000 mm
WINTER GARDEN	15 sqm (161.46 sqft)	9096 X 1738 mm

APARTMENT 55

TOTAL INTERNAL AREA 86.58 sqm / 931.94 sqft

KITCHEN	9.7 sqm (104.4 sqft)	4527 X 2095 mm
LIVING ROOM	29.3 sqm (315.4 sqft)	5272 X 5200 mm
MASTER BEDROOM	13.4 sqm (144.2 sqft)	4126 X 3300 mm
EN SUITE	5.7 sqm (61.4 sqft)	2480 X 2116 mm
BEDROOM TWO	11.7 sqm (125.9 sqft)	4264 X 2785 mm
BATHROOM	4.0 sqm (43.1 sqft)	2100 X 2000 mm
WINTER GARDEN	10.12 sqm (108.93 sqft)	5743 X 1738 mm

APARTMENT 56

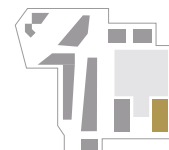
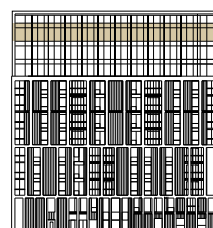
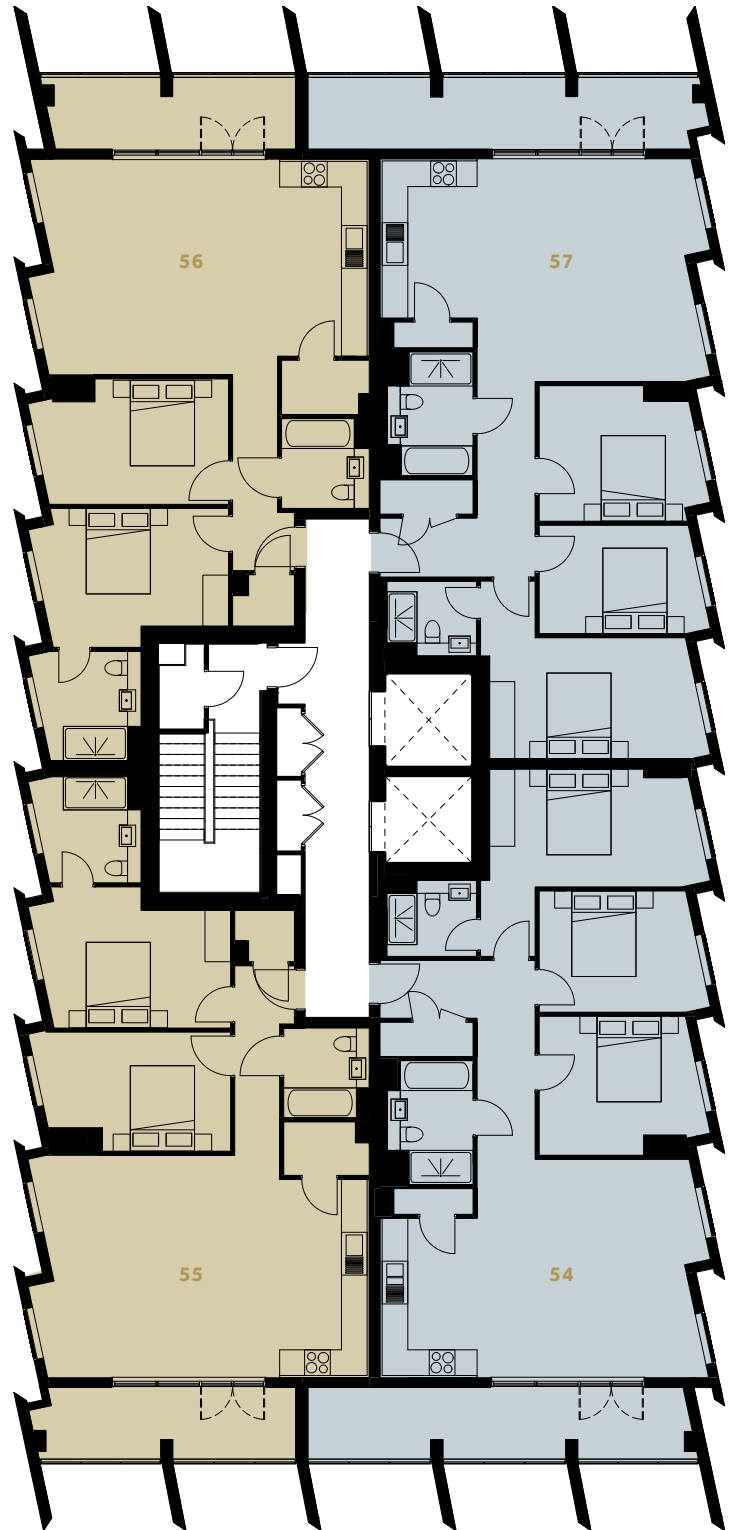
TOTAL INTERNAL AREA 86.34 sqm / 929.36 sqft

KITCHEN	9.9 sqm (106.6 sqft)	4606 X 2145 mm
LIVING ROOM	28.0 sqm (301.4 sqft)	5222 X 5032 mm
MASTER BEDROOM	13.1 sqm (141.0 sqft)	4091 X 3250 mm
EN SUITE	5.8 sqm (62.4 sqft)	2555 X 2099 mm
BEDROOM TWO	12.3 sqm (132.4 sqft)	4189 X 2932 mm
BATHROOM	4.1 sqm (44.1 sqft)	2100 X 2050 mm
WINTER GARDEN	9.73 sqm (104.73 sqft)	5610 X 1733 mm

APARTMENT 57

TOTAL INTERNAL AREA 97.95 sqm / 1054.32 sqft

KITCHEN	8.5 sqm (91.5 sqft)	3724 X 2270 mm
LIVING ROOM	27.2 sqm (292.8 sqft)	5209 X 4848 mm
MASTER BEDROOM	15.5 sqm (166.8 sqft)	4587 X 2825 mm
EN SUITE	3.5 sqm (37.7 sqft)	2090 X 1750 mm
BEDROOM TWO	11.3 sqm (121.6 sqft)	3511 X 3183 mm
BEDROOM THREE	9.5 sqm (102.3 sqft)	3486 X 2535 mm
BATHROOM	5.2 sqm (56 sqft)	2900 X 2000 mm
WINTER GARDEN	15.17 sqm (163.29 sqft)	8972 X 1741 mm



- 2 Bedroom Apartment
- 3 Bedroom Apartment

For terms and conditions please see page 50.
Total internal areas exclude gardens, balconies, terraces and winter gardens.

BATTERSEA EXCHANGE



CGI is indicative only





CGIs indicative only





CGI is indicative only



TAYLOR WIMPEY CENTRAL LONDON

**CREATING SIGNATURE DEVELOPMENTS IN CENTRAL LONDON.
TAYLOR WIMPEY CENTRAL LONDON IS PART OF TAYLOR
WIMPEY PLC – ONE OF THE UK'S LARGEST RESIDENTIAL
DEVELOPERS AND A FTSE 100 LISTED COMPANY.**

We feel that being part of a recognised and respected company offers our customers stability and confidence in delivery, but at the same time our specialist Central London arm is dedicated to creating unique developments suited to the central London market where attention to detail and a unique service is key.

We believe this combination enables us to offer a personalised service to our varying range of customers all of whom have different requirements for where they want to call their own. We recognise everyone is different

and seek to reflect this in our bespoke development portfolio and create unique buildings where attention to detail is paramount.

We realise that sometimes it is not easy to choose your perfect home or investment, so we provide a dedicated customer service throughout the process to help you make that choice. Our goal is that you are delighted that you chose Taylor Wimpey Central London.



BATTERSEA EXCHANGE





A DEVELOPER OF CHOICE

We know that buying a home is a significant financial and personal investment. We aim to make the whole process as simple and straightforward as possible. The Taylor Wimpey Central London Customer Journey is a set of procedures designed to ensure all customers have the best possible experience, from reserving their home or investment right through to aftercare once the purchase is completed. We pride ourselves on providing our customers with a personalised professional service on all aspects of their purchase. All our homes come with a two-year Taylor Wimpey Warranty and a 10-year Buildmark cover from the National House Building Council. We are a customer-focused business with a firm commitment to build homes of the highest quality.

Left FiftySevenEast
Opposite Above St Dunstan's Court
Opposite Below Regency Mews



PORTFOLIO

DUBAI, UAE OFFICE

Empire Heights
Podium Floor, Business Bay
PO BOX 124854
Tel +971 4 446 2000 Fax
+971 4 446 2099

JEDDAH, KSA OFFICE

Hasid Co. Building
PO Box 50405
Jeddah 21533, KSA
Tel +966 12 2067025
Fax +966 12 2067725

DLD Registration No. 660
DED Trade License No 574154

www.oryxworldportfolio.com

BATTERSEA EXCHANGE

FLOOR PLANS

Floor plans are intended to give a general indication of the proposed floor layout only and apartment layouts provide approximate measurements only. Dimensions are for guidance only and all measurements and areas may vary within a tolerance of 5%. Dimensions are not intended to be used for carpet sizes, appliance space or items of furniture. Total areas are provided as GIA under the RICS measuring practice.

Kitchen and bathroom layouts are indicative only and are subject to change. Furniture and landscaping is shown for illustrative purposes only. All images and dimensions are not intended to form part of any contract or warranty. All images used are for illustrative purposes only. Individual features such as windows, brick and other materials' colours may vary, as may heating and electrical layouts.

DISCLAIMER

The information contained in this, and accompanying documents, is provided for general guidance only and does not form the whole or part of any offer, contract or warranty. These particulars should not be relied upon as accurately describing any of the specific matters described by any order under the Consumer Protection from Unfair Trading Regulations 2008. Customers are strongly advised to contact a Taylor Wimpey Central London representative for further details and to satisfy themselves as to their accuracy. All areas and dimensions have been taken from architects plans prior to construction therefore whilst the information is believed to be correct its accuracy cannot be guaranteed and does not form part of any contract. They are not intended to be used for carpet sizes, appliance sizes or items of furniture. Kitchen and kitchen appliance layouts are indicative only. Please refer to the sales consultant for detailed layouts of particular apartments. Purchasers must therefore rely on their own inspection to verify any information provided. Your attention is drawn to the fact that it may not be possible to obtain the products as referred to in the specification. In such cases a similar alternative will be provided and Taylor Wimpey Central London reserve the right to make these changes as required. Images are representative only, maps are not to scale and show approximate locations only. Computer Generated Images, floor plans and room layouts are indicative only, based on information correct at the time of going to print and may therefore be subject to review and optimisation. Battersea Exchange is a marketing name and will not necessarily form part of the approved postal address.

Details true and correct as of 05/2015/v1