



PALACE VIEW

LAMBETH BRIDGE
LONDON



PALACE VIEW

LAMBETH BRIDGE
LONDON

Palace View is an exclusive boutique development situated opposite the magnificent Lambeth Palace in a historic location embodying over 800 years of history.

The 55 beautifully finished apartments offer views over the River Thames and London's most famous landmark, the Palace of Westminster, more affectionately known as the Houses of Parliament.



AWE-INSPIRING VIEWS

Palace View enjoys a spectacular outlook over Lambeth Palace, Westminster and beyond.



STYLISH, CONTEMPORARY ARCHITECTURE

Perfectly appointed in a prime central location, Palace View features a graceful, curved brick façade, complemented by striking copper style highlights.

BUCKINGHAM PALACE

GREEN PARK

LAMBETH BRIDGE

ST. JAMES'S PARK

WESTMINSTER ABBEY

WESTMINSTER SCHOOL

HOUSES OF PARLIAMENT



LAMBETH PALACE

BIG BEN

GARDEN MUSEUM

WESTMINSTER BRIDGE

LAMBETH PALACE GARDENS



CENTRAL LONDON MAP

London is home to greatness. From historic landmarks, to world-class cuisine, to the best universities. If one city can claim to have it all, it is London.

HOTELS & FITNESS CLUBS

- 1 The Goring Hotel
- 2 The Lanesborough Hotel
- 3 Mandarin Oriental
- 4 The Dorchester
- 5 Four Seasons
- 6 Brown's Hotel
- 7 Jumeirah Carlton Tower
- 8 The Halkin
- 9 The Berkeley
- 10 Westminster Park Plaza
- 11 Mondrian London
- 12 The Savoy

RESTAURANTS & BARS

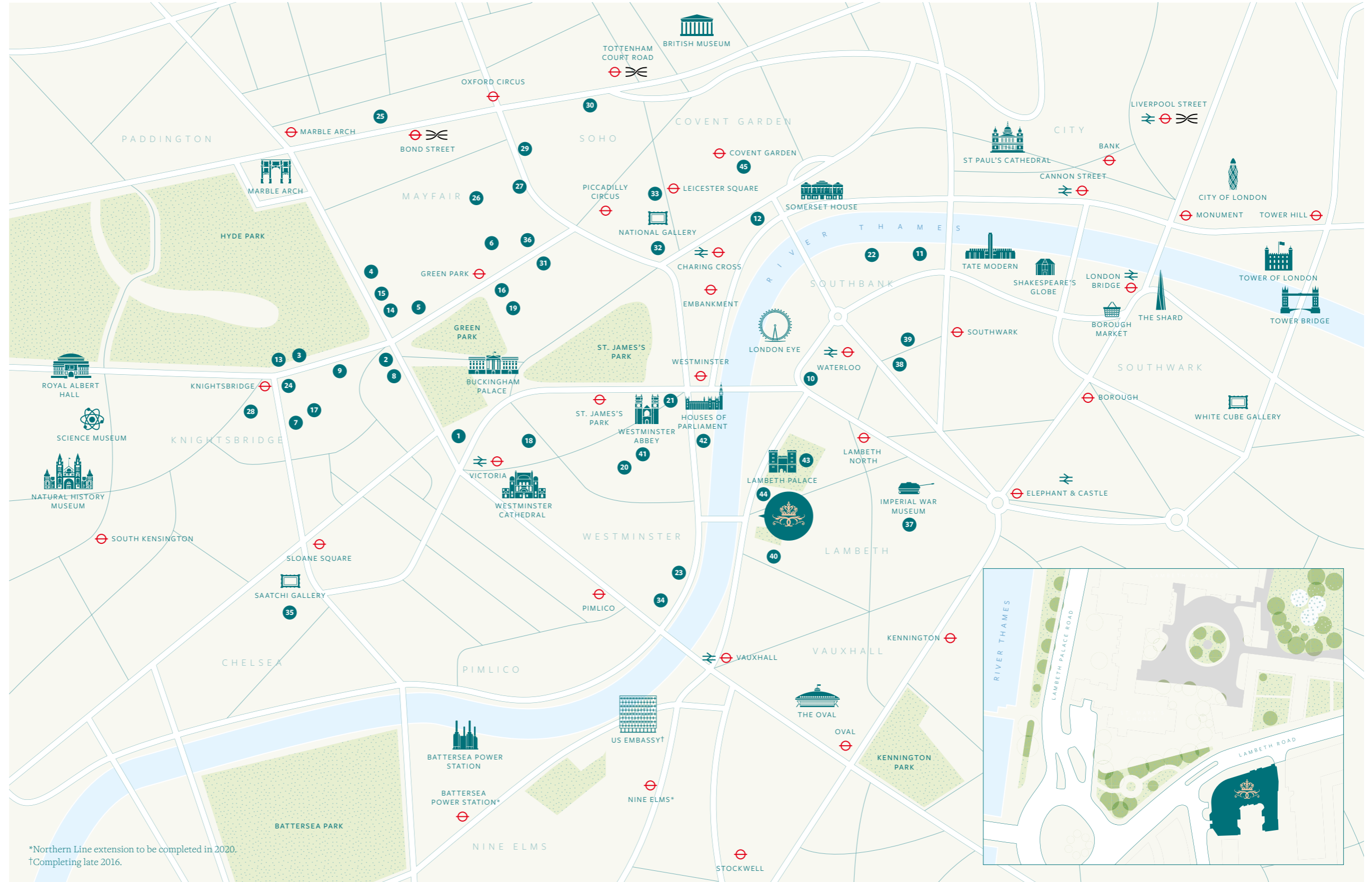
- 13 Dinner by Heston Blumenthal
- 14 Nobu London
- 15 45 Park Lane
- 16 The Wolseley
- 17 Amaya
- 18 Quilon
- 19 Seven Park Place
- 20 Cinnamon Club
- 21 Roux at Parliament Square
- 22 Oxo Tower
- 23 London Sky Bar

RETAIL

- 24 Harvey Nichols
- 25 Selfridges
- 26 New Bond Street
- 27 Regent Street
- 28 Harrods
- 29 Liberty
- 30 Oxford Street
- 31 Fortnum & Mason

CULTURE

- 32 National Gallery
- 33 National Portrait Gallery
- 34 Tate Britain
- 35 Saatchi Gallery
- 36 Royal Academy of Arts
- 37 Imperial War Museum
- 38 The Old Vic
- 39 The Young Vic
- 40 Newport Street Gallery
- 41 Westminster Abbey
- 42 Houses of Parliament
- 43 Lambeth Palace
- 44 The Garden Museum
- 45 The Royal Opera House



*Northern Line extension to be completed in 2020.
 †Completing late 2016.



LONDON, HOME TO GREATNESS

London proudly stakes its claim as the best-loved city on the planet, and rightly so. A unique combination of the old and the new, this is a place where iconic royal palaces sit side by side with contemporary art galleries. A flourishing financial command centre, major fashion capital, and food-lovers' paradise, London also produces some of the world's most outstanding architecture, art and theatre, and is home to a host of prestigious schools and universities.

THE PALACE OF WESTMINSTER

Instantly recognisable for its Gothic turrets and Big Ben clock tower, the Palace of Westminster is perhaps the most iconic building in the world. Known as the Houses of Parliament because it is home to both the House of Commons and the House of Lords, this is the ancient seat of power where the thrilling twists and turns of politics play out each day.



LAMBETH PALACE, 800 YEARS OF HERITAGE

Lambeth Palace is part of London's living history. The London residence of the Archbishop of Canterbury since the 13th century, the palace counts Henry VIII, Elizabeth I, Pope Benedict XVI, and Queen Elizabeth II among its notable visitors. The site was chosen for its proximity to Westminster and the Royal Court, whilst still providing a tranquil place of sanctuary. Nearly 800 years later, its central yet leafy location continues to make it a desirable place to live.

THE RIVER THAMES

Flowing through the heart of the capital's cultural and commercial history, the mighty River Thames has been the lifeblood of London since the city was first settled in Roman times, and continues to play a key role in tourism and trade today. Inspiring by day and dazzling by night, the Thames is surely London's most beloved landmark.





LONDON'S FINEST SHOPPING

Nowhere has shopping quite like London. From trendy boutiques to vintage fashion markets, visitors from all over the world come here looking for a treasured possession or a piece from the latest collections. Synonymous with style and luxury, the city's celebrated department stores like Liberty, Harrods and Selfridges offer the ultimate retail experience, selling the most sought-after brands in everything from designer handbags to haute couture.

RELAX IN REGAL SURROUNDINGS

London's Royal Parks lend the city its uniquely green and leafy feel. Serene spaces for picnics or a leisurely stroll, they're also perfect for more active pursuits like cycling and rollerblading.

St. James's Park is the oldest of the eight Royal Parks and encompasses The Mall and Horse Guards Parade, the setting for spectacular pageants including the annual Trooping the Colour.

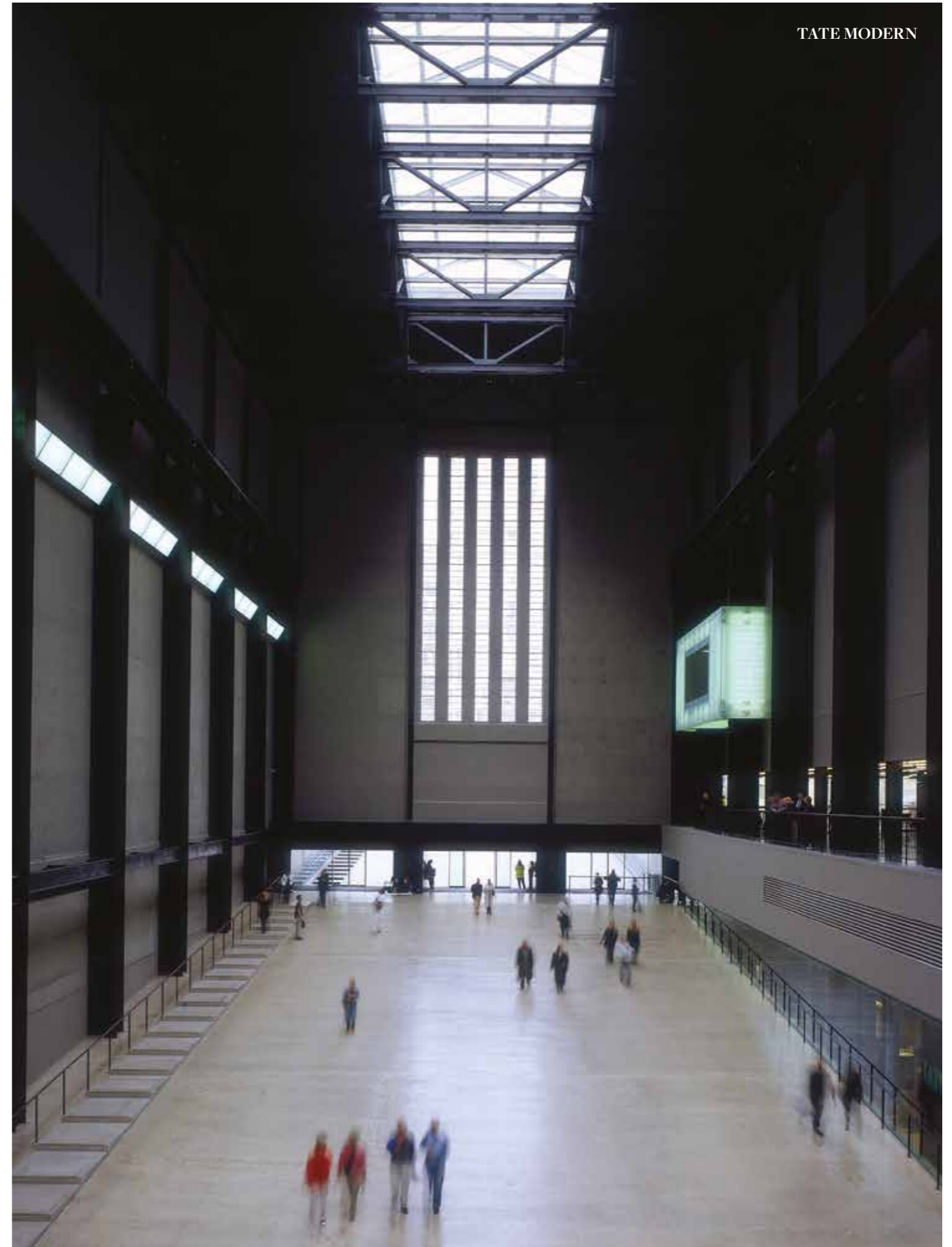
SOVEREIGN SPLENDOUR

Buckingham Palace's grand neoclassical façade is synonymous with London. Bought by George III as a private retreat for his wife Queen Charlotte, today the Palace is the London residence of the Queen, and the centrepiece of Britain's constitutional monarchy. The ornate, gilded State Rooms are furnished and decorated with priceless works of art, and provide a fitting backdrop for the banquets where the Queen and the Duke of Edinburgh receive visiting Heads of State.



A CITY OF CULTURE

London is home to some of the world's biggest cultural attractions. Witness an award-winning production at Covent Garden's iconic Royal Opera House, or experience some of the ground-breaking theatre for which London is renowned. Blockbuster art exhibitions feature regularly at galleries like Tate Modern, the National Gallery and the Royal Academy of Arts, while the incredible treasures on display at the British Museum make it one of the most-visited museums in the world.



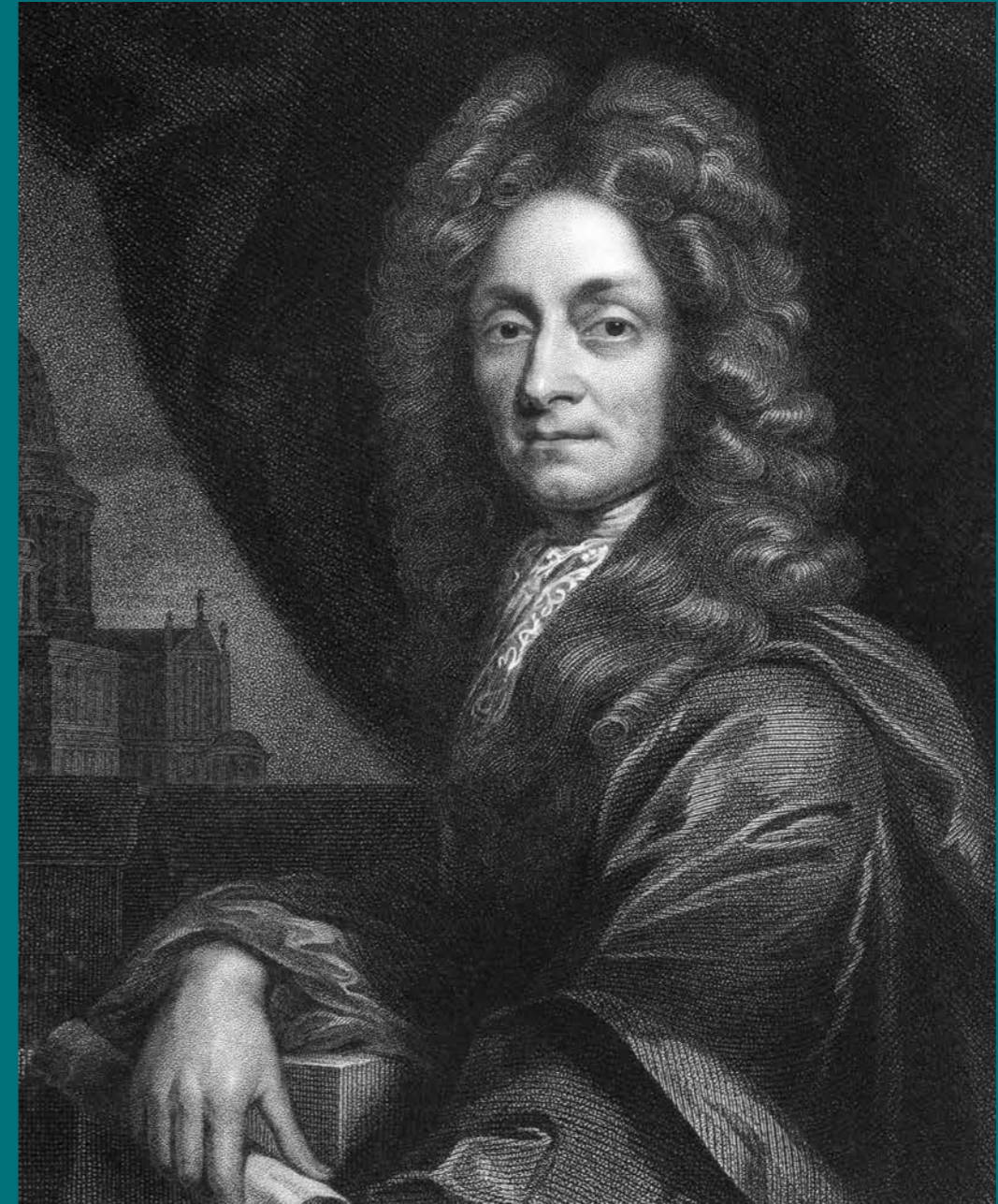
TATE MODERN



WESTMINSTER SCHOOL

FOLLOW IN THE FOOTSTEPS OF THE GREAT AND THE GOOD

Set within the hallowed precincts of Westminster Abbey, Westminster School is one of the country's most prized academic institutions, with a long and distinguished history dating back to the 14th century. Among its impressive roll call of alumni are Sir Christopher Wren, architect of St Paul's Cathedral, Sir Henry Purcell, 17th century composer, countless Oscar-winning actors, and a plethora of political leaders, including no fewer than seven Prime Ministers.



SIR CHRISTOPHER WREN

Sir Christopher Wren (1632–1723) attended Westminster School between 1641 and 1646. Designer, astronomer, and the greatest English architect of his time, Wren designed 53 London churches, the most famous of these being St Paul's Cathedral. Wren was also a founder of the Royal Society, and received a knighthood from King Charles II in 1673.

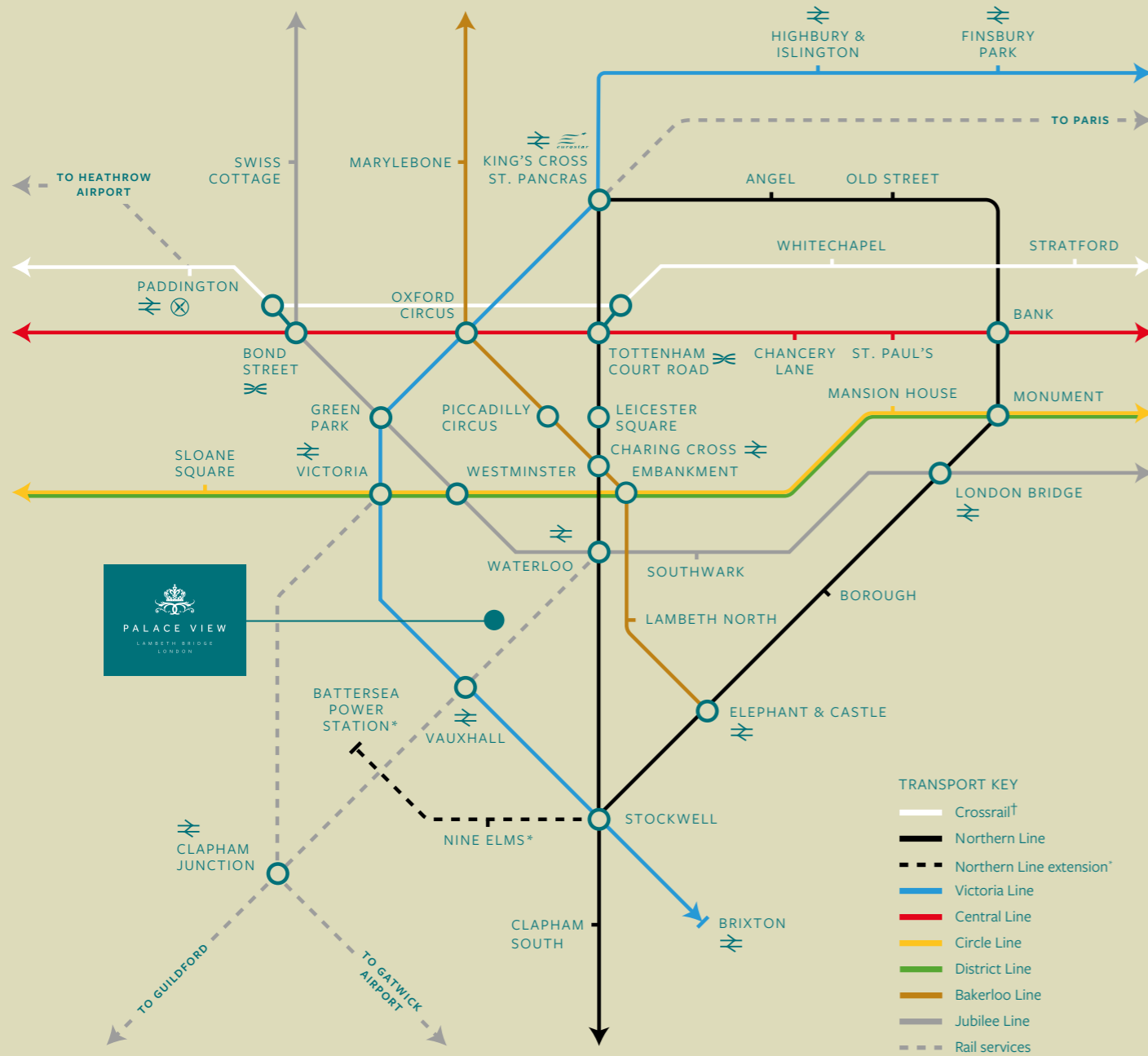
GREAT SEATS OF LEARNING

Some of the world's most prestigious schools and universities are found here in London. Palace View's central location makes it ideally placed to access the many esteemed institutions providing a world-class education.

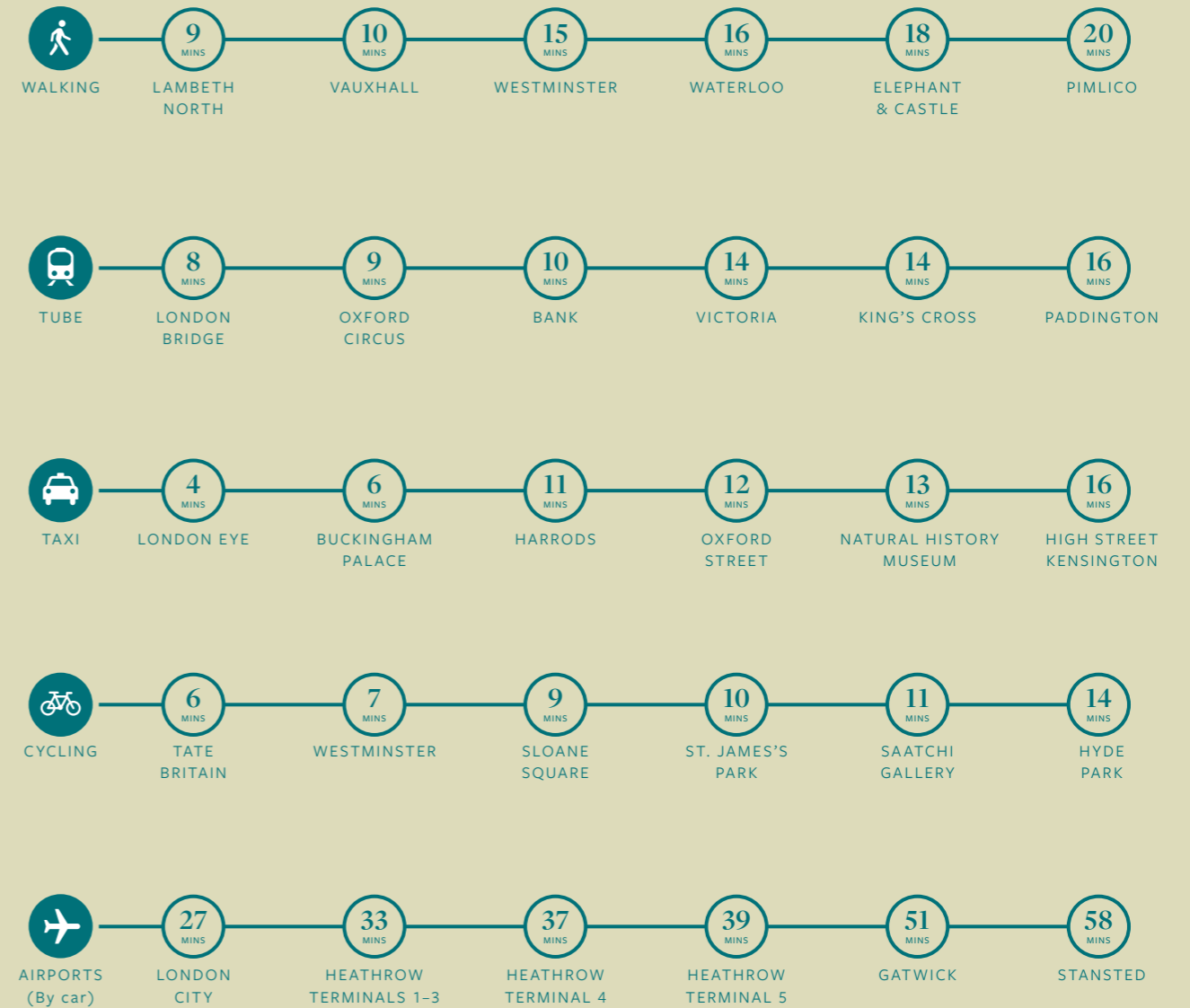


TRAVELLING BY RAIL & UNDERGROUND

Palace View's central location and proximity to major transport hubs means the rest of London can be accessed in minutes. All of London's major airports are an easy journey – taking less than one hour.



JOURNEY TIMES FROM PALACE VIEW



†Crossrail to be completed in 2018.

*Northern Line extension to be completed in 2020.

Map is not to scale and indicative only. Times quoted are approximative and provided by Google Maps and tfl.gov.uk. Tube times calculated from Lambeth North Underground Station.

THE GREATEST INTERIORS

Palace View reflects a desire for the interiors to be in harmony with their surroundings and a consideration of the needs of their inhabitants.



PALACE SUITE LIVING ROOM

COMPUTER-GENERATED IMAGE

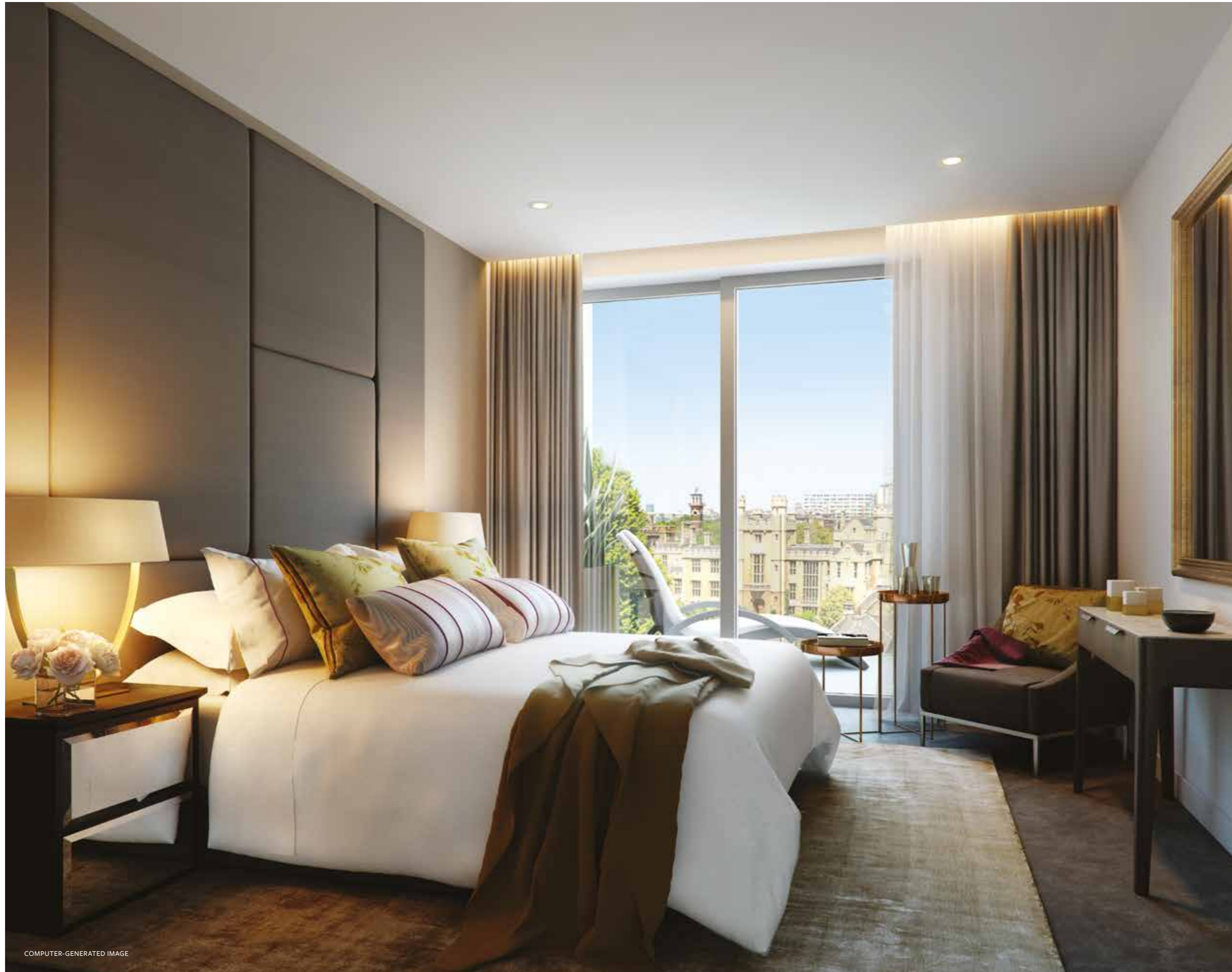


LIVING ROOM

Open-plan interiors have been designed to maximise space and light.



COMPUTER-GENERATED IMAGE



COMPUTER-GENERATED IMAGE

BEDROOM

Warm natural palettes make for a welcoming retreat.

KITCHEN

Seamless spaces and clean lines
create a contemporary feel.



COMPUTER-GENERATED IMAGE

A MORE PERSONAL SERVICE

The boutique scale of Palace View will enable a uniquely personal service from the concierge, on hand to help you with all your needs. All the other amenities you would expect from a luxury apartment building are on offer too, including a fully equipped gym, cinema room, and welcoming residents' lobby.



RESIDENTS' LOBBY

COMPUTER-GENERATED IMAGE



GYM

COMPUTER-GENERATED IMAGE



CINEMA ROOM

COMPUTER-GENERATED IMAGE



COMPUTER-GENERATED IMAGE

BATHROOM
Thoughtfully designed bathrooms feature high quality fixtures and fittings and a modern colour palette.

INSPIRED DESIGN

FARRELLS INTERIOR DESIGN: OUR STARTING POINT WHEN APPROACHING THE INTERIOR DESIGN FOR PALACE VIEW WAS TO LOOK AT THE SETTING, CHARACTER AND MATERIAL EXPRESSION OF THE NEIGHBOURHOOD.

Brick, stone and ceramic detailing enrich the architectural language of the Lambeth area and this inspired our design process.

Palace View reflects our desire for the interiors to be in harmony with their surroundings and a reflection of the needs of their inhabitants. We wanted to create real homes with intelligent layouts and an interior design that goes beyond mere decoration. Materials, lighting, finishes and detailing have to work together to create a calm, serene environment and maximise the use of space.

Palace View interiors are designed for the people that will use them daily. They're also highly personal

and individual; the use of solid materials results in a modern palette featuring whites, warm contemporary timber floors, rich textured vanity units and wood veneers.

We have carefully considered the construction detailing in using these materials to achieve clean lines throughout the interiors which will allow residents to express their own character within each room.

Lighting design plays a key role in the interiors of the Palace View homes as accent and concealed lighting has been integrated in kitchen cabinets, bathroom mirrors and wardrobes interiors.

The interior design philosophy has been continued seamlessly throughout the residents' facilities and all common areas. The entrance lounge, the private screening room, the gym and the lobbies will feel as an exclusive extension of the Palace View homes. Here patterned flooring, upholstered panels, warm tones and a tailored lighting scheme create individual spaces for residents to relax and unwind.

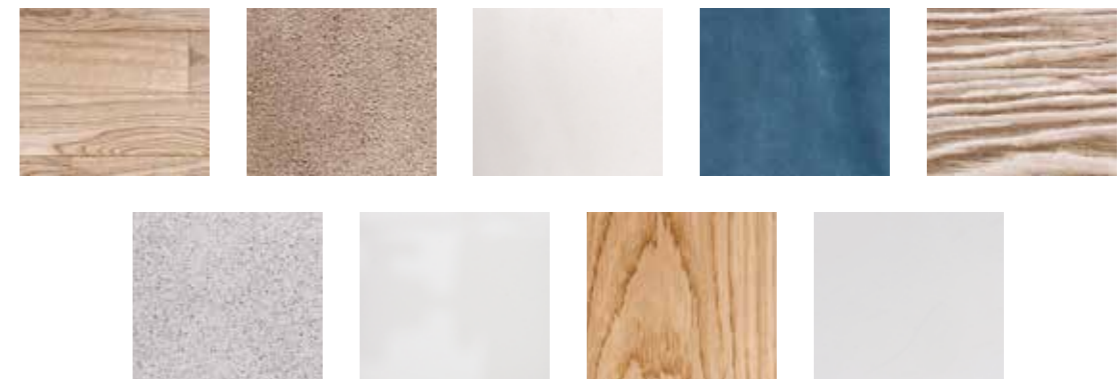
At Palace View, Farrells have created the interior architecture and design of all of the apartments, Palace Suites, common areas and residents' amenities.

FARRELLS

LIGHT PALETTE



DARK PALETTE



PALACE SUITES PALETTE



Colours/materials subject to change, indicative only.

UNEQUALLED SPECIFICATION

THE INTERIORS FOR PALACE VIEW ARE DESIGNED BY THE AWARD-WINNING DESIGN PRACTICE, FARRELLS, WHO HAVE AN IN-DEPTH KNOWLEDGE AND UNDERSTANDING OF LONDON. THEY CREATE HIGH QUALITY ARCHITECTURE WHICH RESPONDS TO THE CONTEXT AND 'PLACE' AND BESPOKE INTERIORS DESIGNED FOR MODERN LIFESTYLES.

KITCHEN

- Bespoke kitchen with stone worktop and glass splashback
- Stainless steel oven
- Induction hob with extractor hood
- Microwave oven
- Integrated fridge/freezer
- Integrated dishwasher
- Freestanding washer/dryer [provided to cupboard]

BATHROOM/EN SUITE

- Duravit sanitaryware
- Hansgrohe fixed showerhead and telescopic hose to bath, adjustable shower head and riser rail to walk-in shower
- Glass shower and bath screen
- Wall-hung mirrored vanity unit
- Shaver socket

BEDROOMS

- Fitted wardrobe to the master bedroom with sliding or hinged doors, automatic lighting and bespoke drawer set

JOINERY

- Veneered interior doors
- Designer door furniture

WALL AND FLOOR FINISHES

- Engineered hardwood flooring to hallway, kitchen/living/dining area
- Carpet to all bedrooms
- High quality porcelain floor and wall tiles to bathroom and en suite
- Painted walls and ceilings

BALCONIES AND TERRACES

- Decking to terrace or balcony
- Glass balustrade with handrail

MECHANICAL SYSTEMS

- Comfort cooling to living area and master bedroom
- Underfloor heating throughout

ELECTRICAL AND LIGHTING

- Downlights throughout
- Brushed stainless steel switch plates
- Timer controlled lighting to common spaces

AV, TELEPHONE, DATA

- BT points to all principal living areas and master bedroom
- Broadband connection instantly available (purchaser subscription required)
- TV points (including Sky+ and Sky HD) to all principal living areas and master bedroom
- Communal satellite dish (customer subscription required)
- Communal TV aerial

SECURITY

- Video door entry system
- Electronic controlled access to building entrance doors and courtyard doors

RESIDENTS' AMENITIES

- Concierge
- Residents' lobby
- Secure underground car parking (details to be confirmed)
- Electric car charging points
- Residents' landscaped courtyard
- Gymnasium
- Cinema room
- Cycle store

For the Palace Suites specification please consult the selling agent.

These details are intended to give a general indication of the proposed specification. The developer operates a policy of continuous product development and reserves the right to alter any part of the development specification at any time. Where brands are specified the developer reserves the right to replace the brand with another of equal quality or better.



PALACE VIEW

LAMBETH BRIDGE
LONDON

FLOOR PLATES



BASEMENT FLOOR

GROUND FLOOR

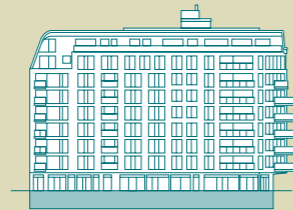
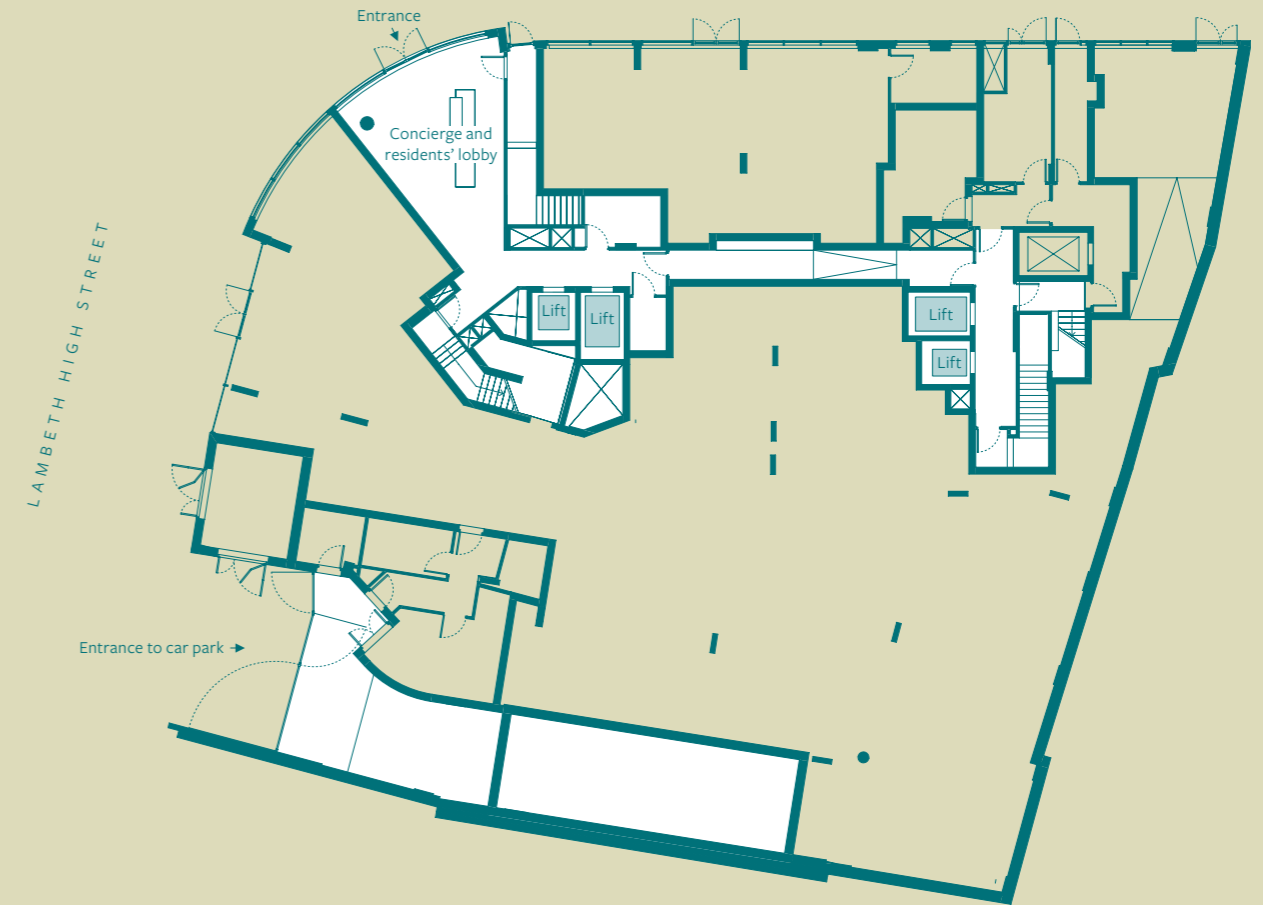


← RIVER THAMES

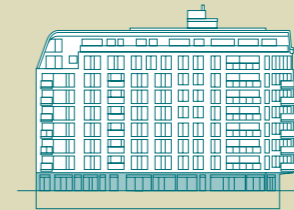
LAMBETH ROAD

← RIVER THAMES

LAMBETH ROAD



LAMBETH ROAD



LAMBETH ROAD

Layout subject to change. For terms and conditions please refer to page 72.

Layout subject to change. For terms and conditions please refer to page 72.

FIRST FLOOR

○ One bedroom apartment ○ Two bedroom apartment ○ Three bedroom apartment

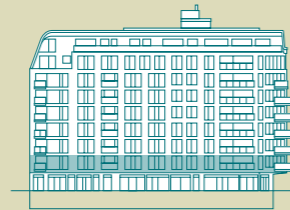


← RIVER THAMES

LAMBETH ROAD



LAMBETH HIGH STREET



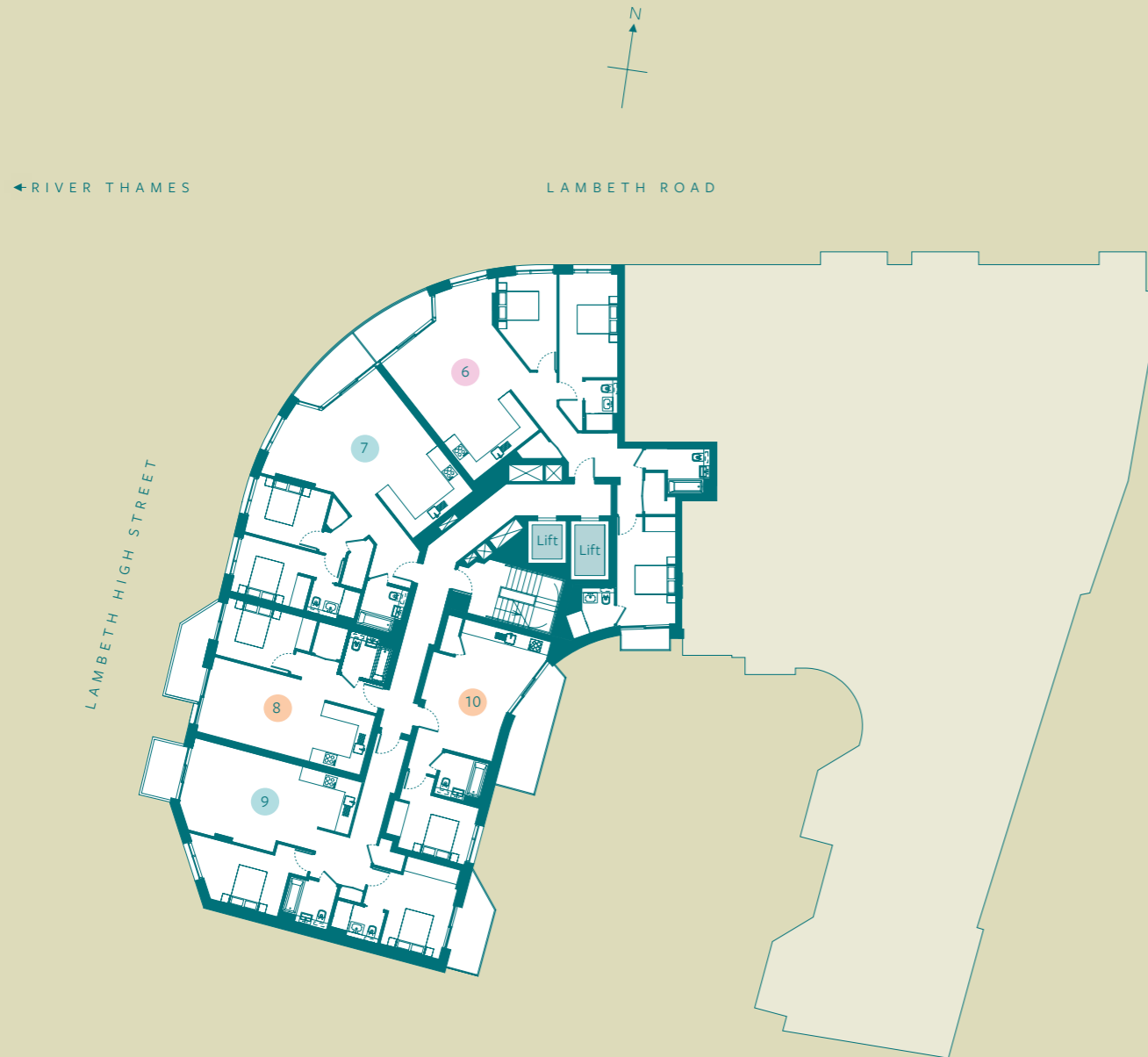
LAMBETH ROAD

For terms and conditions please refer to page 72.

	1	2	3	4	5
TOTAL INTERNAL AREA	90 sq m 968.8 sq ft	83 sq m 893.4 sq ft	50 sq m 538.2 sq ft	84 sq m 904.2 sq ft	44 sq m 473.6 sq ft
TOTAL EXTERNAL AREA	5 sq m 53.8 sq ft	5 sq m 53.8 sq ft	5.5 sq m 59.2 sq ft	10 sq m 107.6 sq ft	5 sq m 53.8 sq ft
LIVING/DINING	5.62m x 5.16m 18' 5" x 16' 11"	7.19m x 5.55m 23' 7" x 18' 3"	5.47m x 3.55m 17' 11" x 11' 8"	5.16m x 4.21m 16' 11" x 13' 10"	4.71m x 4.21m 15' 5" x 13' 10"
KITCHEN	3.86m x 2.25m 12' 8" x 7' 5"	3.56m x 2.66m 11' 8" x 8' 9"	2.82m x 2.40m 9' 3" x 7' 12"	2.83m x 2.50m 9' 3" x 8' 2"	4.11m x 1.80m 13' 6" x 5' 11"
MASTER BEDROOM	4.85m x 2.70m 15' 11" x 8' 10"	4.85m x 2.70m 15' 11" x 8' 10"	4.29m x 2.70m 14' 1" x 8' 10"	4.24m x 4.10m 13' 11" x 13' 5"	3.92m x 3.53m 12' 10" x 11' 7"
BEDROOM 2	4.47m x 2.70m 14' 8" x 8' 10"	3.50m x 2.70m 11' 6" x 8' 10"	-	5.58m x 3.28m 18' 4" x 10' 9"	-
BATHROOM	2.07m x 1.95m 6' 9" x 6' 5"	2.08m x 1.95m 6' 10" x 6' 5"	2.08m x 1.95m 6' 10" x 6' 5"	2.20m x 2.01m 7' 3" x 6' 7"	2.08m x 1.95m 6' 10" x 6' 5"
EN SUITE	2.31m x 1.45m 7' 7" x 4' 9"	2.22m x 1.46m 7' 3" x 4' 9"	-	2.27m x 1.46m 7' 5" x 4' 9"	-
MAIN TERRACE/BALCONY	3.88m x 1.72m 12' 9" x 5' 8"	3.91m x 1.73m 12' 10" x 5' 8"	4.68m x 1.58m 15' 4" x 5' 2"	2.54m x 1.58m 8' 4" x 5' 2"	3.60m x 1.89m 11' 10" x 6' 2"
MASTER BEDROOM TERRACE/BALCONY	-	-	-	4.14m x 2.09m 13' 7" x 6' 10"	-

SECOND FLOOR

○ One bedroom apartment ○ Two bedroom apartment ○ Three bedroom apartment

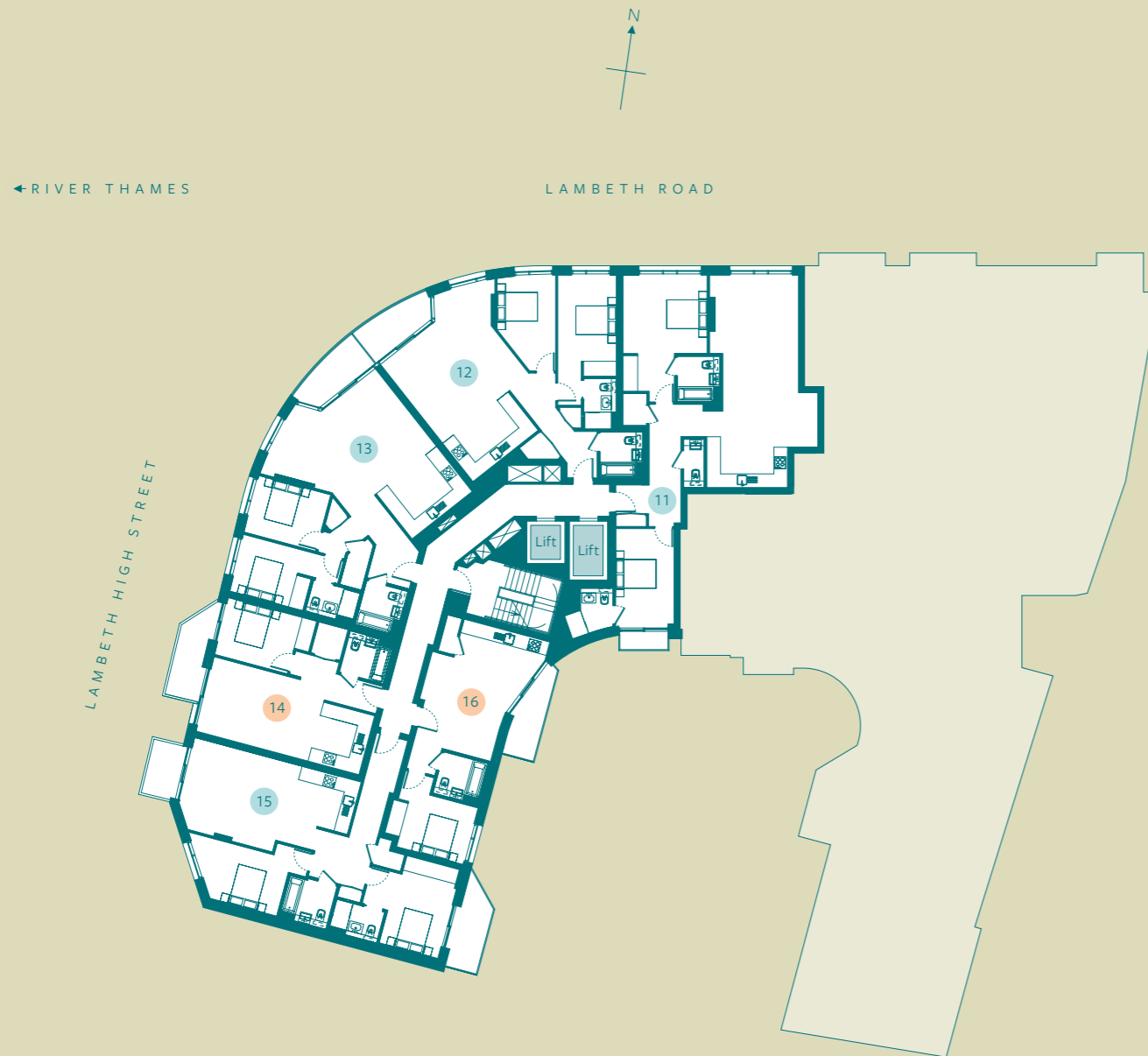


	6	7	8	9	10
TOTAL INTERNAL AREA	112 sq m 1,205.6 sq ft	83 sq m 893.4 sq ft	50 sq m 538.2 sq ft	84 sq m 904.2 sq ft	44 sq m 473.6 sq ft
TOTAL EXTERNAL AREA	7 sq m 75.3 sq ft	5 sq m 53.8 sq ft	5.5 sq m 59.2 sq ft	9 sq m 96.9 sq ft	9 sq m 96.9 sq ft
LIVING/ DINING	5.62m x 5.16m 18' 5" x 16' 11"	7.19m x 5.55m 23' 7" x 18' 3"	5.47m x 3.55m 17' 11" x 11' 8"	5.16m x 4.21m 16' 11" x 13' 10"	4.70m x 4.24m 15' 5" x 13' 11"
KITCHEN	3.86m x 2.20m 12' 8" x 7' 3"	3.56m x 2.66m 11' 8" x 8' 9"	2.82m x 2.43m 9' 3" x 7' 12"	2.83m x 2.50m 9' 3" x 8' 2"	4.11m x 1.80m 13' 6" x 5' 11"
MASTER BEDROOM	4.85m x 2.70m 15' 11" x 8' 10"	4.85m x 2.70m 15' 11" x 8' 10"	4.29m x 2.70m 14' 1" x 8' 10"	4.25m x 4.10m 13' 11" x 13' 5"	3.92m x 3.53m 12' 10" x 11' 7"
BEDROOM 2	7.34m x 2.70m 24' 1" x 8' 10"	3.50m x 2.70m 11' 6" x 8' 10"	-	5.57m x 3.28m 18' 3" x 10' 9"	-
BEDROOM 3	4.47m x 2.70m 14' 8" x 8' 10"	-	-	-	-
BATHROOM	2.98m x 2.08m 9' 9" x 6' 10"	2.08m x 1.95m 6' 10" x 6' 5"	2.08m x 1.95m 6' 10" x 6' 5"	2.20m x 2.04m 7' 3" x 6' 8"	2.08m x 1.95m 6' 10" x 6' 5"
EN SUITE	2.19m x 1.95m 7' 2" x 6' 5"	2.22m x 1.46m 7' 3" x 4' 9"	-	2.27m x 1.46m 7' 5" x 4' 9"	-
EN SUITE 2	2.31m x 1.46m 7' 7" x 4' 9"	-	-	-	-
MAIN TERRACE/ BALCONY	3.88m x 1.72m 12' 9" x 5' 8"	3.91m x 1.73m 12' 10" x 5' 8"	4.68m x 1.58m 15' 4" x 5' 2"	2.54m x 1.58m 8' 4" x 5' 2"	6.01m x 1.90m 19' 9" x 6' 3"
MASTER BEDROOM TERRACE/BALCONY	2.21m x 0.93m 7' 3" x 3' 1"	-	-	4.42m x 1.68m 14' 6" x 5' 6"	-

For terms and conditions please refer to page 72.

THIRD FLOOR

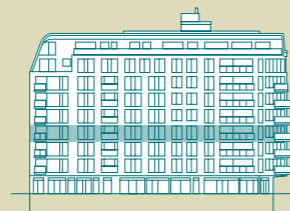
○ One bedroom apartment ○ Two bedroom apartment ○ Three bedroom apartment



← RIVER THAMES

LAMBETH ROAD

LAMBETH HIGH STREET

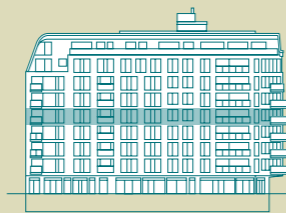
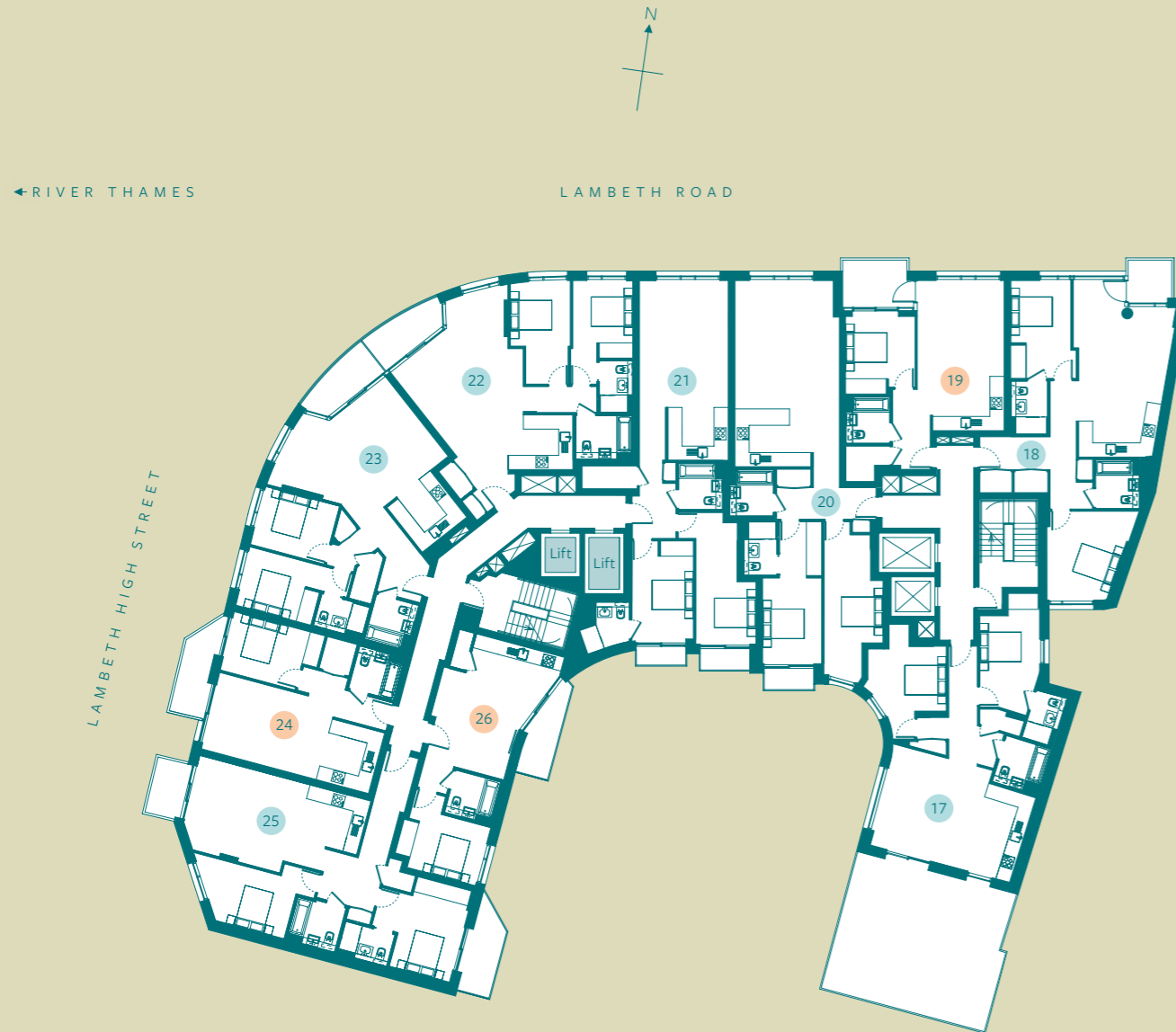


LAMBETH ROAD

For terms and conditions please refer to page 72.

	11	12	13	14	15	16
TOTAL INTERNAL AREA	101 sq m 1,087.2 sq ft	82 sq m 882.6 sq ft	83 sq m 893.4 sq ft	50 sq m 538.2 sq ft	84 sq m 904.2 sq ft	44 sq m 473.6 sq ft
TOTAL EXTERNAL AREA	2 sq m 21.5 sq ft	5 sq m 53.8 sq ft	5 sq m 53.8 sq ft	5.5 sq m 59.2 sq ft	9 sq m 96.9 sq ft	5 sq m 53.8 sq ft
LIVING/DINING	7.59m x 4.42m 24' 11" x 14' 6"	5.63m x 5.16m 18' 6" x 16' 11"	7.19m x 5.55m 23' 7" x 18' 3"	5.47m x 3.55m 17' 11" x 11' 8"	5.16m x 4.21m 16' 11" x 13' 10"	4.71m x 4.24m 15' 5" x 13' 11"
KITCHEN	3.76m x 2.35m 12' 4" x 7' 9"	3.86m x 2.25m 12' 8" x 7' 5"	3.56m x 2.66m 11' 8" x 8' 9"	2.82m x 2.43m 9' 3" x 7' 12"	2.83m x 2.50m 9' 3" x 8' 2"	4.11m x 1.80m 13' 6" x 5' 11"
MASTER BEDROOM	5.97m x 3.91m 19' 7" x 12' 10"	4.76m x 2.70m 15' 7" x 8' 10"	4.85m x 2.70m 15' 11" x 8' 10"	4.29m x 2.70m 14' 1" x 8' 10"	4.25m x 4.10m 13' 11" x 13' 5"	3.92m x 3.51m 12' 10" x 11' 6"
BEDROOM 2	4.62m x 2.70m 15' 2" x 8' 10"	4.47m x 2.70m 14' 8" x 8' 10"	3.50m x 2.70m 11' 6" x 8' 10"	-	5.57m x 3.28m 18' 3" x 10' 9"	-
BATHROOM	-	2.08m x 1.95m 6' 10" x 6' 5"	2.08m x 1.95m 6' 10" x 6' 5"	2.08m x 1.95m 6' 10" x 6' 5"	2.20m x 2.04m 7' 3" x 6' 8"	2.08m x 1.95m 6' 10" x 6' 5"
EN SUITE	2.08m x 1.95m 6' 10" x 6' 5"	2.31m x 1.46m 7' 7" x 4' 9"	2.22m x 1.46m 7' 3" x 4' 9"	-	2.27m x 1.46m 7' 5" x 4' 9"	-
EN SUITE 2	2.17m x 1.94m 7' 1" x 6' 4"	-	-	-	-	-
MAIN TERRACE/BALCONY	2.21m x 0.80m 7' 3" x 2' 7"	3.88m x 1.72m 12' 9" x 5' 8"	3.91m x 1.73m 12' 10" x 5' 8"	4.68m x 1.58m 15' 4" x 5' 2"	2.54m x 1.58m 8' 4" x 5' 2"	4.51m x 1.53m 14' 10" x 5'
MASTER BEDROOM TERRACE/BALCONY	-	-	-	-	4.42m x 1.68m 14' 6" x 5' 6"	-

FOURTH FLOOR



LAMBETH ROAD

○ One bedroom apartment

○ Two bedroom apartment

○ Three bedroom apartment

	17	18	19	20	21
TOTAL INTERNAL AREA	80 sq m 861.1 sq ft	85 sq m 914.9 sq ft	52 sq m 559.7 sq ft	91 sq m 979.5 sq ft	81 sq m 871.9 sq ft
TOTAL EXTERNAL AREA	38 sq m 409 sq ft	3 sq m 32.3 sq ft	6 sq m 64.6 sq ft	2 sq m 21.5 sq ft	4 sq m 43.1 sq ft
LIVING/ DINING	4.75m x 4.56m 15' 7" x 14' 12"	5.60m x 4.62m 18' 4" x 15' 2"	4.41m x 3.92m 14' 6" x 12' 10"	5.87m x 4.72m 19' 3" x 15' 6"	5.81m x 4.01m 19' 1" x 13' 2"
KITCHEN	4.11m x 2.21m 13' 6" x 7' 3"	4.99m x 2.47m 16' 4" x 8' 1"	3.92m x 2.41m 12' 10" x 7' 11"	4.72m x 2.60m 15' 6" x 8' 6"	2.71m x 2.37m 8' 11" x 7' 9"
MASTER BEDROOM	5.32m x 2.69m 17' 5" x 8' 10"	4.48m x 2.95m 14' 8" x 9' 8"	3.75m x 3.13m 12' 4" x 10' 3"	6.50m x 2.65m 21' 4" x 8' 8"	4.62m x 2.77m 15' 2" x 9' 1"
BEDROOM 2	5.20m x 3.76m 17' 1" x 12' 4"	4.06m x 3.86m 13' 4" x 12' 8"	-	7.24m x 2.65m 23' 9" x 8' 8"	6.02m x 2.70m 19' 9" x 8' 10"
BATHROOM	2.15m x 2.08m 7' 1" x 6' 10"	2.17m x 1.95m 7' 1" x 6' 5"	2.08m x 1.95m 6' 10" x 6' 5"	2.05m x 1.95m 6' 9" x 6' 5"	2.08m x 1.95m 6' 10" x 6' 5"
EN SUITE	2.22m x 1.41m 7' 3" x 4' 8"	2.38m x 1.62m 7' 10" x 5' 4"	-	2.39m x 1.46m 7' 10" x 4' 9"	2.18m x 2.15m 7' 2" x 7' 1"
MAIN TERRACE/ BALCONY	6.84m x 6.04m 22' 5" x 19' 10"	1.95m x 1.91m 6' 5" x 6' 3"	2.89m x 2.21m 9' 6" x 7' 3"	2.21m x 0.91m 7' 3" x 2' 12"	2.21m x 0.81m 7' 3" x 2' 8"
BEDROOM 2 TERRACE/BALCONY	-	-	-	-	2.21m x 0.92m 7' 3" x 3' 0"
	22	23	24	25	26
TOTAL INTERNAL AREA	82 sq m 882.6 sq ft	81 sq m 871.9 sq ft	50 sq m 538.2 sq ft	84 sq m 904.2 sq ft	44 sq m 473.6 sq ft
TOTAL EXTERNAL AREA	5 sq m 53.8 sq ft	5 sq m 53.8 sq ft	5.5 sq m 59.2 sq ft	9 sq m 96.9 sq ft	5 sq m 53.8 sq ft
LIVING/ DINING	6.03m x 5.89m 19' 9" x 19' 4"	7.26m x 5.60m 23' 10" x 18' 4"	5.47m x 3.55m 17' 11" x 11' 8"	5.16m x 4.21m 16' 11" x 13' 10"	4.71m x 4.24m 15' 5" x 13' 11"
KITCHEN	5.24m x 2.45m 17' 2" x 8'	2.66m x 2.55m 8' 9" x 8' 4"	2.82m x 2.43m 9' 3" x 7' 12"	2.83m x 2.50m 9' 3" x 8' 2"	4.11m x 1.80m 13' 6" x 5' 11"
MASTER BEDROOM	3.55m x 2.70m 11' 8" x 8' 10"	4.85m x 2.70m 15' 11" x 8' 10"	4.29m x 2.70m 14' 1" x 8' 10"	4.25m x 4.10m 13' 11" x 13' 5"	3.92m x 3.51m 12' 10" x 11' 6"
BEDROOM 2	4.70m x 2.70m 15' 5" x 8' 10"	3.50m x 2.70m 11' 6" x 8' 10"	-	5.57m x 3.28m 18' 3" x 10' 9"	-
BATHROOM	2.53m x 1.95m 8' 4" x 6' 5"	2.08m x 1.95m 6' 10" x 6' 5"	2.08m x 1.95m 6' 10" x 6' 5"	2.20m x 2.04m 7' 3" x 6' 8"	2.08m x 1.95m 6' 10" x 6' 5"
EN SUITE	2.33m x 1.47m 7' 8" x 4' 10"	2.22m x 1.46m 7' 3" x 4' 9"	-	2.27m x 1.46m 7' 5" x 4' 9"	-
MAIN TERRACE/ BALCONY	3.86m x 1.60m 12' 8" x 5' 3"	3.86m x 1.72m 12' 8" x 5' 8"	4.68m x 1.58m 15' 4" x 5' 2"	2.54m x 1.58m 8' 4" x 5' 2"	4.51m x 1.53m 14' 10" x 5'
MASTER BEDROOM TERRACE/BALCONY	-	-	-	4.42m x 1.68m 14' 6" x 5' 6"	-

For terms and conditions please refer to page 72.

FIFTH FLOOR

○ One bedroom apartment ○ Two bedroom apartment ○ Three bedroom apartment



LAMBETH ROAD

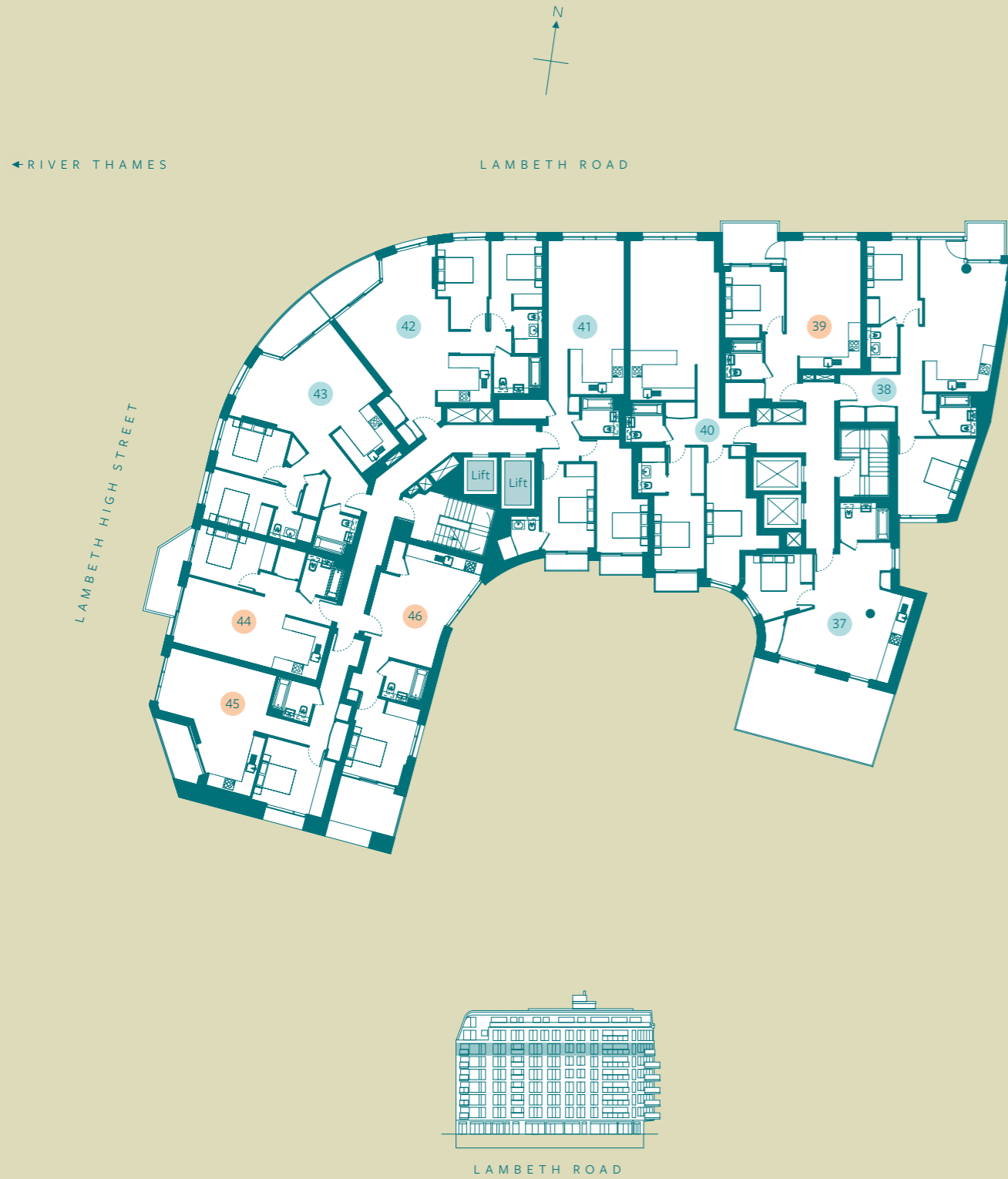
← RIVER THAMES

LAMBETH ROAD

	27	28	29	30	31
TOTAL INTERNAL AREA	80 sq m 861.1 sq ft	85 sq m 914.9 sq ft	52 sq m 559.7 sq ft	91 sq m 979.5 sq ft	81 sq m 871.9 sq ft
TOTAL EXTERNAL AREA	6 sq m 64.6 sq ft	3 sq m 32.3 sq ft	6 sq m 64.6 sq ft	2 sq m 21.5 sq ft	4 sq m 43.1 sq ft
LIVING/ DINING	4.71m x 4.56m 15' 5" x 14' 12"	5.56m x 4.62m 18' 3" x 15' 2"	4.41m x 3.92m 14' 6" x 12' 10"	5.87m x 4.72m 19' 3" x 15' 6"	5.81m x 4.01m 19' 1" x 13' 2"
KITCHEN	4.10m x 2.21m 13' 5" x 7' 3"	4.99m x 2.47m 16' 4" x 8' 1"	3.92m x 2.41m 12' 10" x 7' 11"	4.72m x 2.60m 15' 6" x 8' 6"	2.71m x 2.37m 8' 11" x 7' 9"
MASTER BEDROOM	5.32m x 2.69m 17' 5" x 8' 10"	4.48m x 2.95m 14' 8" x 9' 8"	3.75m x 3.13m 12' 4" x 10' 3"	6.50m x 2.65m 21' 4" x 8' 8"	4.62m x 2.77m 15' 2" x 9' 1"
BEDROOM 2	5.18m x 3.76m 16' 12" x 12' 4"	4.06m x 4m 13' 4" x 13' 1"	-	7.24m x 2.65m 23' 9" x 8' 8"	6.02m x 2.70m 19' 9" x 8' 10"
BATHROOM	2.15m x 2.08m 7' 1" x 6' 10"	2.17m x 1.95m 7' 1" x 6' 5"	2.08m x 1.95m 6' 10" x 6' 5"	2.05m x 1.95m 6' 9" x 6' 5"	2.08m x 1.95m 6' 10" x 6' 5"
EN SUITE	2.22m x 1.41m 7' 3" x 4' 8"	2.38m x 1.62m 7' 10" x 5' 4"	-	2.39m x 1.46m 7' 10" x 4' 9"	2.18m x 2.15m 7' 2" x 7' 1"
MAIN TERRACE/ BALCONY	3.35m x 2.13m 10' 12" x 6' 12"	1.95m x 1.91m 6' 5" x 6' 3"	2.89m x 2.21m 9' 6" x 7' 3"	-	-
MASTER BEDROOM TERRACE/BALCONY	-	-	-	2.21m x 0.91m 7' 3" x 2' 12"	2.21m x 0.81m 7' 3" x 2' 8"
BEDROOM 2 TERRACE/BALCONY	-	-	-	-	2.21m x 0.92m 7' 3" x 3' 0"
	32	33	34	35	36
TOTAL INTERNAL AREA	82 sq m 882.6 sq ft	81 sq m 871.9 sq ft	50 sq m 538.2 sq ft	84 sq m 904.2 sq ft	44 sq m 473.6 sq ft
TOTAL EXTERNAL AREA	5 sq m 53.8 sq ft	5 sq m 53.8 sq ft	5.5 sq m 59.2 sq ft	9 sq m 96.9 sq ft	5 sq m 53.8 sq ft
LIVING/ DINING	6.03m x 5.89m 19' 9" x 19' 4"	7.26m x 5.60m 23' 10" x 18' 4"	5.47m x 3.55m 17' 11" x 11' 8"	5.16m x 4.21m 16' 11" x 13' 10"	4.71m x 4.24m 15' 5" x 13' 11"
KITCHEN	5.24m x 2.45m 17' 2" x 8' 0"	2.66m x 2.55m 8' 9" x 8' 4"	2.82m x 2.43m 9' 3" x 7' 12"	2.83m x 2.50m 9' 3" x 8' 2"	4.11m x 1.80m 13' 6" x 5' 11"
MASTER BEDROOM	3.55m x 2.70m 11' 8" x 8' 10"	4.85m x 2.70m 15' 11" x 8' 10"	4.29m x 2.70m 14' 1" x 8' 10"	4.25m x 4.10m 13' 11" x 13' 5"	3.92m x 3.51m 12' 10" x 11' 6"
BEDROOM 2	4.70m x 2.70m 15' 5" x 8' 10"	3.50m x 2.70m 11' 6" x 8' 10"	-	5.57m x 3.28m 18' 3" x 10' 9"	-
BATHROOM	2.53m x 1.95m 8' 4" x 6' 5"	2.08m x 1.95m 6' 10" x 6' 5"	2.08m x 1.95m 6' 10" x 6' 5"	2.20m x 2.04m 7' 3" x 6' 8"	2.08m x 1.95m 6' 10" x 6' 5"
EN SUITE	2.33m x 1.47m 7' 8" x 4' 10"	2.22m x 1.46m 7' 3" x 4' 9"	-	2.27m x 1.46m 7' 5" x 4' 9"	-
MAIN TERRACE/ BALCONY	3.86m x 1.60m 12' 8" x 5' 3"	3.86m x 1.72m 12' 8" x 5' 8"	4.68m x 1.58m 15' 4" x 5' 2"	2.54m x 1.58m 8' 4" x 5' 2"	4.51m x 1.53m 14' 10" x 5' 0"
MASTER BEDROOM TERRACE/BALCONY	-	-	-	4.42m x 1.68m 14' 6" x 5' 6"	-

For terms and conditions please refer to page 72.

SIXTH FLOOR



One bedroom apartment

Two bedroom apartment

Three bedroom apartment

37

38

39

40

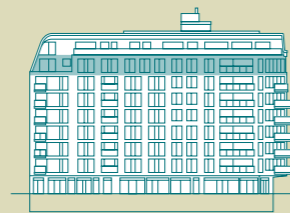
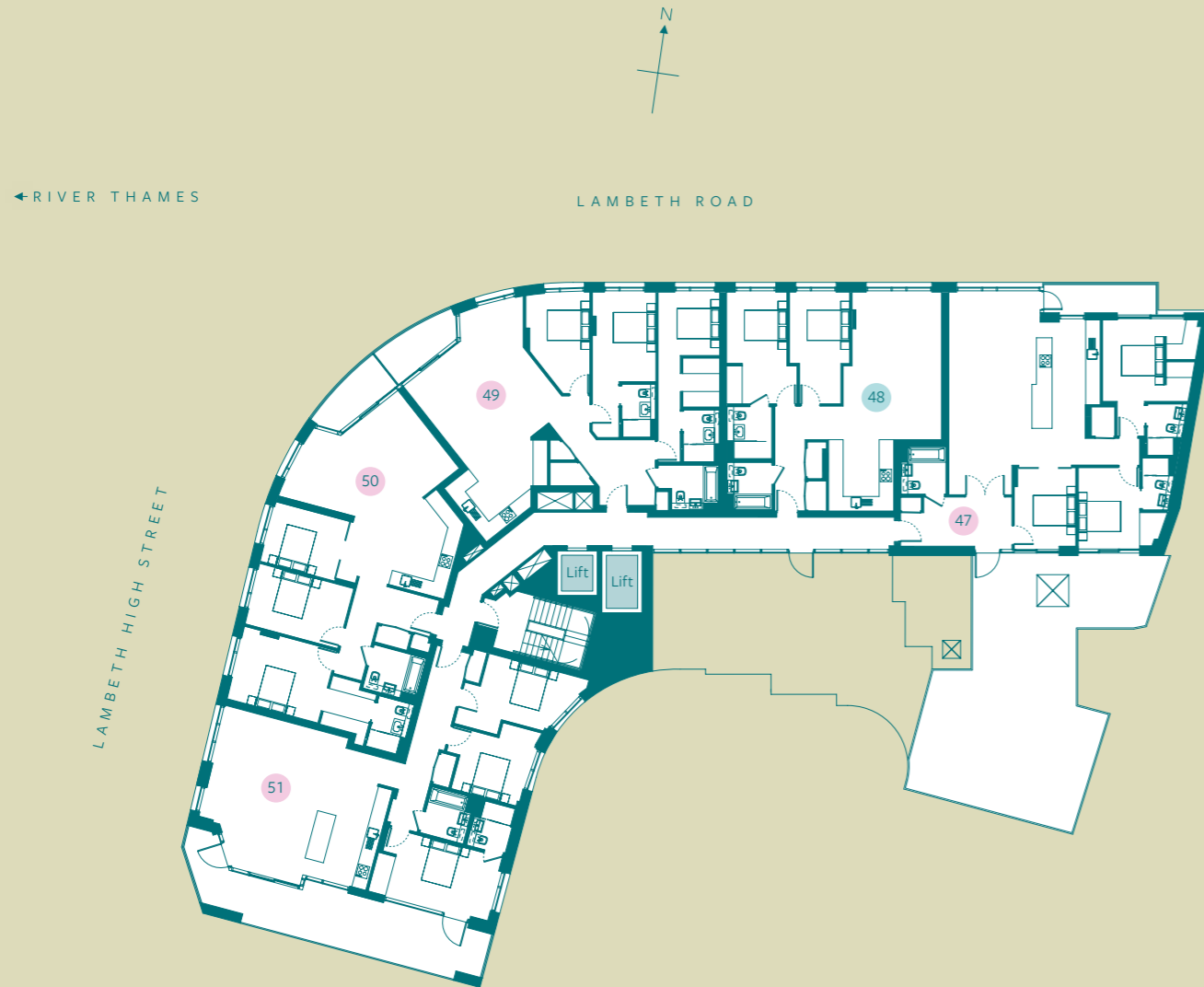
41

	37	38	39	40	41
TOTAL INTERNAL AREA	54 sq m 581.3 sq ft	85 sq m 914.9 sq ft	52 sq m 559.7 sq ft	91 sq m 979.5 sq ft	81 sq m 871.9 sq ft
TOTAL EXTERNAL AREA	22 sq m 236.8 sq ft	3 sq m 32.3 sq ft	6 sq m 64.6 sq ft	2 sq m 21.5 sq ft	4 sq m 43.1 sq ft
LIVING/ DINING	7.15m x 4.33m 23' 5" x 14' 2"	5.56m x 4.62m 18' 3" x 15' 2"	4.41m x 3.92m 14' 6" x 12' 10"	5.87m x 4.72m 19' 3" x 15' 6"	5.81m x 4.01m 19' 1" x 13' 2"
KITCHEN	4.77m x 1.74m 15' 8" x 5' 9"	4.99m x 2.47m 16' 4" x 8' 1"	3.92m x 2.41m 12' 10" x 7' 11"	3.42m x 2.60m 11' 3" x 8' 6"	2.71m x 2.37m 8' 11" x 7' 9"
MASTER BEDROOM	3.56m x 3.51m 11' 8" x 11' 6"	4.48m x 2.95m 14' 8" x 9' 8"	3.75m x 3.13m 12' 4" x 10' 3"	6.50m x 2.65m 21' 4" x 8' 8"	4.62m x 2.77m 15' 2" x 9' 1"
BEDROOM 2	-	4.06m x 4m 13' 4" x 13' 1"	-	7.24m x 3.85m 23' 9" x 12' 8"	6.02m x 2.70m 19' 9" x 8' 10"
BATHROOM	2.57m x 1.95m 8' 5" x 6' 5"	2.17m x 1.95m 7' 1" x 6' 5"	2.08m x 1.95m 6' 10" x 6' 5"	2.08m x 1.95m 6' 10" x 6' 5"	2.08m x 1.95m 6' 10" x 6' 5"
EN SUITE	-	2.38m x 1.62m 7' 10" x 5' 4"	-	2.39m x 1.46m 7' 10" x 4' 9"	2.18m x 2.15m 7' 2" x 7' 1"
MAIN TERRACE/ BALCONY	6.82m x 3.57m 22' 5" x 11' 9"	1.95m x 1.91m 6' 5" x 6' 3"	2.89m x 2.21m 9' 6" x 7' 3"	-	-
MASTER BEDROOM TERRACE/ BALCONY	-	-	-	2.21m x 0.93m 7' 3" x 3' 1"	2.21m x 0.81m 7' 3" x 2' 8"
BEDROOM 2 TERRACE/ BALCONY	-	-	-	-	2.21m x 0.92m 7' 3" x 3' 0"
	42	43	44	45	46
TOTAL INTERNAL AREA	82 sq m 882.6 sq ft	81 sq m 871.9 sq ft	50 sq m 538.2 sq ft	58 sq m 624.3 sq ft	48 sq m 516.7 sq ft
TOTAL EXTERNAL AREA	5 sq m 53.8 sq ft	5 sq m 53.8 sq ft	5.5 sq m 59.2 sq ft	4.5 sq m 48.4 sq ft	7 sq m 75.3 sq ft
LIVING/ DINING	6.03m x 5.89m 19' 9" x 19' 4"	7.26m x 5.60m 23' 10" x 18' 4"	5.51m x 3.55m 18' 1" x 11' 8"	5.78m x 3.34m 18' 12" x 10' 11"	4.74m x 4.24m 15' 7" x 13' 11"
KITCHEN	5.24m x 2.45m 17' 2" x 8'	2.66m x 2.55m 8' 9" x 8' 4"	2.82m x 2.43m 9' 3" x 7' 12"	3.83m x 3.17m 12' 7" x 10' 5"	4.11m x 1.80m 13' 6" x 5' 11"
MASTER BEDROOM	3.55m x 2.70m 11' 8" x 8' 10"	4.85m x 2.70m 15' 11" x 8' 10"	4.30m x 2.70m 14' 1" x 8' 10"	3.81m x 3.45m 12' 6" x 11' 4"	4.25m x 3.30m 13' 11" x 10' 10"
BEDROOM 2	4.70m x 2.70m 15' 5" x 8' 10"	3.50m x 2.70m 11' 6" x 8' 10"	-	-	-
BATHROOM	2.53m x 1.95m 8' 4" x 6' 5"	2.08m x 1.95m 6' 10" x 6' 5"	2.08m x 1.95m 6' 10" x 6' 5"	2.08m x 1.95m 6' 10" x 6' 5"	2.08m x 1.95m 6' 10" x 6' 5"
EN SUITE	2.33m x 1.47m 7' 8" x 4' 10"	2.22m x 1.46m 7' 3" x 4' 9"	-	-	-
MAIN TERRACE/ BALCONY	3.86m x 1.60m 12' 8" x 5' 3"	3.86m x 1.72m 12' 8" x 5' 8"	4.68m x 1.58m 15' 4" x 5' 2"	3.37m x 1.45m 11' 1" x 4' 9"	3.47m x 2.43m 11' 5" x 7' 12"

For terms and conditions please refer to page 72.

SEVENTH FLOOR

○ One bedroom apartment ○ Two bedroom apartment ○ Three bedroom apartment



LAMBETH ROAD

	47	48	49	50	51
TOTAL INTERNAL AREA	118 sq m 1,270.2 sq ft	86 sq m 925.7 sq ft	116 sq m 1,248.6 sq ft	109 sq m 1,173.3 sq ft	116 sq m 1,248.6 sq ft
TOTAL EXTERNAL AREA	85 sq m 914.9 sq ft	-	5 sq m 53.8 sq ft	5 sq m 53.8 sq ft	30 sq m 322.9 sq ft
LIVING/DINING	9.06m x 4.03m 29' 9" x 13' 3"	6.60m x 4.34m 21' 8" x 14' 3"	5.67m x 5.24m 18' 7" x 17' 2"	7.06m x 5.29m 23' 2" x 17' 4"	6.86m x 5.13m 22' 6" x 16' 10"
KITCHEN	6.49m x 3m 21' 4" x 9' 10"	3.15m x 2.86m 10' 4" x 9' 5"	4.41m x 3m 14' 6" x 9' 10"	4.88m x 4.04m 16' x 13' 3"	5.91m x 2.95m 19' 5" x 9' 8"
MASTER BEDROOM	5.20m x 4.30m 17' 1" x 14' 1"	5m x 3.10m 16' 5" x 10' 2"	5.19m x 2.70m 17' x 8' 10"	6.50m x 3.28m 21' 4" x 10' 9"	5.50m x 3m 18' 1" x 9' 10"
BEDROOM 2	3.88m x 3.59m 12' 9" x 11' 9"	5m x 2.65m 16' 5" x 8' 8"	4.01m x 2.79m 13' 2" x 9' 2"	4.34m x 2.73m 14' 3" x 8' 11"	4.56m x 3.38m 14' 12" x 11' 1"
BEDROOM 3	3.57m x 2.70m 11' 9" x 8' 10"	-	4.50m x 2.82m 14' 9" x 9' 3"	3.44m x 2.70m 11' 3" x 8' 10"	3.84m x 3.40m 12' 7" x 11' 2"
BATHROOM	2.05m x 1.95m 6' 9" x 6' 5"	2.08m x 1.95m 6' 10" x 6' 5"	2.67m x 1.95m 8' 9" x 6' 5"	2.36m x 1.95m 7' 9" x 6' 5"	2.08m x 1.94m 6' 10" x 6' 4"
EN SUITE	2.24m x 1.61m 7' 4" x 5' 3"	2.28m x 1.95m 7' 6" x 6' 5"	2.29m x 1.56m 7' 6" x 5' 1"	2.28m x 1.63m 7' 6" x 5' 4"	2.07m x 1.71m 6' 9" x 5' 7"
EN SUITE 2	2.27m x 1.34m 7' 5" x 4' 5"	-	2.31m x 1.48m 7' 7" x 4' 10"	-	-
MAIN TERRACE/BALCONY	12.15m x 8.61m 39' 10" x 28' 3"	-	3.86m x 1.60m 12' 8" x 5' 3"	3.86m x 1.72m 12' 8" x 5' 8"	13.40m x 2.55m 43' 12" x 8' 4"
LIVING/BEDROOM TERRACE	4.97m x 1.21m 16' 4" x 3' 12"	-	-	-	-

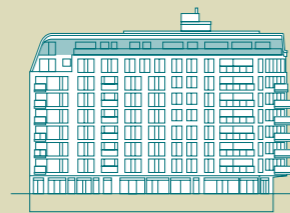
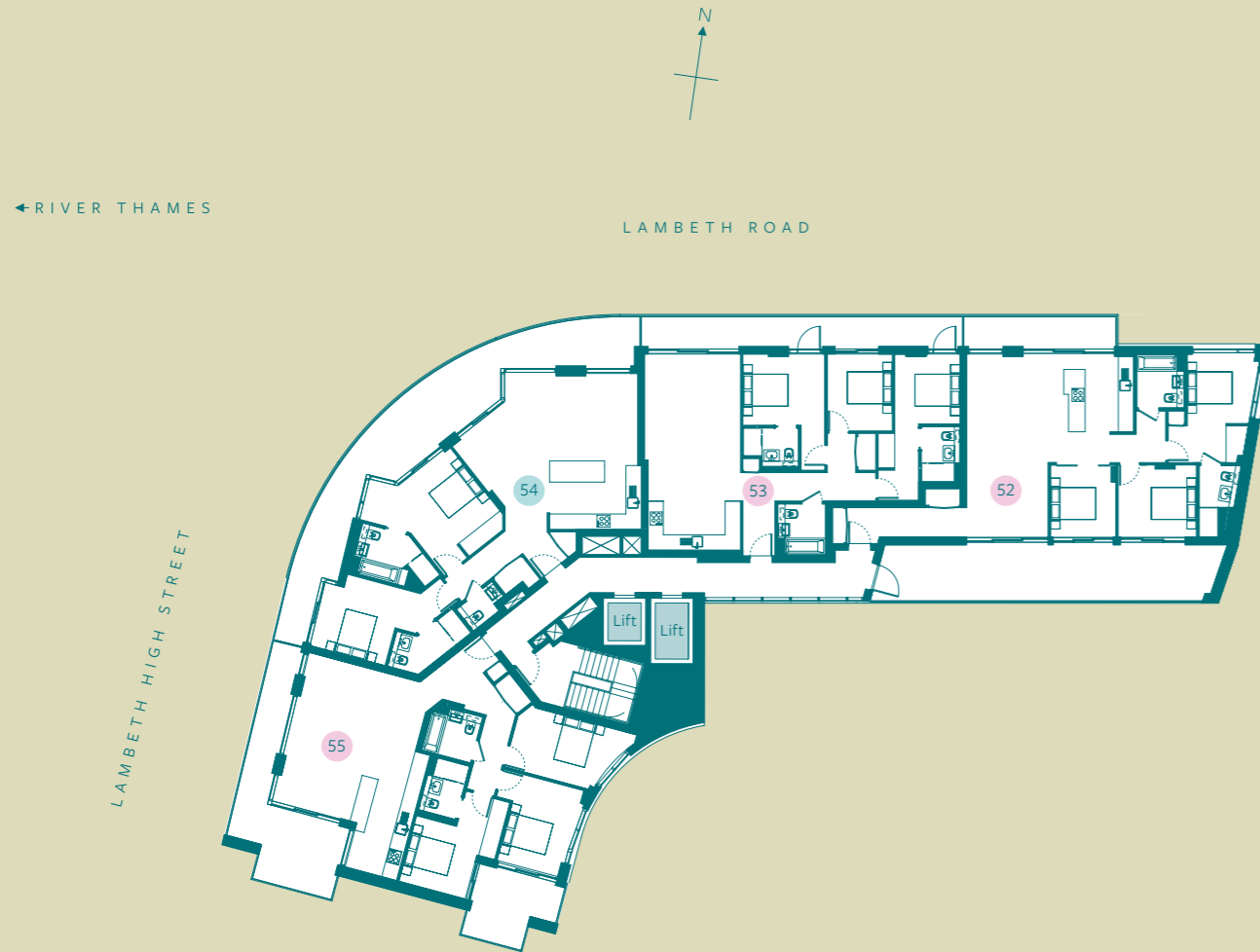
For terms and conditions please refer to page 72.

PALACE SUITES – EIGHTH FLOOR

○ One bedroom apartment

○ Two bedroom apartment

○ Three bedroom apartment



LAMBETH ROAD

	52	53	54	55
TOTAL INTERNAL AREA	96 sq m 1,033.3 sq ft	96 sq m 1,033.3 sq ft	97 sq m 1,044.1 sq ft	97 sq m 1,044.1 sq ft
TOTAL EXTERNAL AREA	40 sq m 430.6 sq ft	16 sq m 172.2 sq ft	35 sq m 376.7 sq ft	28 sq m 301.4 sq ft
LIVING/DINING	7.77m x 4.05m 25' 6" x 13' 3"	6.19m x 4m 20' 4" x 13' 1"	7.79m x 3.69m 25' 7" x 12' 1"	6.42m x 5.24m 21' 1" x 17' 2"
KITCHEN	4.59m x 2.90m 15' 1" x 9' 6"	3.86m x 2.03m 12' 8" x 6' 8"	6.26m x 2.85m 20' 6" x 9' 4"	5.43m x 2.50m 17' 10" x 8' 2"
MASTER BEDROOM	4.59m x 3.31m 15' 1" x 10' 10"	4.86m x 2.71m 15' 11" x 8' 11"	4.93m x 4.77m 16' 2" x 15' 8"	4.37m x 3.62m 14' 4" x 11' 11"
BEDROOM 2	3.25m x 3.03m 10' 8" x 9' 11"	4.91m x 3.41m 16' 1" x 11' 2"	4.96m x 3.28m 16' 3" x 10' 9"	3.82m x 3.60m 12' 6" x 11' 10"
BEDROOM 3	3.03m x 2.70m 9' 11" x 8' 10"	3.25m x 2.70m 10' 8" x 8' 10"	-	4.86m x 2.70m 15' 11" x 8' 10"
BATHROOM	2.19m x 1.95m 7' 2" x 6' 5"	2.09m x 1.95m 6' 10" x 6' 5"	-	2.08m x 1.95m 6' 10" x 6' 5"
EN SUITE	2.97m x 1.70m 9' 9" x 5' 7"	2.28m x 1.56m 7' 6" x 5' 1"	3.65m x 2.07m 11' 12" x 6' 9"	2.28m x 1.56m 7' 6" x 5' 1"
EN SUITE 2	-	2.28m x 1.56m 7' 6" x 5' 1"	3.58m x 1.94m 11' 9" x 6' 4"	-
MAIN TERRACE/BALCONY	6.37m x 1.31m 20' 11" x 4' 4"	13.10m x 1.21m 42' 12" x 3' 12"	22.20m x 2.53m 72' 10" x 8' 4"	8.41m x 4.92m 27' 7" x 16' 2"
LIVING/BEDROOM TERRACE	14.35m x 2.43m 47' 1" x 7' 12"	-	-	-
MASTER BEDROOM TERRACE/BALCONY	-	-	-	3.70m x 3.11m 12' 2" x 10' 2"

For terms and conditions please refer to page 72.

A TIMELESS COLLECTION

CREATING SIGNATURE DEVELOPMENTS
IN CENTRAL LONDON

Taylor Wimpey Central London is part of Taylor Wimpey plc – one of the UK's largest residential developers and a FTSE 100 listed company.

We feel that being part of a recognised and respected company offers our customers stability and confidence in delivery, but at the same time our specialist Central London arm is dedicated to creating unique

developments suited to the Central London market where attention to detail and a unique service is key.

We believe this combination enables us to offer a personalised service to our varying range of customers all of whom have different requirements for where they want to call their own. We recognise everyone is different and seek to reflect this in our bespoke development portfolio

and create unique buildings where attention to detail is paramount.

We recognise that sometimes it is not easy to choose your perfect home or investment, but we aim to provide a dedicated customer service throughout the process to help you make that choice. Our aim is that you are delighted that you chose Taylor Wimpey Central London.

QUALITY ASSURED

A HOME BUILDER OF CHOICE

We know that buying a home is a significant financial and personal investment. We aim to make the whole process as simple and straightforward as possible.

The Taylor Wimpey Central London Customer Journey is a set of procedures designed to ensure all customers have the best possible experience, from reserving their home right through to aftercare once the

purchase is completed. We pride ourselves on providing our customers with a personalised professional service on all aspects of their purchase.

We constantly achieve a high ranking with the Home Builders Federation star ratings for customer satisfaction. All of our homes come with a two-year Taylor Wimpey Warranty and a ten-year Buildmark cover

from the National House Building Council. We are a customer-focused business with a firm commitment to build homes of the highest quality.

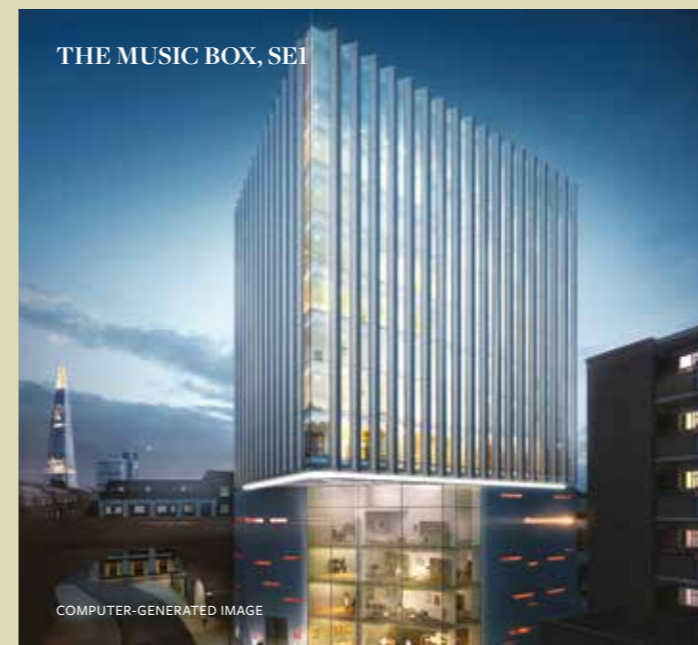


ST. DUNSTAN'S COURT, EC4



WESTMINSTER QUARTER, SW1

COMPUTER-GENERATED IMAGE



THE MUSIC BOX, SE1

COMPUTER-GENERATED IMAGE



PADDINGTON EXCHANGE, W2

COMPUTER-GENERATED IMAGE



PORTFOLIO

DUBAI, UAE OFFICE

Empire Heights
Podium Floor, Business Bay
PO BOX 124854
Tel +971 4 446 2000 Fax
+971 4 446 2099

JEDDAH, KSA OFFICE

Hasid Co. Building
PO Box 50405
Jeddah 21533, KSA
Tel +966 12 2067025
Fax +966 12 2067725

DLD Registration No. 660
DED Trade License No 574154

www.oryxworldportfolio.com

Floor plans and floor plates are intended to give a general indication of the proposed floor layout only and apartment layouts provide approximate measurements only. Dimensions are for guidance only and all measurements and areas may vary within a tolerance of 5%. Dimensions are not intended to be used for carpet sizes, appliance space or items of furniture. Total areas are provided as GIA under the RICS measuring practice.

Kitchen and bathroom layouts are indicative only and are subject to change. Furniture and landscaping is shown for illustrative purposes only. All images and dimensions are not intended to form part of any contract or warranty. All images used, including CGIs and view photography, are for illustrative purposes only. Individual features such as windows, brick and other materials' colours may vary, as may heating and electrical layouts.

The name Palace View is for marketing purposes and may not form part of the postal address.

Pollitt & Partners, 01/2016, v1